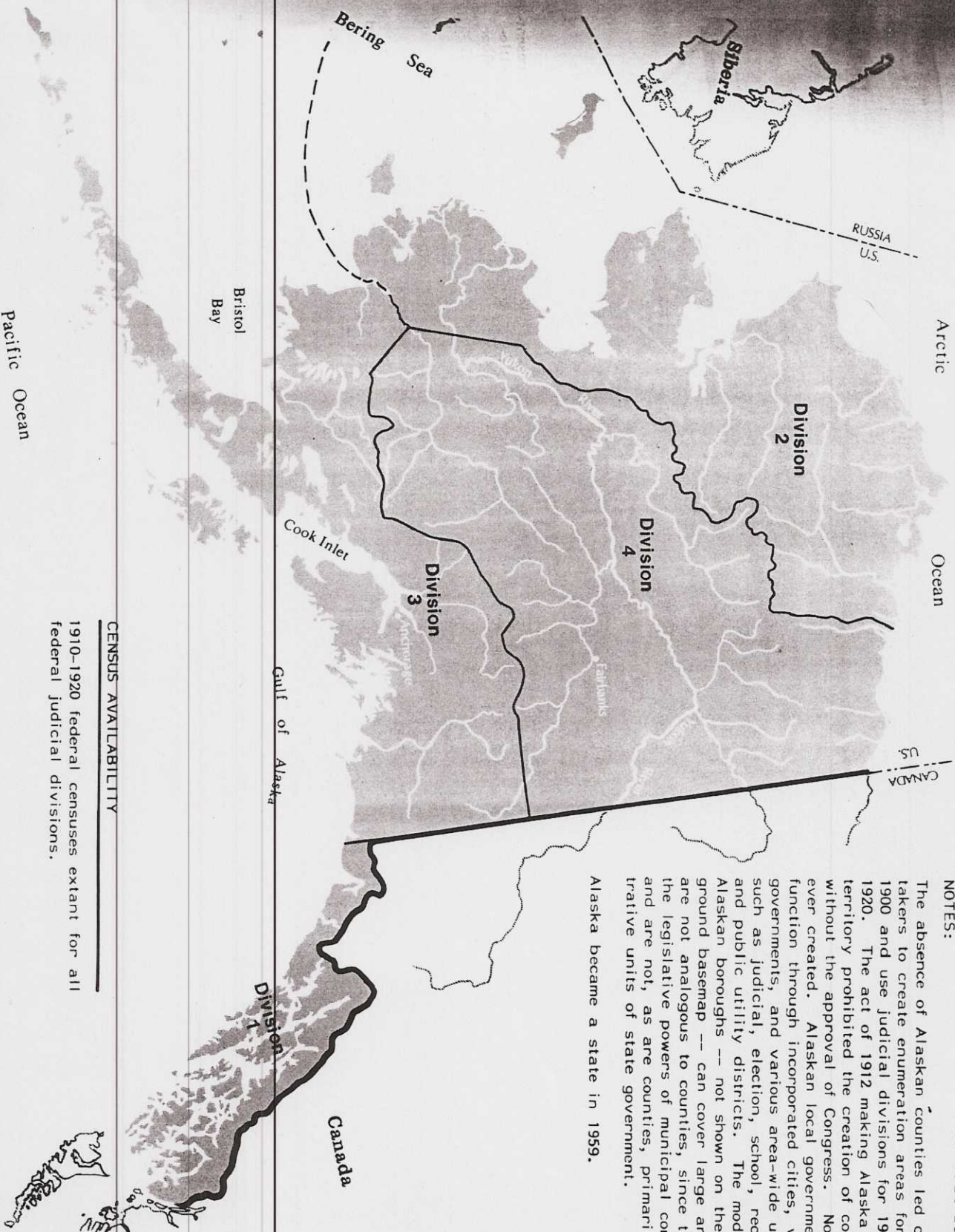


NOTES:

The absence of Alaskan counties led census takers to create enumeration areas for 1880-1900 and use judicial divisions for 1910 and 1920. The act of 1912 making Alaska a territory prohibited the creation of counties without the approval of Congress. None were ever created. Alaskan local governments function through incorporated cities, village governments, and various area-wide units such as judicial, election, school, recorder, and public utility districts. The modern Alaskan boroughs -- not shown on the background basemap -- can cover large areas but are not analogous to counties, since they have the legislative powers of municipal corporations and are not, as are counties, primarily administrative units of state government.

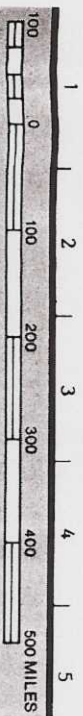
Alaska became a state in 1959.



CENSUS AVAILABILITY

1910-1920 federal censuses extant for all federal judicial divisions.

Pacific Ocean



BLACK = 1910-1920 BOUNDARIES

Alaska • 1910-1920