

---

# S F V G S BULLETIN

San Fernando Valley Genealogical Society

April 2009

DATE-TIME: Friday,  
April 17, 2009, 7:30 P.M.  
At the Chatsworth Chamber of Commerce room  
In the Chatsworth Train Station  
10038 Old Depot Plaza Road, Chatsworth, CA.

**Speaker: Tony Newhall**  
**Topic: Henry Mayo Newhall—Founder of the Town of Newhall**

Have you ever wondered how the towns of Newhall and Saugus got their names? Or about the man for whom the Henry Mayo hospital is named? The story will be told by his great-great-grandson, Tony Newhall, who will give an illustrated presentation on his resourceful ancestor.

Tony, 68, is a resident of Valencia and was publisher for The Newhall Signal for 20 years. His family has lived in the Newhall area for more than 130 years.

Guests are welcome, Admission is free  
but donations are appreciated.  
For information, call John Lindsay at  
(818) 349-0878.

Yvonne DuVernet

## PRESIDENT'S CORNER

A Happy Spring to one and all. It is a wonderful time of the year, a time of renewal and birth. Many records made available each year and are generally available to us about now. I look for births in my existing families. It is a way to expand them as we need to wait a few years for the next census year to be available. I also try to find something new that I can do to expand my research. One way to find these is to attend classes or conferences which offer new ways to look at an old subject. Our VP of programs, Yvonne DuVernet works very hard to bring you insightful classes that can help you expand your research. At our board meeting we discussed the August Library trip and have decided to put it on hold, unless you as members express some interest. We thought that for August we would have a regular meeting. This will be a topic of discussion during the business portion of our April meeting. Please bring your ideas and share them with us.

As with all organizations we are in need of a few volunteers.

### PLEASE NOTE:

that we are still in need of a **secretary**—Cae still **needs to retire from her position.**

If you would be interested in giving some of your time to our society, please contact a member of the board and let us know. Good luck with your ancestor hunt and I hope to see you at this month's meeting.

Respectfully,  
Carma-Lu Thompson

## MEMBERSHIP

### Membership corner news:

### RENEWALS

Thank you to the following families for their SFVGS membership renewals: (Jerry) Baker, Bowman, Buckstaff, Clarke, Fitch, Glaze, Kusler, Laubenstein, Lemke, Marcy, Neill, Oatas, Pancratz, Ramirez, Reeves, Schafer, Soles, Strader, Taylor, Thompson and Wood.

We would like to acknowledge donations made to SFVGS from the following families: Thank you!! Patsy Marcy, Cae Pancratz, Dean and Eileen Schafer, Gayle Soles, Carma-Lu Thompson, Elaine Wood and

Sarah Wood.

It was great to see our guests, Janice and Harold Cozad, Tony and Barbara Saucedo, Ethel Ramen and Alwyna Crisler at the informative talk given by JonSchweitzer on Land Record research.

I am happy to tell you that we have another Society that will accept our bulletin by email. South Bay Cities Genealogical Society have agreed to accept it. That will save us a little bit too over the course of a year.

We have 26 members that have not paid their dues yet. Please bear with us as we change the way our membership renewals are handled beginning in March 2009. In the past, our renewal notices have been mailed to our members on their anniversary date. The membership renewals have not been returned to us in a timely fashion and it has been difficult for SFVGS to plan for our upcoming events not knowing how much revenue we have to work with. Our membership dues pay for the rental of the Chamber of Commerce room, our speakers, including the per diem for their travel, the paper goods for the refreshments, whatever expense is incurred regarding the Bulletin, such as printing, paper, stamps, etc., our P.O. Box yearly rental, and whatever else is needed. We now have a one time renewal date—every March for EVERY member.

The renewal form is included in this Bulletin (and emails) as a separate sheet. We ask that you who have not already done so, fill it out and mail it back to us—or you may bring it to the next monthly SFVGS meeting. Thank you for your continuing support as well as those of you who donated above the cost of your membership renewals this past year. We would not have been able to continue if not for your generous donations. Thank you also to all of you who provided your email addresses to us—this was an enormous help to our limited budget.

## CALENDAR

**A JAMBOREE REMINDER! The Jamboree weekend starts Friday June 26<sup>th</sup> and runs through Sunday the 28<sup>th</sup> at the Burbank Air-**

**port Mariotte Hotel and Convention Center.**

Early Bird Registration Discounts close May 1. The Early Birds will be assured of a copy of the Conference Syllabus—hard copy and disc. Registration may be accomplished on line at [www.scgsgenealogy.com](http://www.scgsgenealogy.com), or by mail:

SCGS Genealogy Jamboree Registration, 417 Irving drive, Burbank, CA 91504.

Early Bird non members of SCGS pay \$80 for the 3 days, or for single days: \$40, \$45, or \$40 for Friday, Saturday, or Sunday, respectively—SCGS members get discounts.

**SAVE THESE DATES FOR SFVGS:**

**May 15, 2009** Dr. Dickey will speak on "The Treasure of Church Records"

**June 19, 2009** Jimmy Weldon, the voice of Webster Webfoot and Yacky Doodle in the animated "Yogi Bear" series, will give a motivational speech on the history of our nation's flag.

**July 17, 2009** Gena Philibert-Ortega will present "Using Google for your Genealogy"

**OTHER DATES**

**APRIL 4**—Clark County, Nevada Spring Family History Seminar featuring **Dr. George Schweitzer**. For information:

[www.rootsweb.ancestry.com/~nvccngs](http://www.rootsweb.ancestry.com/~nvccngs).

**APRIL 25**—The Sonoma County Genealogical Society will present **Lloyd deWitt Bockstruck** at a seminar in Santa Rosa. Details can be found at:

[http://www.rootsweb.ancestry.com/~cascgs/bocks\\_truck.htm](http://www.rootsweb.ancestry.com/~cascgs/bocks_truck.htm).

**APRIL 25**—Fair Oaks, California The Root Cellar, Sacramento Genealogical Society's Spring Seminar will feature **Geoff Rasmussen** of Legacy-Millennia Corporation. For more information about this event, go to the society's Web site: [www.rootcellar.org/](http://www.rootcellar.org/).

**MAY 9**—Conejo Valley Genealogical Society Annual Seminar featuring **Barbara Renick**. Get information by emailing: [cvgs2009seminar@aol.com](mailto:cvgs2009seminar@aol.com).

**MAY 13-16**—National Genealogical Society Conference, Raleigh, North Carolina. Check the web site: [www.ngsgenealogy.org/conferences/2009/index.htm](http://www.ngsgenealogy.org/conferences/2009/index.htm).

**May 16**—Hemet-San Jacinto Genealogical Society presents **Geoff Rasmussen** at their annual seminar. Info at: [www.hsjgs.org/May\\_Seminar09.htm](http://www.hsjgs.org/May_Seminar09.htm)

**June 19-21**—Genealogical Society of Hispanic America. It's official. We are returning to the Sagebrush Inn & Conference Center in Taos, NM. Donie Nelson <http://www.gsha.net>

**JUNE 26-28**—Southern California Genealogical Society Annual Jamboree at the Marriott Burbank Hotel in Burbank. Information at: [www.scgsgenealogy.com](http://www.scgsgenealogy.com).

**NOTES TO MEMBERS****GOOD NEWS**

The final paper work with the Family History Library has been completed which has certified SCGS has a Family Search Center where you can order microfilms from Salt Lake City. Just in time to offer an alternative venue to consider, following the closure noted below.

**LOS ANGELES REGIONAL FAMILY HISTORY CENTER TO CLOSE FOR RENOVATION**

The Family History Center on Santa Monica Blvd. will be closing as of April 26 for renovations. It is expected that the facility will be closed until the fall. It is my understanding that they have had rain damage. The Orange Family History Center would be one good alternative.

Susan M. Roe  
SueMHR@aol.com  
President, California State  
Genealogical Alliance

**Preserving the American Historical Record (PAHR)**

A bill to provide federal formula grants to every state for projects that preserve historical records and make them more accessible.

**CURRENT STATUS**

**We're ready for 2009!** Representatives Maurice Hinchey (D-NY-22) and John McHugh (R-NY-23) are about to reintroduce the PAHR bill (with a new bill number). They are currently circulating a Dear Colleague letter to members of the House. It is

expected the bill will be introduced by the end of March.

#### ***ACTION ALERT***

Ask YOUR representative to sign the Dear Colleague Letter. Ask them to contact either Mike Iger in Congressman Hinchey's office (202-225-6335 or michael.iger@mail.house.gov) or Jason Miller in Congressman McHugh's office (202-225-4611 or [jason.miller@mail.house.gov](mailto:jason.miller@mail.house.gov)). For more information: <http://www.archivists.org/pahr/index.asp>

#### **ARCHIVAL MATERIALS**

##### **One answer**

Can anyone send me information where (on line) I can order Archival storage boxes (as for Bible's, scrap-books, etc.)? I would appreciate any help I can get on this as the places I used to use are long out of business. Barbara Edkin

**AEDKIN@aol.com**

Hello Barbara,

Here at the Mission archive, I use whatever vendor can give me the best price as they all carry, for the most part, the same merchandise. We use A LOT of preservation boxes, all sizes and shapes, unbuffered tissue, gloves, special hangers for the vestments, sign holders, and on and on. We just redid our whole museum and I purchased most of the items from Brodart and Gaylord.

Hope this helps,  
Sheila

#### **Fifth Annual Genealogy Fair**

**WHAT:** The National Archives will host its fifth annual [Genealogy Fair](#). This year's two-day program will showcase Federal records located at the National Archives and professional genealogy organizations' resources for family history research. Sessions include introductions to genealogy research, census records, Freedman's Bureau records, immigration records, Congressional records, Native American records, and much more. National Archives staff will demonstrate how to use databases including the [Archival Research Catalog \(ARC\)](#) and [Access to Archival Databases \(AAD\)](#). The fair will provide information and guidance for experienced genealogy professionals and novices alike. Winners of the [National Archives Awards for Excellence in Genealogy](#) will be announced at a ceremony during the fair. The fair is free and open to the public and presented in partnership with the Foundation for the National Archives and

[Ancestry.com](#). See a [schedule of lectures and demonstrations](#)

**WHEN: Wednesday and Thursday, April 22-23, 2009, 9:30 a.m.–4:30 p.m.**

**WHERE:** Research Center, [National Archives Building](#), 700 Pennsylvania Avenue, NW, Washington DC. Government-issued photo ID or student ID is required to enter the building. The closest Metro stop is the **Archives/Navy Memorial** stop on the Yellow and Green lines. The National Archives is fully accessible. To request an accommodation (e.g., sign language interpreter) please e-mail [reservations.nwe@nara.gov](mailto:reservations.nwe@nara.gov) or call 202 357-5000 at least two weeks prior to the event.

**WHO:** Speakers include historian at the U.S. Citizenship and Immigration Services, Marian Smith; professional genealogists and National Archives volunteers Claire Bettag and Susannah Brooks; and National Archives experts Juliette Arai, Rebecca Crawford, Damani Davis, John Deeben, Tom Eisinger, Lynn Goodsell, Jeffery Hartley, Jill James, Claire Prechtel Kluskens, Daniel Law, Trevor Plante, Constance Potter, Rebecca Sharp, Katherine Vollen, and Reginald Washington.

#### **Background**

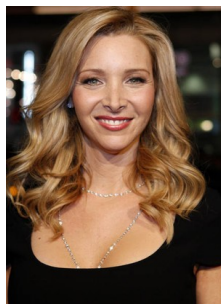
The National Archives holds the permanently valuable records of the Federal government. These include records of interest to genealogists, such as pension files, census and Freedmen's Bureau materials. For information on National Archives holdings see [www.archives.gov](http://www.archives.gov).

For more information, e-mail [KYR@nara.gov](mailto:KYR@nara.gov).

#### **WHO DO YOU THINK YOU ARE**

**[NBC is set to premiere the new reality TV series, Who Do You Think You Are? on April 20, 2009](#)**

This engaging new series gives viewers a glimpse into the personal lives of our favorite celebrities allowing us to learn not only more about that individual, but also about our country's history on a grand scale," said Craig Plestis, Executive Vice President, Alternative Programming, Development and Specials, NBC Entertainment. We hope this series will inspire our viewers to investigate their own intriguing past.



Former Friends star, Lisa Kudrow is the executive producer of the series. The first celebrities exploring their family histories on the U.S. reality TV show are; Lisa Kudrow, Sarah Jessica Parker and Susan Sarandon, NBC revealed on Tuesday.

Additional celebrity names are expected to be announced soon.

Who Do You Think You Are? is produced by Wall to Wall productions in association with Is Or Isn't Entertainment. Bryn Freedman, the producer of Intervention is the co-executive producer of this historical series. The new show is based on the hit, award-winning BBC television documentary series created and executive-produced by Alex Graham.

---

## BBCNEWS WWI KILLED

Piecing together the past  
By Robert Hall, BBC News

Detective work by a British historian has unearthed information that could enable thousands to piece together their family histories.

### Historian Peter Barton explores the archives:

Peter Barton was commissioned to carry out research into the identities of World War I casualties discovered in a mass grave at Fromelles in France. He was given access to the basement of the Red Cross headquarters in Geneva. There, he was allowed to examine records that have lain virtually untouched since 1918. He estimates that there could be 20 million sets of details, carefully entered on card indexes, or written into ledgers.

The records could potentially reveal the whereabouts of individuals whose remains were never found, or never identified. Grave after grave in the World War I cemeteries mark the last resting place of an unknown soldier.

The Red Cross hope to have the archive on line by 2014, 100 years after the start of World War I. They

believe that the care and patience of their volunteers during the conflict coupled with today's technology will provide a key to unlock the past.

To read the complete article go to:  
<http://news.bbc.co.uk/1/hi/uk/7940540.stm>

---

## PERSI (Periodical Source Index)

from [bonniepetrovich@aol.com](mailto:bonniepetrovich@aol.com)

PERSI is a database of references going as far back as 1800 to articles in history and genealogy magazines and journals published in the United States and Canada. You can search PERSI for, say, a surname, town or topic, and results will show citations for articles related to your search term.

Examples of resources you might find using PERSI include a historical society journal article that mentions your ancestor, an out-of-print magazine about a family hometown, or a how-to magazine with hints for doing research in the old country.

Note PERSI doesn't have the articles themselves—rather, it has the title, date and other information that will help you find the article of interest.

The PERSI database is searchable through Heritage-Quest Online, a genealogy data service available free through many public libraries—free with a LA Co library card or at the FHC (check your library's Web site or ask at the reference desk) or at Allen County, Ind., public library location. (The Allen County library's genealogy staff compiled and updates PERSI.)

Subscription Web site, Ancestry.com, also has PERSI, though its version isn't as up-to-date as the others mentioned.

Once you find a citation for an article you want, see if the publication is available through your library or another library near you. If not, ask if the library can borrow it (or at least get photocopies) through interlibrary loan. Another option: The Allen County Public Library has the periodicals that are indexed in PERSI; you can order photocopies for a fee.

Posted by Diane

**2009 Membership Renewals Now Due – Don't miss a bulletin!**

To remain a member of the San Fernando Valley Genealogical Society and receive the bulletin please remit your payment with the following form. Thank you for your continued support and patience as we make the change to a once a year membership renewal for all of our members.

**San Fernando Valley Genealogical Society Member Renewal Application**

Name \_\_\_\_\_

Address \_\_\_\_\_

City \_\_\_\_\_ State \_\_\_\_\_ Zip \_\_\_\_\_

Phone \_\_\_\_\_ Email \_\_\_\_\_

Membership type:

\_\_\_\_\_ Individual      \_\_\_\_\_ Senior      \_\_\_\_\_ Family

Annual dues are:

\$25 for an individual

\$30 for a family

\$20 for Senior (age 65 and older)

Please send the form and check made payable to:

SFVGS – San Fernando Valley Genealogical Society

P.O. Box 3486

Winnetka, CA 91396-3648

# SAN FERNANDO VALLEY GENEALOGICAL SOCIETY



**Return to:**  
Editor, Bulletin  
18620 Chase Street  
Northridge, CA 91324

## Society PUBLICATIONS:

San Fernando Valley Vital Statistics,  
Newspaper Abstracts;  
Vol. I (1911-1925), Vol. II (1926-1934),  
Vol. III (1935-1940), Vol. IV (1941-1945).  
*Guide to Revolutionary War Records in  
the L.A. Libraries*  
*Genealogical Holdings in the Mark  
Harrington Library*

---

The San Fernando Valley Genealogical Society  
Mail Address: P.O. Box 3486  
Winneteka, CA 91396-3486

Member: Federation of Genealogical Societies  
California State Genealogical Alliance  
San Fernando Valley Heritage Network

**Web site:** < <http://www.rootsweb.com/~casfvgs> >

**ORGANIZED** in 1981 as a NON-PROFIT 501 (c) (3) organization, the Society exists to encourage genealogical research and interest in family history, to help others gather genealogical information, and to preserve historical and genealogical material.

**MEMBERSHIP** is open to anyone interested in genealogy. Dues include subscription to the S.F.V.G.S. Bulletin. Annual dues are:

**Individual:** \$25  
**Senior** (age 65 and older) \$20  
**Family:** \$30

The **Bulletin** is published monthly (except August and December) and includes announcements of speakers and other information of interest to members, including family queries.

### MEETINGS ARE FREE TO THE PUBLIC

Regular meetings are held the third Friday of each month, 7:30-9:30 P.M., at Chatsworth Chamber of Commerce room in the Chatsworth Train Station 10038 Old Depot Plaza Road, Chatsworth, CA.. The main feature of each meeting is a guest speaker presenting a program of genealogical or historical interest. Society business is conducted as needed, including announcements of activities of related societies. Refreshments are provided. Workshops, Seminars, and Classes are offered periodically.

## OFFICERS

<b>President.</b>	Carma-Lu Thompson (818)718-1866 E-mail: <clu5536@yahoo.com>
<b>V.P. (Programs)</b>	Yvonne DuVernet (661)965-5234
<b>V.P. (Membership)</b>	Sue Bowman (818)363-3225 E-mail: <rbowman@ucla.edu>
<b>V.P. (Editor)</b>	Ad Lockwood (818)885-8136 E-mail: <addis4@earthlink.net>
<b>Secretary</b>	Cae Pancratz (818)348-6469 E-mail: <lcpancratz@earthlink.net>
<b>Treasurer</b>	Lynn Neill (818)360-9792 E-mail: <meneill@aol.com>
<b>Webmaster</b>	Tricia Bennett (818)784-3000 E-mail: <trisharae@earthlink.net>
<b>Publicity</b>	Donna Chellew (818)341-1466 E-mail: <rchel53484@aol.com>
<b>Hospitality</b>	Evelyn Acuña (818)838-9292 E-mail: <eracuna@verizon.net>
<b>Editor Emeritus</b>	John Lindsay (818)349-0878 E-mail: < <a href="mailto:Indssy@sbcglobal.net">Indssy@sbcglobal.net</a> >
<b>President Emeritus and Founder</b>	Muriel Fisher