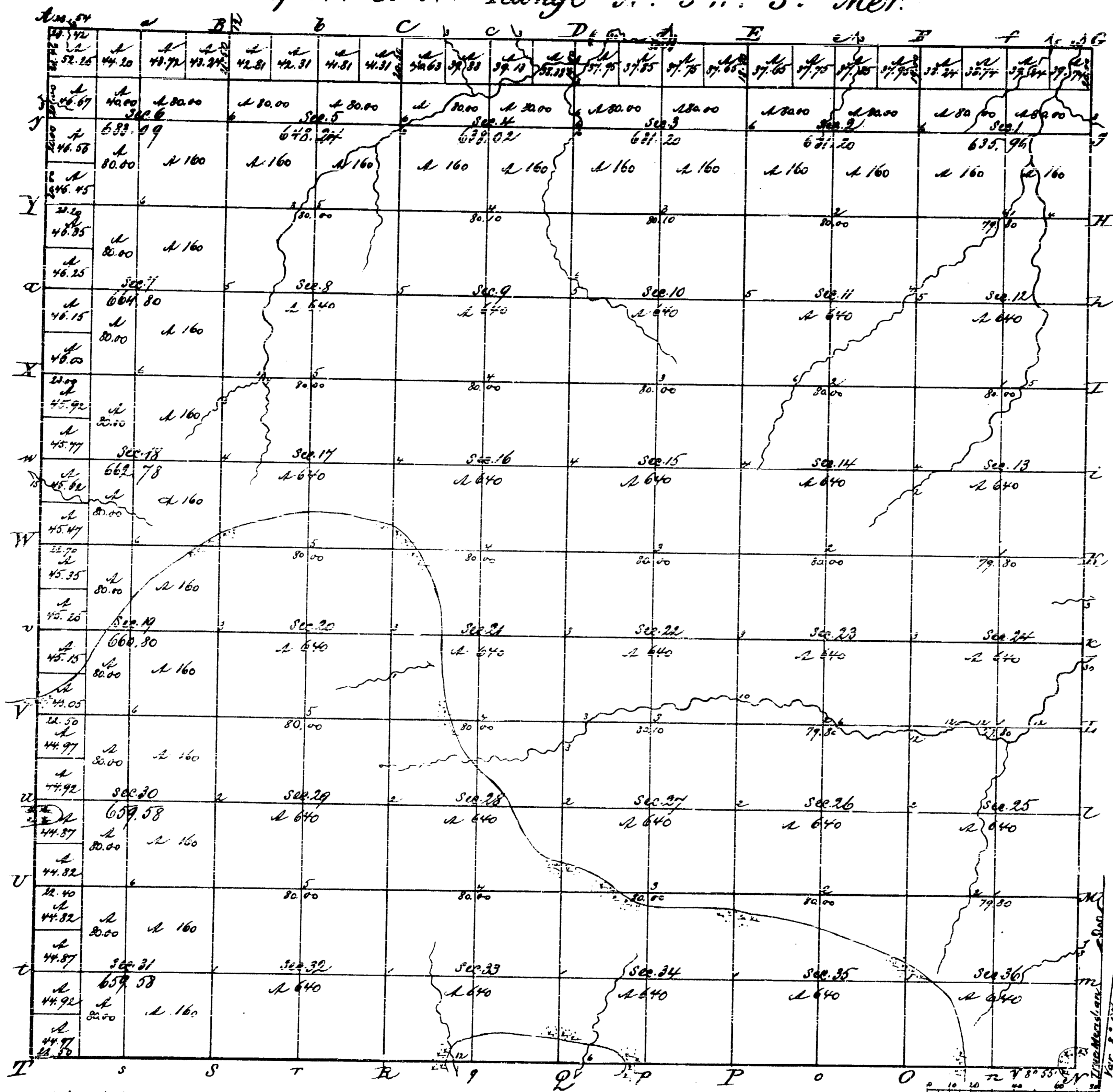


Township N. 91 N. Range N. 5 W. 5th Mer.

Open Dec. 4. 1838 with Surveyor General's letter dated Nov. 25. 1838. Clayton



Vol. 114 ft

Total number of Acres 23, 175.25

Survey Designated	By Whom Surveyed	Date of Contract	Amount of Survey	When Surveyed	When B'n and O'n the Sur. was made
Township lines	Orson Lyman	Nov. 8. 1836	N. 62. 123	29 <sup>th</sup> 9 <sup>th</sup> 1837	29 <sup>th</sup> 9 <sup>th</sup> 1838
Subdivisions	Paul W. Whuman	Dec. 1. 1837	60. 11. 60	11 <sup>th</sup> 9 <sup>th</sup> 1838	29 <sup>th</sup> 9 <sup>th</sup> 1838

The above map of Township No. 91 North of Range No. 5 West of the 5th Principal Meridian Iowa Territory, is strictly conformable to the field notes of the survey thereof on file in this Office, which have been examined and approved by the Surveyor General's Office  
 J. P. Gaines  
 Surveyor General  
 Dec. 30. 1838  
 Cust. Clerk