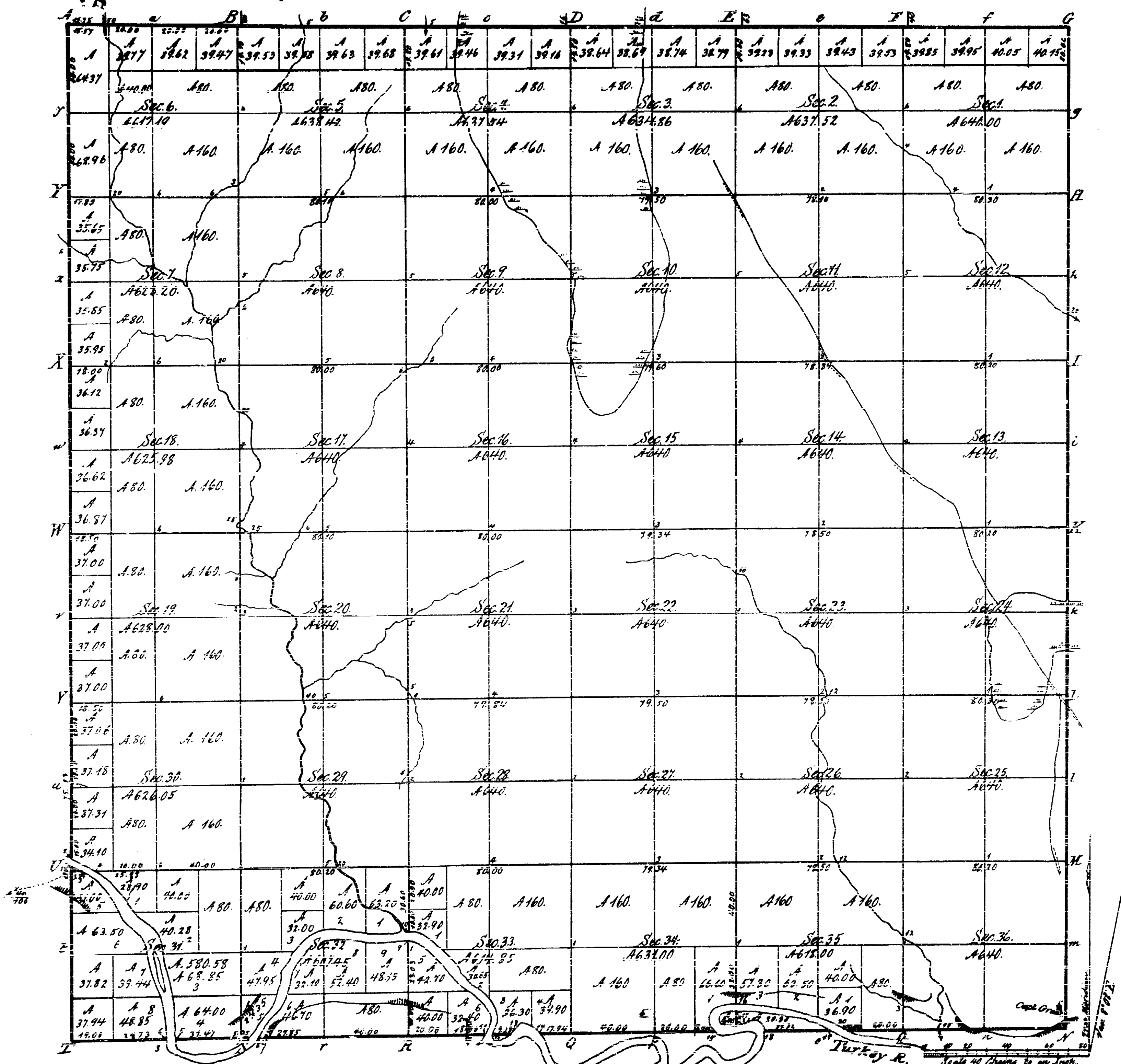


Clayton

Township N<sup>o</sup> 92N, Range N<sup>o</sup> 3W, 5<sup>th</sup> Mer. (Iowa Ter.)

Rec'd Dec. 4, 1838 with Surveyor General's letter dated Nov. 22, 1838.



Total number of Acres 22795.64

Survey Designated	By Whom Surveyed	Date of Contract	Amount of Survey	When Surveyed	When for and out of the Survey
Township Lines	Orson Lyon	Nov. 8 <sup>th</sup> 1836	25. 74. 75	2 <sup>nd</sup> of 1837	3 <sup>rd</sup> of 1838
Subdivisions	Jos. B. Timmon	Dec. 1. 1837	68. 36. 74	7 <sup>th</sup> of 1838	2 <sup>nd</sup> of 1839

The above Map of Township N 92 North, of Range N 3 West of the 5<sup>th</sup> Principal Meridian, Iowa Territory, is strictly conformable to the field notes of the survey thereof on file in this Office which have been examined and approved.

Surveyor General's Office,  
Cincinnati, Oct. 20 1838.

*E. P. Jones*  
Sur. Gen.