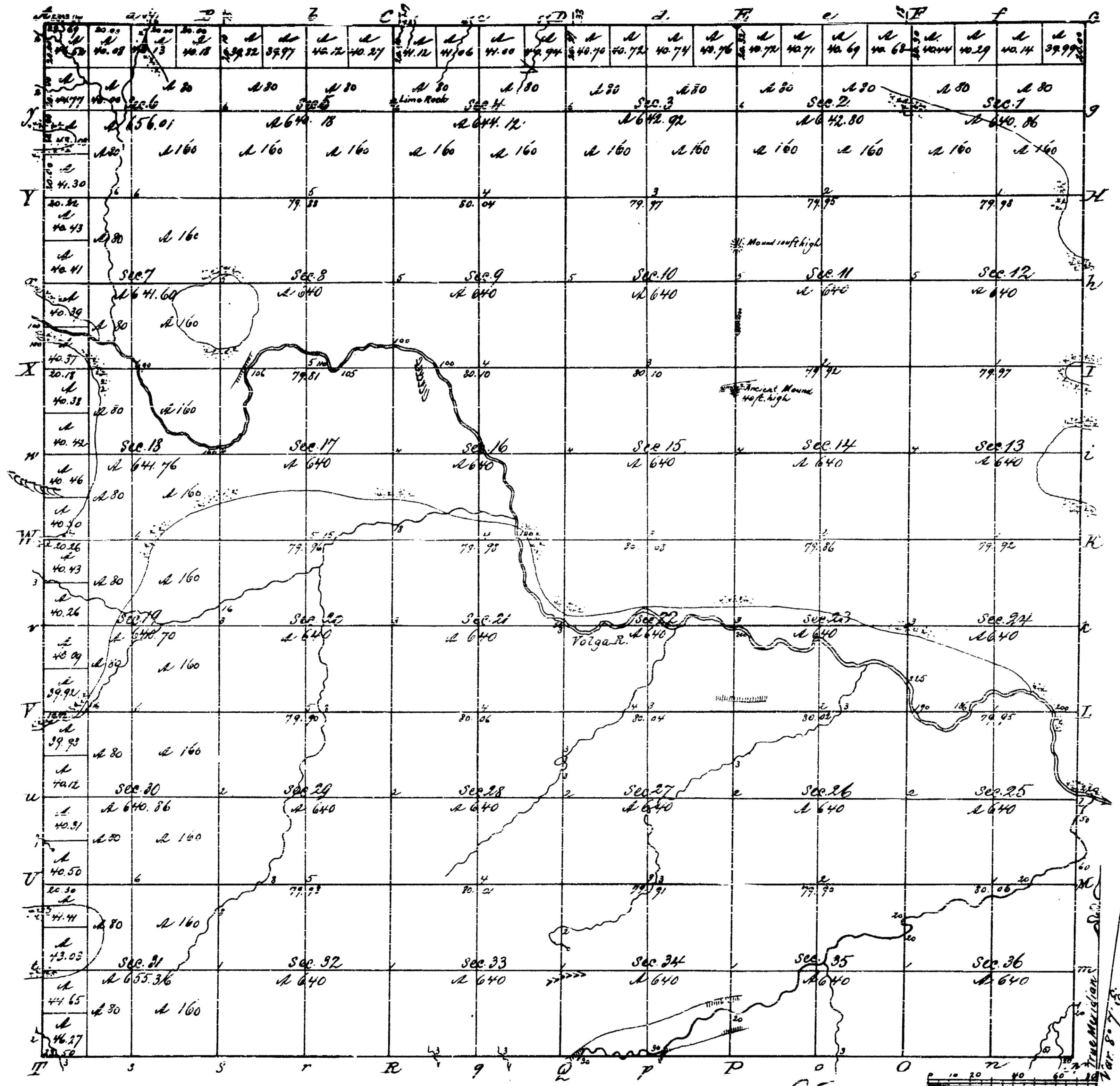


Dec. 4, 1838, with Surveyor General  
 July, dated Nov. 23, 1838

Clayton

Township N<sup>o</sup> 92. Range N<sup>o</sup> 5 West 5<sup>th</sup> Mer.



Vol. 114, A.

Total number of Acres: 23,087.17

Survey Designated	By Whom Surveyed	Date of Contract	Amount of Survey	When Surveyed	When For and Ch <sup>d</sup> in the Sur <sup>r</sup> Gen <sup>l</sup> 1838
Township lines	Osborn Lyon	Nov. 8 <sup>th</sup> 1836	M. Ch <sup>d</sup> 143	2 <sup>nd</sup> yr 1837	3 <sup>rd</sup> yr 1838
Subdivisions	John P. B. [unclear]	July 3 <sup>rd</sup> 1838	60, 02, 27	3 <sup>rd</sup> yr 1838	4 <sup>th</sup> yr 1838

The above Map of Township No 92. ~ of Range No 5 West of the 5<sup>th</sup> Meridian, according to the Secretary is strictly conformable to the field notes of the survey made in this office, which have been examined and approved.  
 Surveyor General's Office }  
 Cincinnati, Oct. 20, 1838 } C. P. Clarke  
 True Seal