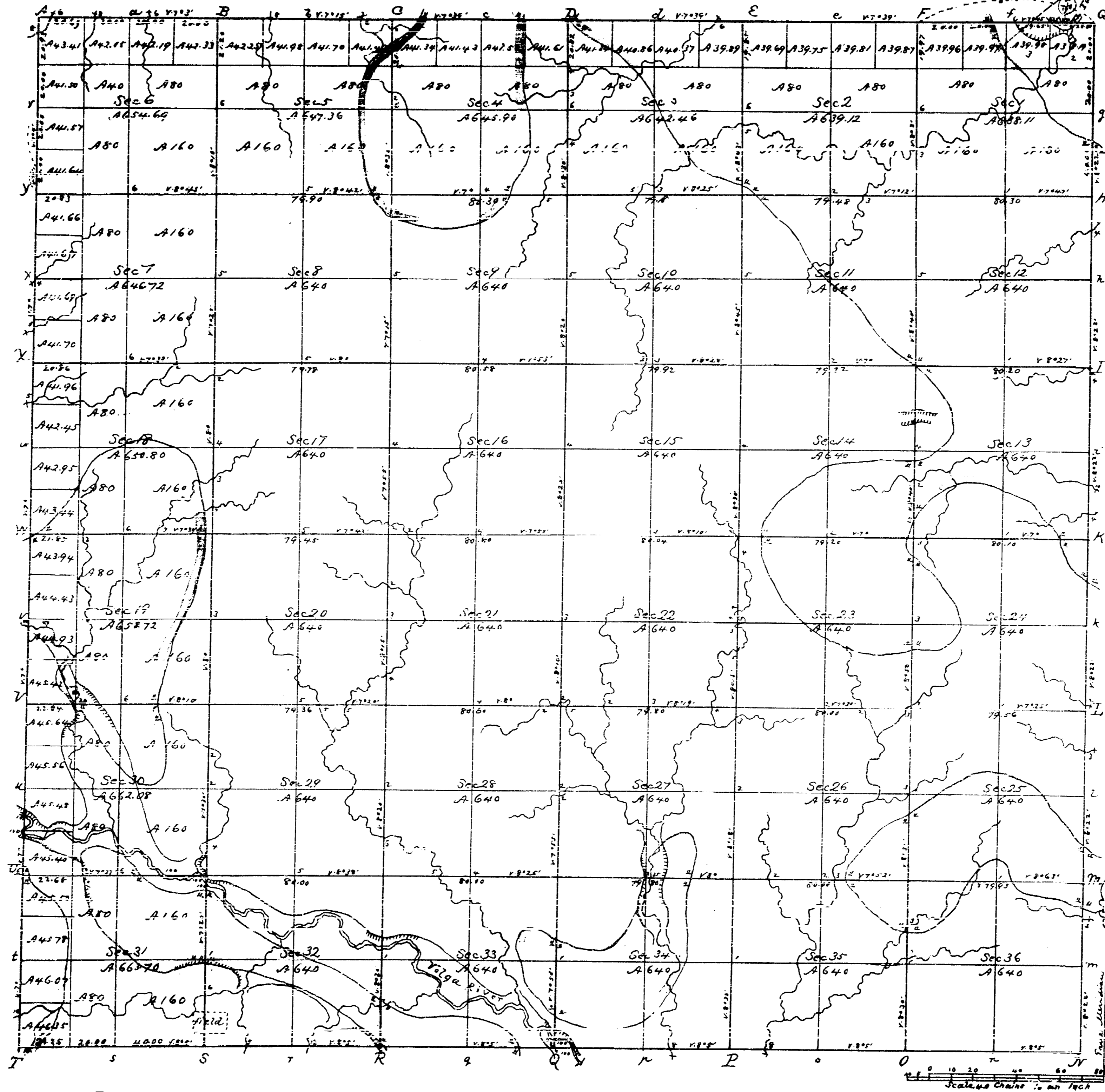


C. Clayton

Township N^o 93 N, Range N^o 6 West 5th Mer.

Recd with letter of July 24/49



V. 114 B

Total number of Acres 23149.66

Surveys Designated	By whom surveyed	Date of Contract	Amount of Surveys	When Surveyed	When filed and checked in the Sur. Gen's Office
S. E. part of W. Township lines	Olson Lyon	Nov. 27 th 1836	NE 1/4 17-15-65	June 1837	3 ^d Q ^r 1838
Subdivisions	John Fitzpatrick	Oct 16 th 1848	60-25-88	Oct 1848 & May 1849	
N. W. part of W. Township lines	Guy H. Corleton	July 26 th 1848	6-69-22	August 1848	

The above Map of Township N^o 93 North of Range N^o 6 West of the 5th Principal Meridian State of Iowa is strictly conformable to the field notes of the survey thereof, on file in this Office which have been examined and approved.

Surveyor General's Office
Dubuque July 24-1849

R. W. Booth Sur. Gen.