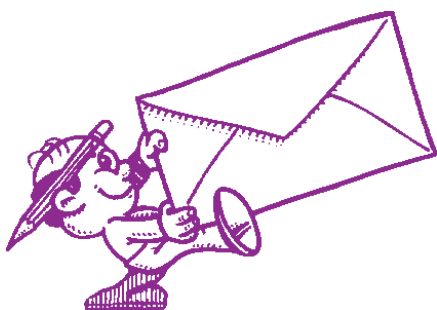




**1930 CENSUS
AVAILABLE IN
APRIL**

Continued from Last Month
See page 5



**Last newsletter
unless you mail in
your dues!**



**Need to Improve
Your Surfing Skills?
Don't Miss . . .**

February 16, 2002

Organizing Your Web Browser



BEVERLY LEVINE SMALLWOOD



STEVE OLSON



JIM COTTRELL

**Bookmarks out of control?
Can't find your way back to that really cool site?
Important email getting lost in a sea of spam?**

Learn to manage your internet life.
We even have some tips to offer AOL users.

Find out how to utilize filters, blocking, bookmarks, address books and other tips to improve your on-line efficiency. Beverly will demonstrate Netscape techniques, Steve will de-mystify Internet Explorer and Jim will ask the musical question, "Do You Yahoo?"

March 16, 2002 Publishing Your Family History

MIKE KARSEN

This presentation shows how various genealogical reports, documents, and personal stories can be easily compiled into a Family History. The Family Tree Maker computer program has a Publishing Center which aids in this effort. All of this can be compiled into a nicely numbered book with a cover page, table of contents, and index.

April 20, 2002 What's New in 2002?

ED ROSENTHAL

What are the latest technological developments in the computer industry? Ed will have a volunteer from the audience put together a slide show that can be placed on CD, a ten minute effort! Other topics include XP, Scanners, Printers and Video editing (which will be big this year).

January Meeting Notes by Anne Jacobs

Using a Digital Camera for Genealogy

presented by Stan Schmidt

CAGG-NI's first meeting of 2002 was a popular subject. (We may outgrow our meeting space soon.) Many of us are interested in what a digital camera could do for our research. **Stan Schmidt** gave us that answer. He traveled to Poland where a copying machine is not always available so he used his camera instead. Memory cards are purchased to take the place of film. One memory card of 32 meg will hold 128 photographs. This is a great reason to buy one.

Stan listed both benefits and shortcomings of using a digital camera. Benefits:

- ◆ No film to buy, especially overseas where it may be hard to find
- ◆ No development costs
- ◆ Is not affected by x-rays at airports
- ◆ Can see result immediately (know if you need another picture right away)

Shortcomings:

- ◆ Initial cost is greater
- ◆ Memory and accessories add to cost
- ◆ Batteries need recharging
- ◆ Low current (voltage)
- ◆ SCR (high voltage) is extra cost
- ◆ Internal flash provides a small amount of light which may require an attachment for extra light

Some tips which **Stan** gave are:

- ◆ Take your laptop. You can "download" images from your camera memory card to your laptop freeing it up to take another 128 pictures.
- ◆ Practice before your trip. You can make any adjustments/purchases easily at home.
- ◆ A cheap alternative for a filter is to use a tissue over the flash which will prevent bleed out of the image if you are too close.
- ◆ Purchase additional memory cards
- ◆ Take an extra battery.
- ◆ Purchase a power adapter for where you will be using it.
- ◆ Remember security precautions. Having a digital camera and a computer can make you a target.

After you have taken a picture, software can be used to manipulate images to "improve" on what you have already done. **Stan** uses PhotoShop but there are many different packages. With these packages, you can select black and white, color or sepia as the color palette you will use. You can remove color also. Improving the picture may include straightening the image, cropping a portion removing unin-

teresting sections, adjust brightness and contrast, enhance it or enlarge it.

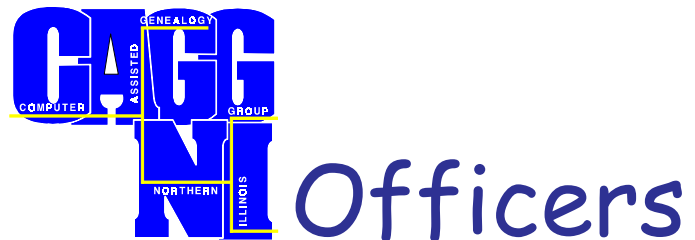
Stan hopes we can all make use of all the information he passed on and enjoy your next trip to your ancestral country, or the cemetery, or even a library.

Refreshments seem to be important to attendees as once again we had plenty. **Lynn Haider** organized the kitchen while **Harold Bodinet** made his usual great pot of coffee.

CAGG-NI is still looking for members for a few positions. Please contact any officer to volunteer for these positions:

Promotions/Publicity Chairperson – Coordinate volunteers performing publicity tasks including mail, e-mail, brochures to libraries and certificates to workshops.

Secretary – Create newspaper column of meeting notes and correspond as necessary for CAGG-NI



President	Beverly Levine Smallwood cagg_ni@yahoo.com
VP/Program Director	Patricia Weisshaus PatJW28@interaccess.com
Financial/Membership	Henry (Chip) Douglas CDouglas1@ameritech.net
Promotion/Publicity	Open
Acting Secretary	Anne Jacobs AnneJ@inorbit.com
Newsletter Editor	Jim Cottrell JimboDeuce@Yahoo.com
Refreshments/Greeters	Janice Wasmer
Web Master	Robert Pulse ROPulse@aol.com
Computer Mentors	Ken Cramer Anne Jacobs AnneJ@inorbit.com Robert Pulse
Genealogy Mentors	Larry Olson Geneva Shay Patricia Weisshaus PatJW28@interaccess.com

President's Letter

I had a chance to reflect a bit while preparing for this month's topic. The goal of the session is to simply provide tips and tricks to better use the tools (browser & email) to manage the glut of electronic data (web pages and email lists). Is that really enough?

Our mission here at CAGGNI is to share, teach, and learn how technology can improve our genealogical journey. When I first started doing research, I worked entirely on paper forms. After rewriting those forms for the umpteenth time, I started to wonder if there wasn't a computer program that could remember what I'd written, allow me to add, delete and edit as necessary, and then print out fresh copies on demand. Early genealogical programs did that and little else. Sharing your data meant lugging your notebooks and files to the nearest copy machine and spending some money on postage and large envelopes. Times have certainly changed!

Sharing is perhaps too easy now. The process has become so automated that very little thought or effort is necessary to post your family on the internet. Each day new genealogists are being born out of casual web surfers. Without any education in the finer points of research, like source citation, they are able to share their "research" with the world. This "research" often consists of little more than downloading a bunch of gedcoms and shoehorning them into the family structure they know.

It seems to me that, in addition to learning to use our tools better, we need to be ever cognizant of two things: Not everything on the internet (or in the newspaper, on the headstone, in a book, etc.) is true. And, secondly, we need to take extra care when we publish our research. Fortunately, in addition to all this "data", the internet also has a good many web sites designed to teach the principles of sound research and documentation. Let me suggest a few other ways to improve your skills: join a genealogical society and attend the meetings, take a class, read a book or two, and talk with other genealogists.

Ultimately, it is the carpenter, not the tools, that builds the house.

Beverly Levine Smallwood

I asked Marty Ryerson for permission to reprint his message because it is probably the experience of many new researchers. Additionally, I think he expresses it in an humorous and insightful way. Enjoy.

Subject: [TMG] OT - Why Internet Trees are bad - one man's experience

Date: Mon, 17 Dec 2001 21:21:17 -0500

From: "Marty Ryerson" <martyr@charter.net>

To: TMG-L@rootsweb.com

One evening about a year and a half ago I was bored, and I was surfing the Internet/World Wide Web. I entered my surname in a search engine. I came across a "Family" web site for my surname, and became convinced that I was related to that family. I was hooked.

A bit more surfing brought to my awareness a very popular genealogy program. I am not exactly a pushover - I did check out several. But this one seemed to have all the best reviews, so I went out and bought it. It was the only one available on the shelf at Office Depot, which is about the only place to get software in my small town.

After I had entered a few names, this very popular program "suggested" that I should post my "research" on the web. Of course, I thought that was the thing to do. It also offered to "search the whole web" for me, and of course I did. It then offered to sell me access to family trees containing millions of names, so I bought that. My family tree grew amazingly fast! Soon my very popular genealogy program was congratulating me on the number of individuals I had entered.

By this time, I began to feel that there might be more to this subject than I had first thought. I began to enter "genealogy" at places like amazon.com, and in search engines. I began to realize that genealogy is actually a profession. Meaning they have standards and rules. Although I have never seen an actual college degree in genealogy, there are lots of certification programs. Soon I realized that I had made a real mess of my "data".

Then I saw an ad for TMG.

After using TMG for about a year, I have learned some of the ways to use it, and many, many, of the ways NOT to use it. One of those is: DO NOT IMPORT DATA FROM A VERY POPULAR GENEALOGY PROGRAM THAT YOU DO NOT KNOW HOW TO USE. I plan to start all over, and try to do it right, but I thought I would wait until version 5 came out. Maybe by then I will know enough about genealogy to get it right.

One or more of the "garbage" trees you have found on the "InterWeb" may have been mine. I apologize. I did not know any better. The program made me do it.

Be Good For Now,

Marty

As I said in last month's newsletter, the 1930 census will be made public on April 1st, 2002. It will be available at the National Archives in Washington, DC, and its 13 regional branches (NARA) on that day. The first week of April, NARA will begin shipping any "whole state" or "whole country" orders. They will not be accepting individual film or less than "whole state" orders until April 1st. This means that we can make an appointment to view the films at NARA Great Lakes Region¹ for anytime April 1st or later. Places like the Family History Library, Allen County Public Library and the Newberry will probably have it cataloged and available within a month or so. Add a month or two more for smaller libraries ordering a single county.

The vast majority of the 1930 census has not been indexed. For this reason, a different strategy will be required. If you completed the steps outlined last month, you have a list of names and addresses circa 1930. There are, at this point, three or four possible ways to find people in the population schedules.

If you are searching for people in the south², you will be able to use the soundex cards which were prepared by the WPA nearly sixty years ago. These were microfilmed and will be available to you at the Archives and larger libraries. Work out the soundex codes <http://www.nara.gov/genealogy/coding.html> and count yourself lucky.

If you are not looking in the south, you'll have to work a little harder. If your people lived in a rural area, just pull the film covering that county, scroll through to the township, and start reading.

If you are looking in a city or town, you might be able to narrow down the search a bit. The Census Bureau divided up the area to be covered into Enumeration Districts (EDs). These EDs were deemed to be an area that a single census taker could canvas in the allotted census period. EDs could range in size from several city blocks up to an entire county, depending on the density of the population.

I find it helpful to know the layout of the streets. City directories generally have a street guide in the front (or sometimes the back). From this you should be able to narrow down the cross-streets. Know where the major streets are in relation to the target house. This will help you find it on a map, contemporary or modern.

NARA microfilm publication *'T1224 Descriptions of Census Enumeration Districts, 1830-1950'* is available to you now. Using this, along with a map, you can draw out the EDs. Then, locate your addresses and see which EDs they fall into. This limits you to part of one film to read, and not even that. You should be able to scan down the side at the street names and then the house numbers to speed things

along.

Newly released is *'M1930 Enumeration District Maps for the Fifteenth Census of the United States, 1930'* on **color** microfilm. These maps vary in size and scale. Some are parts of the city, others are the entire city. Some are hand drawn, some are printed commercial maps. The EDs were drawn and numbered on them in grease pencil. Early reports are that these maps are difficult to read and use. This is why it is especially important to know the "lay of the land". Be able to locate your target based on its location relative to major streets and landmarks.

For the larger urban areas, you will want to consult *'M1931, Index to Selected City Streets and Enumeration Districts, 1930 Census'*. Seven rolls of microfilm cover over 50 cities. Each street is listed with the ED numbers corresponding to address ranges along that street. Similar to this is a database being developed by Joel Weintraub targeting the 100 largest U.S. cities at: http://groups.yahoo.com/group/ITWIT_Census1930/ (note: there are no spaces in this address. Use the underscore character in what might look like a space)

I wish there were this many tools for the earlier censuses. Do I wish there was a soundex? Absolutely. Am I going to wait for Ancestry or Heritage Quest to produce an index in 5 or 10 years? Absolutely not. So now you know your tasks. Take your list of names and addresses down to the Archives now and start figuring out the EDs so you can hit the ground running on April 1st.

Want to study further? Check <http://www.nara.gov/genealogy/1930cen.html> for updates and more detailed descriptions; and <http://www.nara.gov/genealogy/citydirs.html> for a list of city directories available at NARA and its regional branches.

A Look at the Census <http://alookatcook.com/1930/> has Cook County (Illinois) enumeration district descriptions for the county and ED & ward maps for the city of Chicago.

¹ National Archives, Great Lakes Region, 7358 S. Pulaski Road, Chicago. (773) 581-7816 x138
By appointment only.

² The states of Alabama, Arkansas, Florida, Georgia, Louisiana, Mississippi, North Carolina, South Carolina, Tennessee and Virginia were fully soundexed. The counties of Bell, Floyd, Harlan, Kenton, Muhlenberg, Perry, and Pike in Kentucky and the West Virginia counties of Fayette, Harrison, Kanawha, Logan, McDowell, Mercer, and Raleigh were also completed.

Other Group Events Compiled by Beverly Levine Smallwood

19 FEB 2002 - 7:30PM

Genealogy, Roots and Black History

Tony Burroughs

Sign up at the registration desk at the Mount Prospect Public Library, 847-253-5675, www.mppl.org

20 FEB 2002 - 7:30PM

The Lincoln-Douglas Debates Reenactment

Tinley Moraine Genealogists, The Landmark Church,
6727 W 174th Street, Tinley Park

21 FEB 2002 - 7:30PM

Lynne Mickle Givens

Des Plaines Historical Society

Forest View Education Center, 2121 S Goebbert,
Arlington Heights

Northwest Suburban Council of Genealogists

<http://www.mtprospect.org/nsgs/>

21 FEB 2002 - 7PM

Michelle Bemis

Utilization of Internet in Genealogical Research

Elgin Genealogical Society

Gail Borden Public Library

<http://www.elginarea.org/egs/>

24 FEB 2002 - 2PM

"Ellis Island Database"

Scott Meyer

Jewish Genealogical Society of Illinois.

North Suburban Synagogue Beth El

1175 Sheridan Rd, Highland Park

Room #1 - Natkin Room (in the religious school)

<http://www.jewishgen.org/jgsi/#meetings>

27 FEB 2002

Land Records by Sue Jackson

Naperville FHC, 1320 Ridgeland Ave.

call 630-505-0233 to register

<http://www.napervillefhc.org/classes.htm>

02 MAR 2002 - 9AM-3:45PM

DuPage County Genealogical Society 27th Annual Conference

Four lecture periods with a choice of three speakers each period and a sit down lunch are included in your fee. You may register online (using PayPal) or by mail.

For Details: <http://www.dcgsg.org/wrkshp02.html>

02 MAR 2002 - 1:30 PM

What's New at the Newberry Library?

Rhonda Frevort

Chicago Genealogical Society

at the Newberry Library

<http://www.chgogs.org/calendar.html>

05 MAR 2002 - 9:30AM

The South Pacific during World War II - 1943 to 1946

Arthur Frech

Elgin Genealogical Society

Gail Borden Public Library

<http://www.elginarea.org/egs/>

06 MAR 2002

Research in Illinois

Deanna Spingola

Naperville FHC, 1320 Ridgeland Ave.

call 630-505-0233 to register

<http://www.napervillefhc.org/classes.htm>

07 MAR 2002 - 7PM

Are There Leprechauns in your Family?

Kathy O'Leary of Oak Park Public Library

Tinley Moraine Genealogist

at the Tinley Park High School

6111 W 175th Street

09 MAR 2002 - 10:30AM

TMG (The Master Genealogist)

User Group Meeting

Schaumburg District Library, 130 S. Roselle Road

<http://www.rootsweb.com/~ilcaggni/>

09 MAR 2002 - 2PM

POINTers in Person Chapter #27

Italian Genealogy Group

Schaumburg District Library, 130 S. Roselle Road

<http://www.rootsweb.com/~itappcnc/>

12 MAR 2002 - 7PM

Oral Interviewing - Bob Allen

Fremont Library in Mundelein

Lake County Genealogical Society

<http://www.rootsweb.com/~illcgs/meetings.htm>

14 MAR 2002 - 7:30PM

The Civil War (presented in costume)

David Nordin

Fox Valley Genealogical Society

Naperville Municipal Center

<http://members.aol.com/fvgs1/index.html/>

Other Group Events

14 MAR 2002 - 7PM

In Search of Anna's Prayer-Song: Researching Mennonite Ancestors at Home and Abroad

Marti Swanson

McHenry County Genealogical Society

<http://www.mcigs.org/>

Woodstock Public Library

414 Judd Street, Woodstock

16 MAR 2002 - 10AM

"Why Did They Leave? A Look at Life in the 17th & 18th Century British Isles"

by Kathleen Pickens

BIGWILL, Grace Lutheran Church, Richmond, IL

<http://www.rootsweb.com/~wiilbig/meet.htm>

17 MAR 2002 - 2PM

"How to Use Family Tree Maker"

by Franklin Mills

Co-sponsored by the Jewish Genealogical Society of
Illinois and the Wilmette Public Library

at the library, 1242 Wilmette Avenue

<http://www.jewishgen.org/jgsi/#meetings>

18 MAR 2002 - 7PM

Pomeranian Research

Ron and Elaine Kraft

Zion Genealogical Society

<http://nsn.nslsilus.org/wkxhome/zion/index.html>

Beach Park Village Hall

11270 Wadsworth Rd, Beach Park

5-6 APR 2002 (REGISTER BEFORE MARCH 15TH)

Ethnic Illinois

featuring Dr. George Schweitzer

Illinois State Genealogical Society

Spring Conference

William Tell Holiday Inn, Countryside

[http://www.rootsweb.com/~ilsigs/fallconf/
spgcnf.htm](http://www.rootsweb.com/~ilsigs/fallconf/spgcnf.htm)

06 APR 2002 - RICHMOND, INDIANA

Indiana Genealogical Society

Annual Conference

Holiday Inn, Richmond

<http://www.IndGenSoc.org/conference.html>

20 APR 2002 - 8:30AM-3:30PM - \$45-\$60

Michael John Neill

Beyond the Courthouse Door

Newberry Library, Friends of Genealogy

<http://www.newberry.org/nl/genealogy/L3gfriends.html>

Chicagoland Family History Centers

Naperville FHC News (DuPage, Kane Counties)

1320 Ridgeland Road

Ridgeland and Naper Boulevard

1-630-505-0233

Hours: Tues.-Thurs. 9:00am-9:00pm, Fri.-Sat.

9:00am-4:00pm

Closed Sunday, Monday

Another large film reader and another computer are being added. Visit website for list of short-term, long-term films and book holdings at <http://www.NapervilleFHC.org>. You can also order a film using the form on this site and mailing it in.

Schaumburg FHC News (Cook County)

1320 West Schaumburg Road

1-847-885-4130

Hours: Tues.-Thurs. 9:00am-9:00pm

Fri.-Sat. 9:00am-1:00pm

Closed Sunday, Monday and Friday

Closed: July, Halloween week

weeks over Christmas & New Years

Always call to confirm hours

This FHC has new extended hours, see above. The best time to come is during the 4:00pm-7:00pm timeframe as this is a light time at the FHC. This FHC has a high concentration of Scottish films in its extended collection. The new edition of the book, The Source, is on the shelf as well as the CD, The Great Migration Begins Immigrants to New England 1620-1633. There are new educational video films for PAF (all experience levels) and Ancestral File which may be viewed onsite. If you are an experienced genealogist and would like to assist our patrons, please volunteer to work at the FHC. Ask at FHC for info.

Westchester FHC News (Cook, DuPage County)

1550 Haase

1-708-562-9688

Tues. 10:00am-1:00pm

Wed. 7:00pm-9:00pm

Sat. 10:00am-1:00pm

Closed Thursday-Monday

This FHC has added Saturday hours to its schedule, see above. Call ahead to verify hours especially during bad weather.

One of Those Freaky Genealogical Coincidences...

by Larry Olson

I am a Minnesotan by birth. My family arrived from Norway and Germany in the late 1800's to settle in Minneapolis. They rarely moved out of the Twin Cities, except for a few strange birds (like me). My wife and I happened to land in the NW suburbs of Chicago as something of an accident. We were moving from Virginia for a job change. I was attending a class in Buffalo Grove, she was house hunting, and we stayed at the old Arlington Park Hilton. We liked the NW suburbs, and ended up finding a townhouse in Mt. Prospect.

Despite living in Chicago, I have had little use for Illinois genealogical records. I can count the number of relatives who have lived in Illinois on one hand: me, my uncle, a great-uncle, and a 1st cousin twice removed, all on my mother's side. The distant cousin lived and died, married but childless, in Champaign. My uncle and his family still live in Glenview.

My great-aunt said her brother (John Johnson) lived in Lake Bluff and was buried in a mausoleum there in 1971. He'd abandoned his first wife and son years before, remarried and left for Chicago and not much else was known about him. I was recently inputting 20+ years of accumulated research on my mother's family and decided to finally learn more about Great Uncle John. I wrote the Lake County Courthouse and got his death certificate. As it turns out, although he lived in Lake Bluff at the time of his death, he was buried at Memory Gardens in Arlington Heights! It's on the main road (Euclid Avenue) not 5 minutes and 1.35 miles from where we've lived in Mt. Prospect for the past 16 years! Even more ironic is that I pass his crypt at least twice a month to attend CAGG-NI and TMG meetings!



If you're interested in submitting an article or two to the newsletter, contact us at

CAGG_NI@Yahoo.com

February Puzzler:

Can you save keying strokes (data entry) from one medium to another? What other shortcuts are possible/available?

February Puzzler Answer

Other shortcuts are: CTRL+A highlights (selects, does not copy-only selects) everything within the current file/document/spreadsheet (The "A" means all.) CTRL+Z backsteps one operation, undoing the previous step. CTRL+X deletes highlighted text, copying it to "clipboard" ready to be pasted elsewhere (X means cross out). These tend to be universally accepted and work from one software package to another. Try all of these keystrokes in any software you use to see if they work. Sometimes they will and sometimes they won't. Have you ever wanted to take back a move in solitaire? Try CTRL+Z. It works in my version of the game.

There are three steps in accomplishing this: select, copy and paste. By highlighting information, you are selecting what you want to copy. Place the cursor at the beginning of text, move through the text to the end of what you want copied, highlighting as you go. Depressing CTRL and "C" simultaneously will copy the highlighted text to something called a "clipboard" from which it can later be retrieved. You can cut from a spreadsheet and paste into a word processing document. Switching to the second package, move the insert point to where you want to paste, depress CTRL and "V" simultaneously which retrieves the clipboard and inserts it at the cursor position. The way I remember these keyboard shortcuts is: CTRL+C with C meaning copy, CTRL+V with the "V" acting as an arrow meaning right here.

Photo Tip

submitted by Pat Weishauss

From Ancestry Online Daily Newsletter 1/28/2002:

When I want to identify people in a photo, I lay a piece of tracing paper over the top and note their identities there, rather than on the back of the photo. The tracing paper can be folded back to view the picture, and folded down to find out whom it is. This protects the photo and makes it easy to correct if I have misidentified anyone. (Writing on the back of a photo causes it to eventually bleed through and ruins the picture.) I have also used this method to send photos to relatives so they can identify the people they recognize and mail the tissue paper back to me, keeping the photo.

Shirley Hirschfeld