

## Web Sites You Should Know About

In the President's Letter

Page 3.

## Makin' Copies

By Christine L. Clark

Page 5.

## In The Electronic Section

Tool Tips for  
The Master Genealogist  
by Beverly Levine Smallwood

Page 8

**New Feature!**  
CAGG-NI Quick Tips

Page 9

June 15, 2002

## Creating Your Own Web Page

PRESENTED BY VIRGINIA JENKINS



If you are like most genealogists today, you have probably spent untold hours in front of a computer screen looking at other people's web sites. Finding a site that gives information about ancestors that might possibly be yours is a great way to connect to others with whom you might share research. But what if you could have your own site so that others can find you! Yes, you can create a web site of your own. In this presentation we will discuss what you might want to include on your site, hints on how to arrange your information, and most importantly, how to create a document that can be read by your browser and displayed as a web page complete with pictures, links, and formatted text (all about your ancestors, of course.)

Virginia Jenkins has been working with computers off and on since the 1960's, both as a user and as a programmer, and has been involved with genealogy for at least 25 years. She has developed web sites for her business and her genealogy, and is on the web site committee at her church. She is currently owner of **MicroManager Software Services** where she writes software to help libraries manage their periodical collections.

July 20, 2002

Trust Your Research to



BEVERLY LEVINE SMALLWOOD

Our CAGG-NI President will demonstrate Bygonex, a Basic Genealogical Note-Keeping System to organize your research notes and logs.

August 17, 2002

Tips and Tricks to  
Stretch Family Tree  
Maker

DAN NIEMIEC

Dan will show how to make the most use of Family Tree Maker to improve custom reports and to help organize your research. Even if you're not a FTM user, you can apply these techniques to your software program.

# May Meeting Notes

by Anne Jacobs

## Map Maker, Map Maker, Make Me a Map

Maps are such interesting things. They tell stories all by themselves. Much insight can be gained into our lives and that of our ancestors.

Chris took us on a journey into the world of maps and how we can use them to learn our ancestor's story as well as tell our family story.

**Chris Kite's** presentation started by harking back to a previous program, DNA Molecular Genealogy. One of the first Internet links he had for us was Brigham Young University's update on the DNA project. The site has maps of gene migrations. This will show how various lines began to populate the world.

Chris showed that knowing the topography of an area can explain the route our migrating ancestors took. Or, studying topography will give us clues on where to look for their next move.

Some of the maps Chris selected depicted political developments such as the Principal Seats of War in Europe and Napoleon's Army in Russia. One interesting map showed Poland's borders over the years. At one time, Poland encompassed much of the Baltic states.

Another map showed how long it took to travel across the United States at various times in US history. For instance, it showed that in the early 1800s, you could only travel a short distance from New York City in one day. Once the railroads opened the "frontier", you could get half way to Chicago in the same time. Airplane travel changed this map again. These developments show much about the life of our ancestors.

Chris also showed a map he had recorded the location of his ancestors. Starting with a map of his ancestor's homeland, he "updated" the map with their surnames showing how close/far various lines of the family resided. Visual depictions like this help tell a family's story in an interesting way.

This presentation gave me some ideas of how I could use maps to add "meat to the bones" I have been collecting. It also gave me some web sites to start with. A copy of the meeting handout is included in this newsletter.

**Harold and June Bodinet** surprised us with a rhubarb cake made with rhubarb from their own garden. Delicious!!! Others also contributed, including **Paul Cord**, **Lynn Haider** and **Harold Bodinet** managed the kitchen and coffee making. Thanks!



## CAGG-NI Fund Raiser

### Shop & Share

Our next Shop & Share days are July 1st through the 3rd. You may follow this link to print out as many coupons as you require. <http://www.rootsweb.com/~ilcaggi/shops2h.htm> We will be distributing printed coupons at our meeting this month as well. All you need do is shop at Jewel-Osco on one of our three assigned dates, then sign and turn in coupon as you check out. The cashier will record the total of your purchases. Once all the coupons are collected and tallied, Jewel will contribute 5% of the total to **CAGG-NI**. Please give coupons to your family, friends, co-workers, and neighbors. The only caveat is that the coupons may not be distributed in or near a store.

# President's Letter

I'm baaack! I was unable to attend last month's meeting because I was at the National Genealogical Society conference in Milwaukee. What a great way to get your batteries charged, as it were! There were topics covering the full spectrum of experience, not to mention the exhibit hall. Since it was close to home, I ran into many familiar faces, including many **CAGG-NI** members. Of course, I spent a lot of time in the exhibit hall at the TMG booth. I got a chance to see the newest version in action, a little less than a week before its release.

As you know from Anne's email, TMG version 5 was released on May 22nd. **WOW!** I look forward to exploring all features and enhancements. Since the initial release is missing some features, I don't expect all TMG users will make the switch right off the bat. You'll find an article elsewhere in this newsletter written primarily about version 4, but with some version 5 instructions for those who have already made the leap.

Here's a couple of web notes:

The Illinois State Archives posted the Illinois State-wide Death Index 1916–1950 on their website. The web site notes that you may order copies of original death records from 1916 through 1947 from the Illinois State Archives online request form, but death certificates after 1947 should be directed to the Illinois Department of Public Health. I would suggest, however, that ordering from the county would probably be less expensive, depending on the county. Find it at: <<http://www.cyberdriveillinois.com/departments/archives/genealogy/forms/idphdeathsrch.html>> or check out their other databases at: <<http://www.sos.state.il.us/departments/archives/databases.html>>.

The National Archives gave their website a complete overhaul. They have expended a great deal of effort to make the whole site easier to use. There are links to various other sites, online articles, and links to "printer friendly" page layouts. I particularly appreciate the Prologue articles now online. Take a minute to explore <[http://www.archives.gov/research\\_room/genealogy/index.html](http://www.archives.gov/research_room/genealogy/index.html)>.

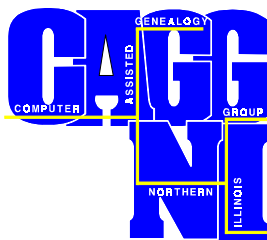
The Census Bureau posted a 149 page booklet in, you guessed it, pdf format. Review Measuring America: The Decennial Censuses From 1790 to 2000 at <<http://www.census.gov/prod/2002pubs/pol02->

[ma.pdf](#)>. There are images of many of the various forms and a brief review of the questions and instructions given to the enumerators with emphasis on the earlier years. You'll want to supplement this with the more detailed enumerator instructions posted at IPUMS USA: <<http://www.ipums.umn.edu/~pipums/voliii/tEnumInstr.html>>.

Have you run across any interesting sites lately? Drop me a line. I'm also waiting for your contributions, large and small, to the library database. If you're reading this on line, and you should be, I'm just one click away (click on my name).

See you soon,

*Beverly Levine Smallwood*



## Officers

President	<b>Beverly Levine Smallwood</b> <a href="mailto:caggni_bev@yahoo.com">mailto:caggni_bev@yahoo.com</a>
VP/Program Director	<b>Patricia Weisshaus</b> <a href="mailto:PatJW28@interaccess.com">mailto:PatJW28@interaccess.com</a>
Financial/Membership	<b>Henry (Chip) Douglas</b> <a href="mailto:CDouglas1@ameritech.net">mailto:CDouglas1@ameritech.net</a>
Promotion/Publicity	<b>Rick E. Sommer</b> <a href="mailto:RESommer@aol.com">mailto:RESommer@aol.com</a>
Acting Secretary	<b>Mary Sparks</b> <a href="mailto:mebreslin98@Yahoo.com">mailto:mebreslin98@Yahoo.com</a>
Newsletter Editor	<b>Jim Cottrell</b> <a href="mailto:JimboDeuce@Yahoo.com">mailto:JimboDeuce@Yahoo.com</a>
Refreshments/Greeters	<b>Janice Wasmer</b>
Web Master	<b>Robert Pulse</b> <a href="mailto:ROPulse@aol.com">mailto:ROPulse@aol.com</a>
Computer Mentors	<b>Ken Cramer</b> <b>Anne Jacobs</b> <a href="mailto:Ancestorseeker@attbi.com">mailto:Ancestorseeker@attbi.com</a> <b>Robert Pulse</b>
Genealogy Mentors	<b>Larry Olson</b> <b>Geneva Shay</b> <b>Patricia Weisshaus</b> <a href="mailto:PatJW28@interaccess.com">mailto:PatJW28@interaccess.com</a>

# Chicagoland Family History Centers

## Schaumburg FHC News (Cook County)

1320 West Schaumburg Road  
1-847-885-4130

Hours: Tues.-Thurs. 9:00am-9:00pm,  
Sat. 9:00am-1:00pm

Closed Sunday, Monday and Friday  
Closed: July, Thanksgiving week,  
2 weeks over Christmas & New Years  
Always call to confirm hours

This FHC has really expanded its CD collection. It now has all the CDs offered by Salt Lake City's CD holdings. Part of this acquisition is all the Pedigree File CDs. An Internet connection has been planned for the FHC and will soon become active. There will be a 2 hour limit during busy times.

## June Puzzler:

Can I rotate the axis of my Excel worksheet so the rightmost row becomes column headings? (Rows are numbered down the left hand side and columns are headed by letters in a spreadsheet.)

## June Puzzler Answer:

Select the rows you want to make into column headings. This is accomplished by clicking the first row, hold down the right mouse button and move down to the last item of interest. Now the items of interest (cells) should be highlighted. Copy this selection by either using the "copy" on the Edit menu or by clicking on the "copy" icon on the toolbar. Select a cell outside the cells being copied. Under the Edit menu, select "Paste Special". A new dialog box opens. Select the "Transpose" option in this dialog box; then click "OK". The row headings are now column headings. You can clean up your new spreadsheet by deleting the excess area. I used this trick to take a list of documents and make it into a check list of what documents I had obtained for various ancestors. After changing the list into column headings, I started entering ancestor names into the first column and just checked away under the appropriate column headings.

# What's the Buzz?

Collected by Anne Jacobs

CAGG-NI's newsletter contains links to Internet sites and is not responsible for the content located on or through, any such third-party sites. You should always take care when downloading and using software from the Internet. Permission has been granted to duplicate in the newsletter.

Hi All,

On Thursday, I was at the National Genealogical Society's conference where I heard David Rencher's presentation on "Up-to-Date in SLC: What's Happening at the FHL?" Until two weeks ago, Mr. Rencher was the director of the FHL in SLC.

I thought you might be interested in some of the information he gave us, and I apologize to those of you who will get this message twice because you are on both of the mailing lists I am sending this to.

LDS is currently filming 4,000 rolls of microfilm per month. There are 240 cameras currently filming in 44 counties.

They are working on how to convert records from microfilm to digitization so the information can get to the public faster and more conveniently. They are now filming information up to 1930. April, May, September, and October are the peak times at the FHL.

They have added a computer with a CD burner that can burn images from microfilm to a formatted CD at the FHL. They have 3 more (if I remember correctly) waiting to be set up.

People have requested that a particular location's records be filmed. Mr. Rencher said what they look for when they decide to film is, if the depository has a large collection, and if they can be at the depository for weeks or months for one continuous period because of the time it takes to set up and breakdown the equipment.

Some statistics: the FHL was established in 1894, the IGI started in 1969, in 1964 the first FHCs were established.

They have just released Pedigree Resource file disks #36 - #40. They were selling them at the conference for \$20.

If you want to contact the FHL, their e-mail address is <mailto:FHL@LDSCHURCH.org>.

I asked Mr. Rencher when they were going to distribute a new catalog on CD. He told us that they were selling them at the FHL booth at the conference. Naturally, we all went there only to find out that they were not selling them. We were told that it would probably be another two to four weeks.

Now for the bad news:

I recently received a message on a mailing list that said that LDS was Soundexing the 1930 census. I asked Mr. Rencher if this was true. He said, "No." He also said that they would never just Soundex something - if they were going to do anything, they would do an index. Also, he said that after doing the 1880 census, they learned that they never want to do another census.

Sandra Trapp

# Makin' Copies

By Christine L. Clark

Two of the best places in the Chicago area to get genealogical data are the Newberry Library and your local LDS Family History Center (FHC). Both have magnificent collections, which are readily available to the public, but both have copying rules.

The primary goal of the Newberry Library rules is to preserve the actual original material. Staff must copy anything in paper format. Works that are too fragile will be microfilmed and not photocopied. They will not photocopy anything that they believe will be damaged by photocopying. The researcher can copy from microfilm or microfiche. Costs start at 25 cents per page and go up from there. The Newberry states that they will only reproduce copyrighted materials with the principle of "fair use". They do not define what they believe to be fair use. I explained the principle of fair use in the first article of this series (see the April newsletter and below). The Library also warns that you assume all responsibility regarding copyright of library material. However, they go on to state that if you need more than 50 photocopies from one book or film that they will make a you a microfilm or reader-printer copy.

I received an e-mail in which a representative of the Family History Centers stated that they interpreted the fair use "clause" to be 10% of a record or 10 pages whichever is the least amount. They have placed copyright notices on all of their films. They also note that copies made by digital camera must abide by this rule. Similar to the Newberry Library, they warn that FHC patrons alone are responsible for copyright actions taken by the holder. Let's review the principle of fair use.

**Fair use is a principle of law and not a "clause"**. The Church of the Latter Day Saints may interpret the fair use principle as 10% or 10 pages but that is not how the courts interpret it. The fair use principle allows limited copying of copyrighted works for the purposes of commentary, criticism, news reporting, teaching/education and parody.

There are several factors that the court looks at with regard to potential copyright violations.

**First**, the character of the work is examined. Is it a creative work? In this case, no. These microfilms are copies of factual data (not including copyrighted books they microfilmed) such as names and dates. This type of data is considered public information and cannot be copyrighted. Therefore, the principle of fair use does not apply. The format in which the data is presented, however, can be copyrighted. An example would be if I decided to make a "compilation" of the records. The format in which I present the compilation can be copyrighted since it was through my creative endeavor

ors that I designed the format. It is possible that the FHC could argue that the way they photographed the records and then microfilmed them is creative and thus, copyrightable.

**Second**, the court will determine whether you (the copier) are going to use the copies for commercial, educational or historical purposes. In this case, I am assuming that most FHC patrons are making copies for genealogical/educational/personal purposes. Placing this within the principle of fair use.

**Third**, the court will look at how much of an original work is being copied? Not really relevant in this case but for the sake of discussion... Generally, you should only be copying a portion of a film and not the entire film. Note that the courts have not set a 10% limit. This would be a difficult determination in most cases and is very fact specific. Once again, only copying a portion of the work (film) places this use within the principle of fair use.

**Fourth**, the court will determine just how much your copies will financially affect the marketability of the original work. Making copies of original factual records for genealogical purposes and not commercial purposes should have no financial impact on the FHC's continual rental of these films. Particularly since they don't sell these films. Taking all of these factors into consideration, making copies from these films will most likely be considered fair use even if you copied more than 10% of the film.

I have not seen this 10% rule in writing at the FHC that I patronize nor have I seen it enforced. In order to enforce this rule, the FHC would have to maintain a frame/picture tally for every film and then determine 10% of the total on thousands of films. I do not believe that these numbers are contained in their records.

Be aware that I am not advising you to copy entire films nor am I suggesting that it's a good idea to "fight" the Newberry or FHC rules. The purpose of this article is to advise you of important rules and the practical application of the principle of fair use. As I stated in the first article, always ask yourself why you are making the copies and keep these fair use factors in mind. In addition, remember to respect the rights of the author or creator.

This article discusses general legal issues surrounding copyright and is not intended to give any specific legal advice. The opinions in this article are solely my own and are not the opinions of the Computer Assisted Genealogy Group of Northern Illinois.

# Other Group Events Compiled by Beverly Levine Smallwood

**27-29 JUN 2002 - SPRINGFIELD, ILLINOIS**  
**East to West (Midwest, That Is)**  
Palatines to America National Conference  
<http://www.palam.org/events.htm>

**30 JUN - 07 JULY 2002 - DES MOINES, IOWA**  
**33rd Annual International  
AHSGR CONVENTION**  
See AHSGR website for details.  
<http://www.ahsgr.org/calendar.htm>

**08-11 JUL 2002 - SPRINGFIELD, ILLINOIS**  
**Illinois State Genealogical Society's 8th  
Annual Genealogical Institute of Mid-  
America**  
LLOYD BOCKSTRUCK, SANDRA H. LUEBKING,  
MICHAEL J. O'NEILL, PAUL MILNER  
<http://www.rootsweb.com/~ilsgs/gima/gima1.htm>

**09 JUL 2002 - 7PM**  
**FREMONT LIBRARY IN MUNDELEIN**  
**Citizenship and Your Immigrant Ancestor**  
BY MARIAN RICHTER SCHUETZ.  
Lake County Genealogical Society  
<http://www.rootsweb.com/~illcgs/meetings.htm>

**09 JUL 2002 - 7:30 PM**  
**Probate - It's more than just a will**  
CAROL KNIGGE  
Schaumburg Township District Library  
Genealogy Group

**11 JUL 2002 - 6PM - NEWBERRY LIBRARY**  
**The Children Are Coming:  
A History of Orphan Trains**  
Newberry Friends of Genealogy (call 312-255-3510)  
[http://www.newberry.org/nl/genealogy/  
L3gfriends.html](http://www.newberry.org/nl/genealogy/L3gfriends.html)

**11 JUL 2002 - 7PM \$5 TO NON-MEMBERS -**  
**McHENRY COUNTY COLLEGE**  
TONY BURROUGHS  
**Mysteries of the Soundex**  
McHenry County Genealogical Society  
<http://www.mcigs.org/MeetingNew.htm>

**13 JUL 2002 - 10:30AM - SCHAUMBURG LIBRARY**  
**TMG (The Master Genealogist)  
User Group Meeting**  
<http://www.rootsweb.com/~ilcaggni>

**13 JUL 2002 - 2PM - SCHAUMBURG LIBRARY**  
**POINTers in Person**  
**Chapter #27 - Italian Genealogy Group**  
Geneva Shay presents "How To Search Cemeteries"  
<http://www.rootsweb.com/~itappcnc>

**13 JUL 2002 - DES MOINES, IOWA**  
**Black Roots: Tracing the Family Tree**  
TONY BURROUGHS  
Iowa Genealogical Society  
[http://www.iowagenealogy.org/Conference/  
2002Burroughs/020712\\_tb.htm](http://www.iowagenealogy.org/Conference/2002Burroughs/020712_tb.htm)

**13 JUL 2002**  
**Whitewater, Wisconsin**  
**German Interest Group**  
**Wisconsin Workshop on German States**  
<http://www.rootsweb.com/~wigig/workshop.html>

**14-18 JUL 2002 - DEARBORN, MICHIGAN**  
**International Roots Conference**  
<http://rootsconference.com/Index.html>

**15 JUL 2002 - 7PM - BEACH PARK VILLAGE HALL**  
**Passenger and Immigration Lists Index**  
DEBBIE BLUETT  
Zion Genealogical Society  
<http://nsn.nslsilus.org/wkkhome/zion/index.html>

**19-21 JUL 2002 - SASKATCHEWAN, CANADA**  
**2002 FEEFHS Convention**  
**Discovering Our Links in Europe**  
<http://www.feefhs.org/conf/02reg/02reg-hp.html>

**31 JUL 2002 - NAPERVILLE FHC**  
**Preserving Our Family Photo Heritage**  
BY JANET SOLIS  
To register for this class: email [deanna@spingola.com](mailto:deanna@spingola.com)  
or call the FHC at 505-0233

**04-09 AUG 2002 - TORONTO**  
**IAJGS International Conference on Jewish  
Genealogy**  
<http://www.jgstoronto.ca/Conferences2.html>

**07-10 AUG 2002**  
**Federation of Genealogical Societies (FGS)**  
Ontario Convention Center, Ontario, California  
<http://www.fgs.org/2002conf/FGS-2002.htm>

# Other Group Events *Compiled by Beverly Levine Smallwood*

---

**28 SEPT 2002 - 8AM-4PM**

Fox Valley Genealogical Society Fall Conference

## **Unlocking Ancestral Mysteries**

HENRY Z "HANK" JONES

<http://members.aol.com/fvgs1/worksh01.html/>

Grace United Methodist Church

300 E. Gartner Road, Naperville

**04-06 OCT 2002**

## **Polish Genealogical Society**

### **2002 Conference - Basics & Beyond**

Ramada Inn, 6600 N. Mannheim Rd., Rosemont

**03-05 OCT 2002**

## **Iowa Genealogical Society**

### **Annual Conference**

Marshalltown, Iowa

### **Your Elusive Ancestor**

SHARON DEBARTOLO CARMACK

[http://www.iowagenealogy.org/Conference/2002Fall/fall\\_main.htm](http://www.iowagenealogy.org/Conference/2002Fall/fall_main.htm)

---

## **Meeting Handouts for Map Maker by Chris Kite**

Edu update, goal to map of gene migrations <http://www.molecular-genealogy.byu.edu>.  
Europe 1500's & 1600's <http://www.ancestry.com>

**Principal Seats of War in Europe, I. 1618-1660 & 1700-1721**

From The Historical Atlas by William R. Shepherd, 1923

<http://www.1uptravel.com/worldmaps/history-europe49.html>

<http://www.ancestry.com>

**Polish Borders - Family Tree Dec 2000**

**Napoleon's Army in Russia - use ideas for family migration?**

**Rhine River Valley - Kiser and other lines - <http://www.calle.com/world/>**

**English Colonies - <http://www.ancestry.com>**

**Shenandoah Valley 1716-1780**

<http://www.harringtons.org/documents/virginia/HarringtonInVirginia070998.htm>

**UT Library Online Migration from Eastern US - <http://www.lib.utexas.edu/maps/histus.html>**

**Wilderness Road And Kentucky 1774-1785 - Drawn under supervision Samuel Cole Williams,**

**Pg #62 Enlargement, showing Rivers, Towns, Villages, Forts & Cumberland Gap.**

[http://www.rootsweb.com/~usgenweb/sc/sca\\_maps.html](http://www.rootsweb.com/~usgenweb/sc/sca_maps.html)

**US Migration, Rates of Travel, Slavery & War - <http://www.ancestry.com>**

**Migration from VA to IL, IA, & MO - farms & great-great-grandmother's letter**

**Immigration Ships & Artwork - <http://www.kinships.com>**

**County Boundary Historical Atlas - <http://www.goldbug.com> - purchase software**

**Topographical Maps - <http://www.topozone.com>**

**National Geographic - <http://www.nationalgeographic.com/xpeditions>**

**Surnames - <http://www.hamrick.com/names>**

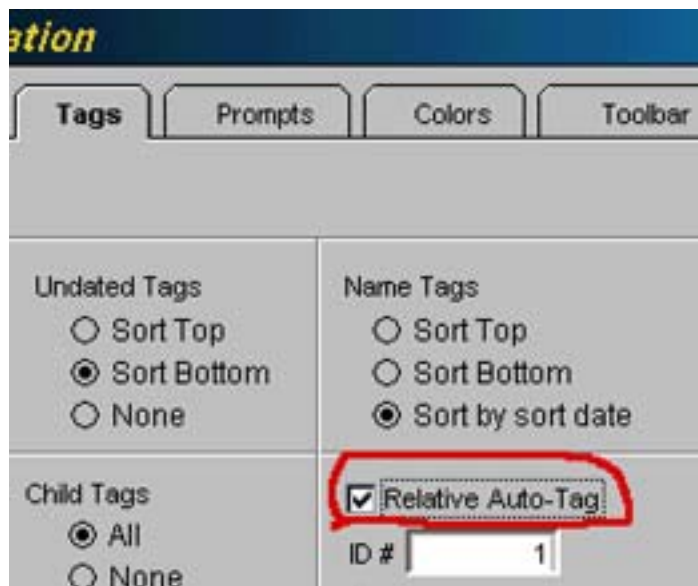
<http://www.cyndislist.com>

# Tool Tips for The Master Genealogist

by Beverly Levine Smallwood

## Calculate Relationships Automatically

TMG provides a convenient way to show relationships between individuals. The Relative Auto-Tag displays the relationship of any person you view to a selected person (usually you). In version 4.0x, it is set from the Tools menu.<sup>1</sup> Go to Options and click on the Tags tab, then place a checkmark next to the Relative Auto-tag and enter the ID number of your target individual.



You will receive a warning that this could slow your system down, so if you have an older system you might want to reconsider. Click OK to save the change. You will now see a tag at the top of the person view that tells you the closest blood relationship between the person displayed and the target person. Now when I click on cousin Lee, it tells me that he is my 1st cousin 1 time removed. This can be informative as you are entering data.

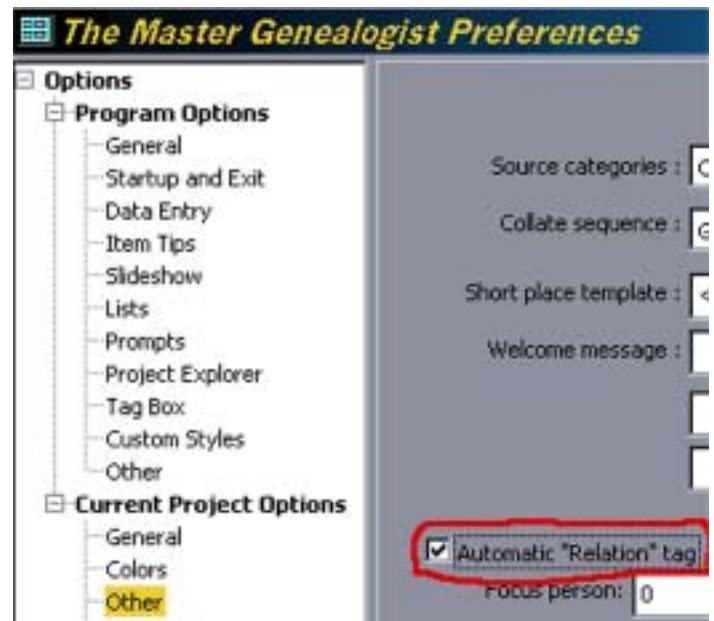
Of course, you can always calculate the relationship between any two individuals with the Relationship Calculator, accessed through the Tools menu or by pressing CTRL+R. Enter the two ID numbers and click on Calculate. It shows the relationship between the two. If there is a blood relationship, you may click on Progenitors to see all the common ancestors between the two.

The Relative Auto-tag is for display purposes only; it does not print on reports. If you want a relationship report, create a Kinship report in Custom Report Writer. This report allows you to select a target individual, or prompt for the ID number each time it is generated. You may decide on the "Options 1" tab whether to include ancestors, descendants, cousins, or spouses of relatives. The number of relationships to calculate affects both the length of the report and the time it takes to generate it. Also, really distant relationships like 5th cousin twice removed are somewhat meaningless to the non-genealogist so it is best to limit the number of generations.

Another report to consider is the Relationship Chart. This one creates a box chart to illustrate the relationship between any two individuals from their common ancestor. It starts with the common ancestors at the center top and drops down through the generations on the right and left with connectors describing the relationships (siblings, 1st cousins, 2nd cousins, etc.) to the two target individuals. This is a good way to demonstrate relationships to the non- or neo-genealogist who may not understand the meaning of third cousin twice removed.

Relationships. They're what genealogy is all about.

<sup>1</sup> In version 5 it is set in File > Preferences > Current Project Options, Other



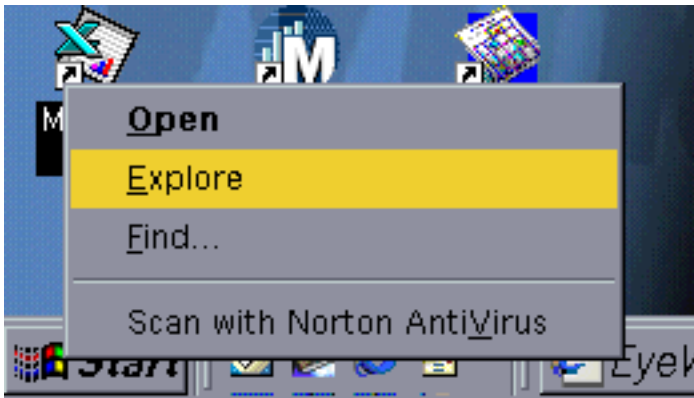
# CAGG-NI Quick Tips

## New Feature This Month

**CAGG-NI Quick Tips** is a new feature, by CAGG-NI members, for CAGG-NI members. Just a few 'Tricks of the Trade' to make your surfing life easier. If you have a tip for our members, why not contact us and we'll feature it in a future issue? You can find the newsletter editor by clicking: [HERE](#).

## Opening Windows Explorer

Here's a quick and easy way to open your Windows Explorer without navigating through countless menu options and minimizing a lot of applications. Just **right** click on your start button and choose 'Explore'. Your Start button is always visible so you're never more than two clicks away from Windows Explorer! Try it!

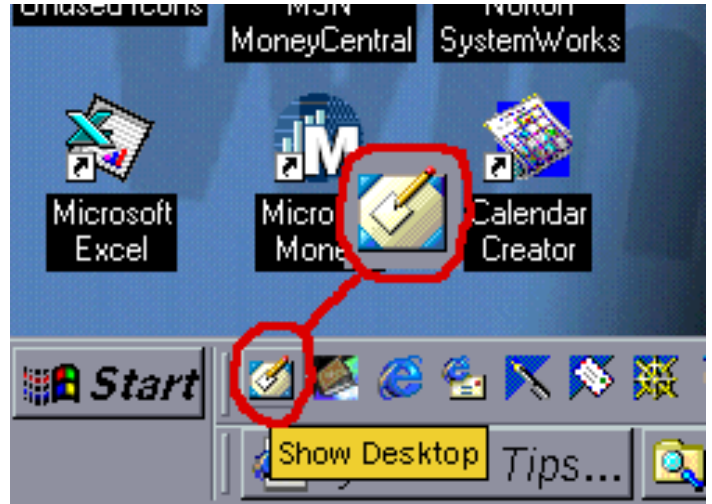


## Did You Know . . .

... that if you are using Microsoft Internet Explorer, you can use your space bar to page down on a web page?

## Show Desktop

Have you ever had too many windows open and wanted to get to your desktop without having to minimize all your windows? Well, there is a quick way to do this. Of course, with windows, there is always more than one way to do things. The fastest way is to click on your 'Show Desktop' icon. This icon is on your task bar to the right of your 'Start' button and looks like a pencil on a desk pad.



Another way is to minimize your windows all at once. To do this, **right** click on an **empty** spot on your taskbar. A menu will pop up from which you can select 'Minimize All Windows'. If you have so many windows open that you can't find an empty spot on your taskbar, you can always right click on the time shown at the extreme right of the task bar. Try it now!

