

Enhance 1930 Census Searches

By Using TMG's Filters,
Accents, And Flags

Beverly Levine Smallwood
Page 2

Establishing A Yahoo ID

by Anne Jacobs
Page 4-5

This article is essential if you wish to receive future copies of the CAGG-NI Newsletter. Be sure to check this out!

CAGG-NI Elects New Officers for 2003

See the Officer listing on page 3 and the November Meeting Notes on page 7 for a complete list of Officers and Committee Chairs.

January 18, 2003

Taking Handhelds To The Library

by Everett Butler

Everett will discuss PDAs and the software available for genealogy enthusiasts.

February 15, 2003

Make A Movie By Putting Your Family on DVD

by Ed Rosenthal

Moving 8mm movies onto the new media of DVD as well as pictures, letters, mementos and keepsakes.

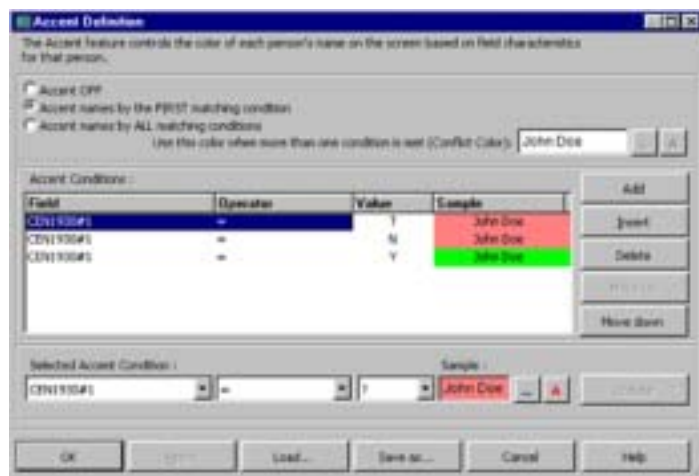


Enhance 1930 Census Searches by Using TMG's Filters, Accents, and Flags

by Beverly Levine Smallwood

Now that Ancestry has put up an index (98% complete) of Illinois, it was time to do some more searches. Up to this point I had been doing my searches on Ancestry.com or on microfilm using the address/enumeration district method. Now it is time to determine what still needed to be done and do those searches. Most of what I am doing in TMG v.5 can be done in v.4 as well, with just a few exceptions.

While still using version 4, I created a Flag called 1930Census with a default value of "?". The other values are "N" for "need to find", "T" to indicate that a research task has been created and a plan formulated for locating the family, and "Y" for "found". I used a List of People report to reset the flag to "N" for people born between 1830 and 1930, eliminating those who died before 1930. As I find people on the census, I reset the flag value to "Y". I then created an Accent scheme to color code my dataset according to the value of the 1930Census flag. In version 5, I can name & save the Accent scheme for use at any time. (see figure 1)



When I'm ready to sit down and do searches, I load my 1930 accent condition and filter the Project Explorer (version 5 only) for 1930Census = N|T. (In version 5, multiple parameters may be selected if separated by a vertical line also known as a pipe. This is the key generally found above the enter key and it looks like a broken vertical line above the backslash "\".) In version 4, you can filter the picklist for a single flag value so you may want to limit your flag values to ?NY and filter for "N". Version 5 also lets me arrange my work area to suit my needs. I have the following windows open: Individual Details, Children, Siblings, Flags, and Project Explorer (linked to the focus individual).

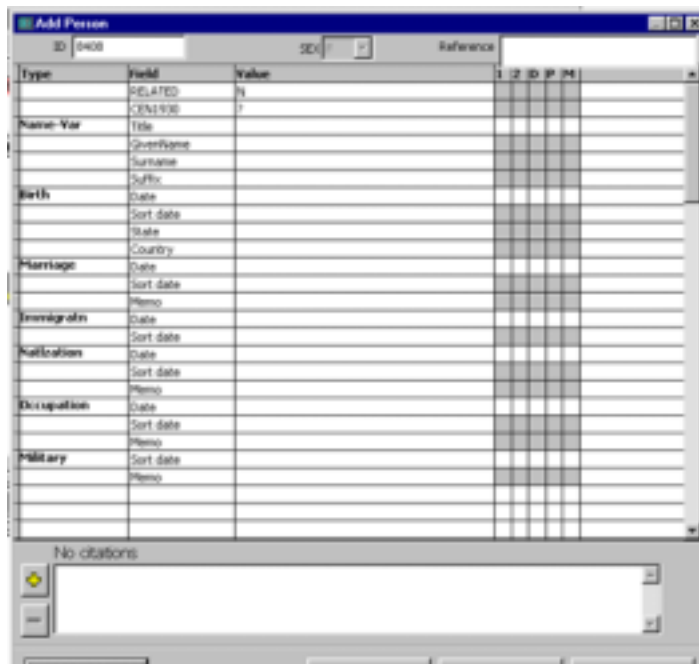
Scanning the list of people I need to find, I skip over those I suspect are living in states that have not yet been indexed. Clicking on the first candidate, it updates the other windows to that person. The colors will show me whether the wife, children, parents or siblings have been found yet. Now I can open Internet Explorer (the Ancestry 1930 census images don't display properly in Netscape 4x), and flip back and forth between the two programs.

After entering the search parameters, and sometimes you have to play with these a bit, you will either get a list of possible matches

or nothing at all. If there are no matches, I don't generally add any tasks since the indexes are not yet complete. If one of the matches leads to the family I am looking for, I take my notes (for whatever reason, I find myself unable to print from Ancestry) then change the 1930Census flag to "Y" for all those who were living in the household. If the possible matches lead to families that are not mine and my family is not found, I add a research task indicating that this film/ed/page/head of household is not my family because ... This will save time when I do the search again another day.

Another possibility is to create tags called 1930census and 1930needed. If you do a search but do not find them, add the 1930needed tag and put the search parameters and negative hits in either the memo field or by adding a research task to this tag. Once you do find them, you can change the tag type to 1930census and delete the negative search details.

Now, for found families, add a source and then add all the new information found on each person in the household. You may be adding new people to the dataset. Version 5 allows you to customize the Add Person Screen to allow you to enter all the details on the census like: birth (est. date, state or country); immigration year; whether naturalized; occupation; and military service. (see figure 2)



While analyzing the census data and making your entries, more research ideas are bound to occur to you. Create a research task right now, while it's fresh in your mind. I tend to specify the source I need to check in the task name and the places the source may be consulted under the keywords. This allows me to pull a list of things to do at a particular library or archive and sort the list by the task name, which generally sorts the same or similar items together.

The last step is the hardest of all. File the census notes or copy.

President's Letter

As I write this column on the day after Thanksgiving, I came to reflect on the genealogical blessings that came our way this year. We twenty-first century genealogists are indeed a fortunate lot. This year brought us the public release of the 1930 census returns. The microfilm was soon being digitized and posted online. Ancestry continues to index *every name* in the 1930 census, not just head of household. In recent weeks, the index for Illinois was made available.

Earlier this year, I wrote articles on different methods of finding people in this un-indexed census. I found perhaps 75% of those I was looking for using those methods. However, there were, and continue to be, people for whom I have no idea where in the world they were living on census day. Some of them may have moved around looking for work and may be found as other states get indexed. Some of them may have been moving at the time and were missed by the census takers altogether.

If you've been putting off the 1930 census because the map method seemed too difficult, no more excuses. Now it is as simple as typing in a name (for those states that have been indexed). For those of you who are not Ancestry.com subscribers, get thee to a library. If you don't know where to go, check the library resource pages on our website to see which local libraries have a subscription.

The other huge census news comes from the Church of Jesus Christ of Latter-day Saints. They completed every name census transcriptions for the 1880 US, 1881 Canadian, and 1881 British census schedules. While these have been available on CD-ROM for the past year or so, they have now been made available online and at no cost.

After a disastrous beginning, the 1901 Census of England is back online at <http://www.pro.gov.uk/>. You may search for free, but must pay to view the census pages and transcripts. A brief review and mention of several software tools to make full use of the site are in Dick Eastman's column dated 9/11/2002 and can be read here: <http://www.ancestry.com/library/view/columns/eastman/6321.asp>. Looking forward to 2003, Ancestry has begun putting the 1891 Census of England online. Like the 1930, it will eventually have an every name index.

Speaking of Dick Eastman, he is no longer publishing his column under Ancestry's sponsorship. His column continues at <http://www.RootsForum.com/>, where you may subscribe for free or pay a small subscription fee for the Plus edition. The Plus edition includes an extra article or two, and arrives without any advertising. The standard edition is free, but contains advertising and is shy those couple of extra articles. I have always found his column to be a valuable resource for all the latest and greatest.

Electronic CAGG-NI Membership

2003 is going to be an exciting year here at CAGGNI. Our website is getting a face lift and will be unveiled soon. One of the things we've been wanting to do is to make past issues of the newsletter available online with a subject index, giving mem-

bers an easy way to access them from any computer but without giving them away to non-members. What we've elected to do is to put them on a newly created yahoo group. Anne explains how to get a yahoo ID elsewhere in this newsletter. Once we have everything set up, all paid members will receive an invitation by email to join this group. You may then opt to get your electronic newsletter as a link in the email rather than an attachment. Those of you with limited email accounts will appreciate that. In time to come, we may find other uses for the members-only group, so watch this space for future developments.

Our December meeting will have taken place by the time you receive this newsletter. The meeting/planning session was switched to December 7th rather than having it just before Christmas on our usual 3rd Saturday. So...

See you in January!

Beverly Levine Smallwood



Officers

| | |
|---------------------|---|
| President | Beverly Levine Smallwood caggi_bev@yahoo.com |
| VP/Program Director | Henry (Chip) Douglas CDouglas1@ameritech.net |
| Financial | Garth Conley G.Conley@Prodigy.net |
| Secretary | Marilyn Alton MAlton735@aol.com |
| Membership | Larry Olson LOlson@mountprospect.com |
| Promotion | Dan Wertz DWertz@attbi.com |
| Publicity | Rick Sommer RESommer@aol.com |
| Ways & Means | Anne Jacobs |
| Newsletter Editor | Jim Cottrell JimboDeuce@Yahoo.com |
| Webmaster | Gerry Czadowski GerryCzadowski@Covad.net |
| Librarian | Otto Knapp OKnapp@Juno.com |
| Historian | Christine Clark clc1040@aol.com |

Establishing a Yahoo ID By Anne Jacobs



As part of CAGG-NI's ongoing effort to be of better service to its members, a Yahoo Group called CAGGNIMembers has been established. This Yahoo Group will be used to distribute the monthly newsletter in the near future. Online distribution of the newsletter also responds to members' request. CAGG-NI will use this group for the following:

- Notice of meetings and other events can automatically be sent based on a calendar without relying on someone's memory
- Easier communication of new found resources can be shared
- Easier distribution of the newsletter

The newsletter content has evolved over the years and this year, an electronic section, only available to members, was added. In addition, many graphics have been added to the newsletter to compliment the many "how to" articles, including this one. All of these features add to the length (size) of the newsletter which can be a problem for some e-mail accounts. Using this new "group" facility, CAGGNIMembers allows you to download the newsletter on your own schedule and frees up space in your electronic mailbox.

The Yahoo Groups facility has many uses including keeping families in touch with each other. After you have been introduced to the site (if you haven't already been), you may start your own group. If you do, you can use the Yahoo ID you create here, for these other groups. You should also explore the existing "public" groups at Yahoo joining as many as you find of interest.

In the near future, you will be invited to join this group. Membership is by invitation only. After receiving the invitation to join the group, you have a number of days to accept the membership. The first step in this process is to create a Yahoo ID for yourself if you don't already have one. You must have a Yahoo ID to join a Yahoo Group.

Before starting this procedure, think of a Yahoo ID which you would like as your own. Below are step-by-

step instructions on establishing a Yahoo ID.

- 1 Go to the Yahoo site: <http://www.yahoo.com>
- 2 Click on the Groups selection.

New!  [Yahoo! Mail Plus](#) - Powerful. Affc

Shop [Auctions](#), [Autos](#), [Classifieds](#), [Real Estat](#)

Find [Careers](#), [Maps](#), [People Search](#), [Persons](#)

Connect [Chat](#), [GeoCities](#), [Greetings](#), [Groups](#), [Ma](#)

- 3 Click on Register.



- 4 Fill out form, a portion of which is seen below. The required fields are Yahoo ID, name, password, residence country, zip code, gender, industry and title. Click on the submit button at the bottom.

Sign up for your Yahoo! ID
Get a Yahoo! ID and password for access to Yahoo!

Yahoo! ID:
(examples: "dairyman88" or

Password:

Re-type Password:

5. If the Yahoo ID you entered is already selected, you will be prompted to select another one until you hit on one which is not in use.
6. You will next get a confirmation screen.

Registration Completed - Welco

We've sent a confirmation message to your Alternate Email Address. Write down your password and the information below.

| |
|-----------------------|
| Your Yahoo! ID: |
| Your Alternate Email: |

Click [here](#) to edit your Marketing Preferences. You will receive about Yahoo! products.

7 You may click on the edit your Marketing Preferences if you would like to select categories to receive e-mail offers or avoid marketing messages. Naturally, most everything is checked as "Yes" so you may want to change these. After changes have been made, click "Continue" each time it is presented unless you want to make more changes depending on what the screen is offering.

8 As a safeguard, an e-mail is sent to the e-mail address you supplied. This technique prevents other people from harassing you by signing you up for accounts and mail lists. You are asked to retrieve this e-mail which contains the confirmation link. Click on the link in the e-mail which will take you back to Yahoo. This confirms your account registration. If the link does not work, there are instructions in the e-mail on copying the verification code and entering it in the slot provided back at Yahoo. You are now registered. Be sure to keep your user name (Yahoo ID) and password handy so you can use it once the invitations are sent for the CAGGNIMembers group.

9 (optional) Click on Group Wizard to see if there are other groups you may want to join.

Welcome,

Yahoo! Groups

| | |
|---|---|
| My Groups You are not currently subscribed to any groups. Check out Join a Group for a directory of all groups. | What is a Group? One email address & we <ul style="list-style-type: none">Share photos & files, plan eventsStay in touch with friends and familyDiscuss sports, health, current events |
|---|---|

Join a Group

Genealogical Computing Workshops

Presented by Michael John Neill

Classes run from 9 am to 3 pm at Carl Sandburg College in Galesburg. Each participant will have their own computer to use during lab times, so space is limited. Registration is \$35 per class. Topics and dates are:

- 08 March – Topics in Family Tree Maker
- 10 March – DeedMapper Software
- 11 March – Computerized Census Research
- 12 March – Library Card Catalogs and WORLDCAT
- 13 March – Using the Family History Library

WebSite

- 14 March – Word for Genealogists
- 15 March – Finding and Using Online Maps, including Sanborn Fire Insurance Maps
- 29 March – Internet Based Genealogy

To receive a complete brochure, contact Mr. Neill by phone, email or US mail:

MNeill@sandburg.edu

1-877-236-1862 (toll free) extension 5337

Michael Neill, Carl Sandburg College, 2400 Tom L. Wilson Blvd., Galesburg, IL 61401

Paint Your Style, Revisited

By Anne Jacobs

As soon as last month's article, Paint Your Style, came out, I got an e-mail from **Everett Butler** with a helpful tip. He pointed out that by double clicking on the tool bar paint brush, the duplicating feature is maintained until you hit the ESC key or click the paintbrush again. So you can use this tool repeatedly without having to reselect it.

That ought to teach us that by reading help on any new "trick" we learn, we might even learn more. Thanks, Everett.

Other Group Events *Compiled by Beverly Levine Smallwood*

09 JAN 2003

Jack Simpson - Newberry Library Overview
Tinley Moraine Genealogists
Tinley Park High School, 6111 W 175th Street

15 JAN 2003 - 7PM - WHEATON

**Deanna Spingola - Effective Research,
Notes & Organization**
DUPAGE GENEALOGICAL SOCIETY
<http://www.dcgs.org/>

16 JAN 2003 - 7:30 PM ARLINGTON HEIGHTS

Modern Census Returns
by CAGG-NI President
Beverly Levine Smallwood
Northwest Suburban Council of Genealogists
<http://www.mtprospect.org/nsgs/>

01 FEB 2003 - 1:30 PM NEWBERRY LIBRARY

CAGG-NI MEMBER DANIEL NIEMIEC
Italian Research In Chicago
Chicago Genealogical Society
<http://www.chgogs.org/calendar.html>

06 FEB 2003

**Matt Figi - Interesting People That I Met
Through Genealogy**
Tinley Moraine Genealogists
Tinley Park High School, 6111 W 175th Street

08 FEB 2003 - 10 AM

TOM SHEPPARD
History of Pullman Community
South Suburban Genealogical & Historical Society
<http://www.rootsweb.com/~ssghs/sscal.htm>

09 FEB 2003 - 2 PM

Jim Klekowski - South Chicago U.S.A.
Polish Genealogical Society of America
<http://www.pgsa.org/meetings.htm>

13 FEB 2003 - 6 PM - NEWBERRY LIBRARY

**Paul Valasek - Tracking Your Polish Ancestors
Via American and Polish Resources**
For inquiries and reservations, call (312) 255-3510.
[http://www.newberry.org/nl/genealogy/
L3gfriends.html](http://www.newberry.org/nl/genealogy/L3gfriends.html)

Workshops & Conferences

04-05 APR 2003- EAU CLAIRE, WISCONSIN
Gene-A-Rama featuring Patricia Law Hatcher
Wisconsin State Genealogical Society
<http://www.rootsweb.com/~wsgs/>

05 APR 2003 - CHESTERTON, INDIANA
Indiana Genealogical Society Conference
<http://www.IndGenSoc.org/conference.html>

05 APR 2003 - 9:30-4:30PM

Early American Research with Eric G. Grundset
LIBRARY DIRECTOR OF THE DAUGHTERS OF THE AMERICAN
REVOLUTION (DAR) LIBRARY IN WASHINGTON, D.C.
Admission to all four lectures, a detailed syllabus, and a
box lunch is \$75; \$65 for DAR members; \$50 for members of
FOG. Inquire about our new FOG member workshop discount.
Reservations are required (312) 255-3510
[http://www.newberry.org/nl/genealogy/
L3gfriends.html](http://www.newberry.org/nl/genealogy/L3gfriends.html)

12 APR 2003 - JOHNSTON, IOWA
JOHN PHILLIP COLLETTA

Iowa Genealogical Society Conference
<http://www.iowagenealogy.org/>

12 APR 2003 - INDIANAPOLIS

**Indiana Chapter Palatines to America
Spring Workshop** featuring Dan Heinemeier
Palatines to America
<http://www.palam.org/events.htm>

28-31 MAY 2003 - PITTSBURGH
National Genealogical Society Conference
<http://www.ngsgenealogy.org/conf.htm>

07-10 JUL 2003 - SPRINGFIELD

Genealogical Institute of Mid America (GIMA)
<http://www.rootsweb.com/~ilsgs/announcement.html>

12 JUL 2003 - WHITEWATER, WI

German Interest Group - Wisconsin - Conference
FEATURING MARION WOLFERT OF SALT LAKE CITY, UTAH
<http://www.rootsweb.com/~wifig/workshop.html>

03-06 SEP 2003 - ORLANDO

**Federation of Genealogical Societies
Conference**
<http://www.fgs.org/2003conf/FGS-2003.htm>

November 2002 Meeting Notes

by Anne Jacobs

Larry Olson presented CYSS, Cite Your Sources Simply among all the other business which was conducted at the November Meeting. We elected new officers, held an early renewal membership campaign with the enticement of a raffle, voted on the changes to the Constitution and Bylaws and received completed member surveys indicating what is desired for next year's programs. We plan to hold an annual Membership Campaign with such a raffle to kick off our renewal drive. One of the most popular items in the raffle was tickets redeemable for 1 hour of mentoring for computers or genealogy. You can be sure that there will be more of these mentoring selections available. For those of you who claimed such a ticket, please send an e-mail to the CAGG-NI mailbox stating what type of ticket was selected and what assistance you would like. This will assist in determining who can provide the kind of help you desire.

We have an equal mix of new people stepping forward among the returning officers. The only slot left open is the Refreshments Coordinator for the first quarter of the year.



Our new officers are:

| | |
|--------------------------|-----------------------------|
| President | Bev Smallwood |
| Vice Pres./Program Chair | Henry (Chip) Douglas |
| Financial Chair | Garth Conley |
| Secretary | Marilyn Alton |
| Membership Chair | Larry Olson |
| Publicity Chair | Rick Sommer |
| Promotions Chair | Dan Wertz |
| Ways and Means Chair | Anne Jacobs |
| Newsletter Editor | Jim Cottrell |
| Webmaster | Gerry Czadowski |
| Librarian | Otto Knapp |
| Historian | Christine Clark |

The bylaws changes were accepted as presented on the web page with the exception of the duties of the officers. These will be removed from the Constitution and Bylaws and moved to another page on the website. This will simplify changing roles and duties as they will no longer require formal updating and filing through a state agency.

Now on to the meeting program. Once again, **Larry Olson** did an excellent job of presenting a topic near and dear to this heart, citations and their content. He presented some general rules for citation, citations basics, suggested some good reference sources for further reading on the topic, as well as some encouraging comments to help those reluctant to dig into this important element of research.

Larry discussed a number of important points like:

What format citations can take in your finished product

- Footnote
- Endnote
- Embedded

What basic elements should be contained in a citation

- Source Title/Name/Subject
- Date created/Time frame/Years covered
- Author/Creator/Originator/Compiler/Publisher
- Specific Reference/Page number/Volume number/Unique Source ID
- General Reference/Collection/Location/Repository
- Notes/Remarks/Comments

Or reduced to its simplest form:

What is it?

Who is it about?

When was it created?

Where was it created?

Where is it now?

So many are busy with other endeavors during the summer, returning to this avocation in the winter, it is good to be reminded of this important facet of genealogy research. As many "living sources" are visited during this busy time of year, knowing how to cite them is important.