

(Continued from Page 48)

24-hour electric service and a municipal water plant. Two banks have stood the test of time and are listed today as tangible assets, attesting the wealth of the community.

The town has about 400 inhabitants and every house is occupied though the demand is not supplied.

A table elsewhere in this magazine should be analyzed. It shows the number of carloads of products produced and shipped from Dalton for the year 1926. Those figures are taken from the reports compiled by the two railroad companies serving the county.

This little story about Dalton would not be complete without the fine word from the pen of Will Maupin, feature writer for the Omaha Bee. His little story about Dalton was published in the Bee on Friday, May 13, 1926, and we are giving it:

Will Maupin's Story

"We spent a goodly portion of Wednesday going through a section of Nebraska that was merely outdoors when we first struck this commonwealth. Now it is the greatest wheat-producing area in the world. We are talking of what is commonly known as the 'Dalton Table.' Forty years ago it grazed two or three steers to the quarter section. Now it is producing more wheat to the acre than any equal area in the world. But wheat is not the only thing produced. It is producing cream, eggs and poultry; beef cattle and hogs. We venture the section that Cheyenne county is shipping more of all things per capita than any county in Nebraska. Let's hear from the other counties.

"In every town; where the Good Will special stops, we meet men eligible to our 'We-Knew Him When' club. We knew them when we traveled through this section in the fall and winter of 1880, when starvation threatened them; when the future looked dismal. But they stuck it out. Now the famous Dalton Table is the bread-basket of the world.

"Dalton, by the way, is a live and up-to-date little city. When the Good Will tourists arrived they were met by charming girls who distributed miniature loaves of bread made from Cheyenne county wheat, done up in a wrapper labeled: 'Loaf a While in Dalton. We shipped 558 carloads of wheat and 91 cars of hogs in 1926.' A good town is Dalton and its stories are spread to the world by a live little newspaper, The Dalton Delegate, edited by a protege of ours, Don Dey Eremond."

Some Questions Answered

The questions have been asked: "What is the reason the Dalton country always gets a better crop than is produced in other dry land sections of the West? Does Dalton get more rainfall?"

The answer is simple: The soil around Dalton is better. It is considered the best that can be found in any dry land section of the West. During the period of high land prices a few years ago, an authority on land values of the West stated that the Dalton



FARMERS' STATE BANK, DALTON

land was the only land that was worth the price paid.

It is not claimed that Dalton gets any more rain than does any other section of the West in what is known as the dry land belt. The soil is the answer—and year after year the fertile acres surrounding Dalton continue to produce big crops.

Wheat has been the main crop in this territory for a number of years. During the past few years more corn has been planted and more hogs are being raised. It is an ideal country for hogs. Cholera is almost unknown. **High Spots in the Progress of the Dalton Country**

The climate is not surpassed.

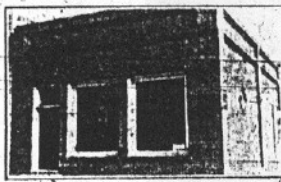
Our big problem? We need more farmers. The Dalton country can support three times as many farmers as it now has, and more prosperity will accrue to the people of our community.

Cheyenne county has the best roads in the West—and more miles of them than any other county boasts.

There are more tractors in Cheyenne county than in any other county in Nebraska. And Dalton has its full share.

Dalton has four elevators, the capacity of one of them being 85,000 bushels, and the total capacity of the four being 356,000 bushels.

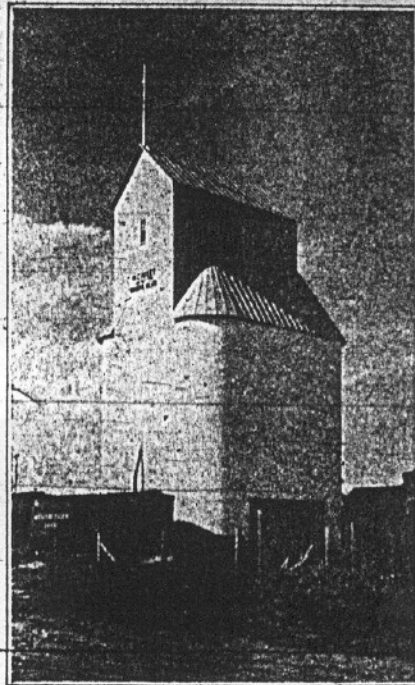
Cheyenne was the banner wheat county of the United States for the year 1926.



DALTON STATE BANK

John Treinen, Cheyenne county farmer, is lighting his fields with electricity, turning the night into day, for the purpose of speedily harvesting his crops. He has grown rich at the business of farming in Cheyenne county. Mr. Treinen's address is Sidney, Nebraska.

One Cheyenne county farmer received \$28,000 spot cash for the 22,000 bushels of wheat from 616 acres. Any intelligent wheat grower can do as well with the same efforts.



DALTON ELEVATOR, CAPACITY 85,000 BUSHELS

Cheyenne County Farmer Gets \$28,000 Spot Cash; 22,000 Bushels Wheat From 616 Acres

J. M. Kreader Has Harvested a Mine of Gold From the Fertile Lands of Cheyenne County. Came Without Money and Made Himself Rich in a Few Years of Intelligent Farming in the World's Greatest Wheat Country

Twenty-eight thousand dollars, good, United States money, was handed to J. M. Kreader for 22,000 bushels of wheat grown on 616 acres of his Cheyenne county farm, in one season. This is no dream. The money, in one payment, came to him through the American Bank of Sidney.

J. M. Kreader and his son, J. C. Kreader, are located on one of the finest farms in the world, 13 miles west of Dalton, in the great Cheyenne county wheat belt. They have half a section, farm with the latest improved machinery and on a large scale.

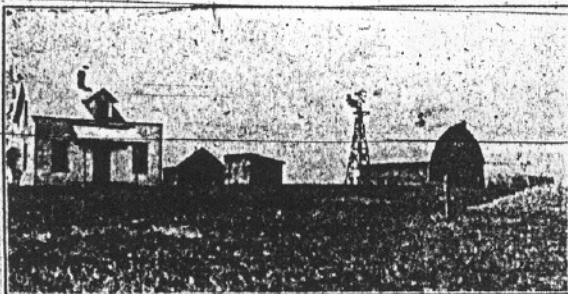
In addition to wheat, the Kreaders raise corn, rye, oats and barley. This year they have one field of 230 acres, summer (fall) wheat. It will bring in as much money as the capital stock of the usual small town bank. Another field of 670 acres is ready.

The Kreader home is a model one, as shown by the photo. Electric lights, telephone, radio. More comforts and conveniences than the average town home.

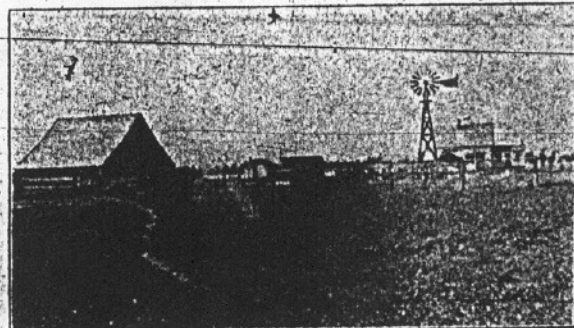
J. M. Kreader came to Cheyenne county in 1909 and commenced the farming business in 1912. He is one of the many wealthy and successful business men and he dug his wealth from the fertile soil of Cheyenne county.

Use of improved machinery enables the Cheyenne county farmer to market his crops from the field, if he wishes to do so. This gives him immediate cash for other operations.

Crops in Cheyenne county farms are like money in United States bonds—always something to fall back on.



One of the improved farms of W. LeRoy Larson, Real Estate Dealer of Sidney, Nebraska.



THE KREADER FARM, 13 MILES WEST OF DALTON