

View of the elevators of the Nebraska-Colorado Grain Company and Farmers' Co-Operative Association at Gurley, showing a busy scene during the Golden Harvest Time.

### The Walker Farm— One of Cheyenne's Finest

The B. L. Walker farm, located three miles south and one mile east of Gurley, is one of the finest farm homes in this greatest grain growing country in the world. The accompanying photo of the farm home gives only an idea of the wonderful results that have been accomplished on this place.

There are 320 acres of improved land in the Walker farm and it is tightly wire fenced. The crops are divided into corn, barley, oats and wheat, which are rotated annually.

One of the finest orchards in western Nebraska grows on this farm. There are 750 trees of apples, plums and cherries. The entire farm is under cultivation. Combine, tractor and improved machinery are used in the big fields.

The home is a modern one. There is furnace heat, hot and cold pure water; a DeLoe light and power plant, furnishing electric lights and power for operating washing machine, churning, fanning mill, etc. There is every home convenience to be found in improved town properties.

In addition to profitable shipments of eggs grown, Mr. Walker makes annual shipments of from one to three carloads of hogs.

Mr. Walker is retiring from the farm because of advancing years and other interests, and is offering it for sale. His address is B. L. Walker, Gurley, Nebraska, and he will be pleased to furnish information to those interested in western farming.



M. E. CHURCH OF GURLEY

### The Huntsman Elevator

About ten years ago the Farmers' Union Co-Operative Association established an elevator at Huntsman, a point on the Burlington Railroad in Cheyenne County a few miles north of Sidney. At the time of its organization the Farmers' Union Co-Operative Association came in as an important need for the grain growers of that part of the county.

The Huntsman elevator was erected and is now operated for the benefit of the farmers in that part of the county. Some of the largest grain producing farms in the county are to be found in the vicinity of Huntsman and this elevator furnished a good, dependable market for their grain. It has served them faithfully for ten years. A district of about four miles by nine miles is served by the Huntsman elevator.

W. M. Taylor has been manager of the elevator during the past year and has made a pronounced success of it. He has become popular with his customers. While the institution was established more for the purpose of sup-

plying a dependable market for the farmers, Mr. Taylor has been able to show a substantial balance during his term as manager, and has made the institution one of the popular elevators of the county.

The Huntsman elevator has a capacity of 15,000 bushels.

### Taylor Grocery

The Taylor Grocery and Market is one of the leading business places in the enterprising town of Gurley. The business was established in 1924 by its present proprietor, L. B. Taylor, and has grown in volume until it is now one of the important business places in the community. The Taylor Grocery and Market handles a general line of groceries and meats and has become a popular place because of the freshness of the stocks and courtesy of the proprietor.

L. B. Taylor takes an active part in the development and upbuilding of the community, and is one of its leading citizens. He is always willing to give of his time and means to the welfare of the community in which he lives.

### Huntsman Store

About a year ago Fred Slemers established a general merchandise business at Huntsman, which is in the heart of one of the greatest grain growing districts in the county. The beginning was made in a small way, but the business has grown by leaps and bounds and has become an important factor in the affairs of that community.

In addition to a complete line of general merchandise, Mr. Slemers, whose store is located on the north and south highway, operates a filling station and sells automobile accessories and tires.

Mr. Slemers is a prominent business man and takes an active part in the development of the community in which he lives. He is postmaster at Huntsman and manager of the Nebraska-Colorado Grain Company's elevator there. He is also interested in and an authority on farming.

### Gabriel Billiard Parlor

Charles Gabriel established his billiard hall in Gurley in 1921 and during the years it has grown to be one of the important businesses in the community. In addition to billiards, the Gabriel place has a stock of cigars, tobacco and candy and soft drinks of all kinds. It is a club for working men during their idle hours and a gathering place where the affairs of the community are discussed, conducted in a clean, wholesome manner.

Mr. Gabriel is prominent in the affairs of the community and gives much of his time and means in the best interests of Gurley and the country surrounding. He is a member of the village board and occupies a prominent place in the civic and social life of Gurley.

### Bussie's General Store

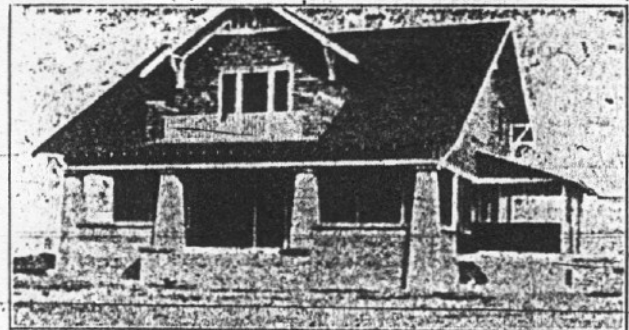
The Bussie General Merchandise store is one of the oldest business institutions in Gurley. It was established in 1914 when F. W. Bussie, its progressive proprietor, came into the community, saw the opportunities of the future and pinned his affections to the town. It is the largest mercantile business in the general line in the community and is deservedly popular with the trade of Gurley and surrounding.

The Bussie store handles a general line of merchandise, buys and sells farm produce, poultry, etc. The store carries a line of goods for men, women and children, and has a stock that can be depended upon to serve the

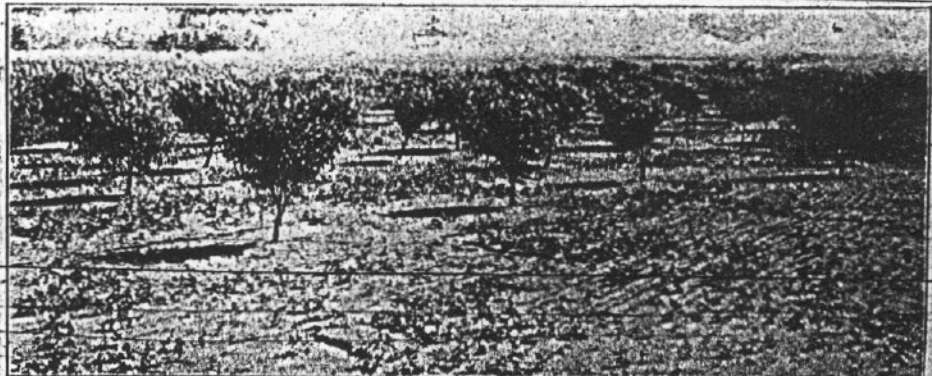
community. Good serviceable lines and courteous service are features in this store.

Mr. Bussie has always been an active, moving spirit in the community and given liberally of his time and means for the advancement of everything intended for the best interests of Gurley and surrounding country.

Cheyenne is the one agricultural county of the nation that has bobbed up into first place without much fuss being made about it. The same results in Florida or California would have been proclaimed with the beating of drums and sounding of horns that would make a boiler factory sound like the hospital zone.



B. L. WALKER FARM HOME



ORCHARD ON THE FARM OF B. L. WALKER, GURLEY.