

# Home Dairy Cafeteria

Two Good Places to Eat—Here and at Home

66 Main Street

A simple example in Thrift,  
plus Quality, plus Economy  
equals

## The Economy Cash Market

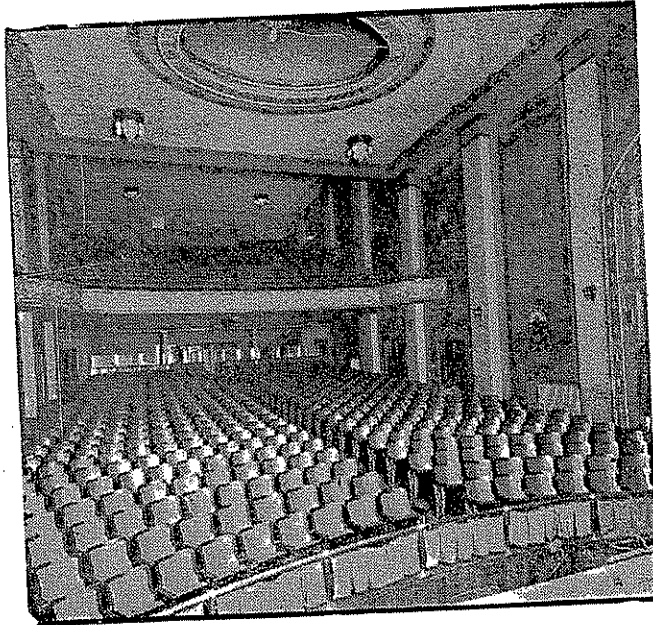
10 State Street      Phone 615-W  
*Where Better Meats Cost Less*

## Casey Bros.

118 Main Street

*The Home of*

“Batavia Club”  
Coffee



New Family Theatre  
*The House Beautiful*

## Autographs

Mary G. Buge \_\_\_\_\_ '32

Minnie Pralle

Gouverna Thomas \_\_\_\_\_ '32

Robert Davis \_\_\_\_\_ '32

Earl M. Garrough June 1, '27

Willard Wells June 1, '32

Robert S. Harvey June 1, '32

Eleanor Louise Burt '31

Lucile Bailey '31

Ruth E. Wilder \_\_\_\_\_ '32

Ruth S. Furlley

Jane Stelman '32

Gertrude A. Myers J. T. S. '27

M. Lloyd Darnsworth '32

Norman Krieger '32

Eleanor M. Carlo

Harold Smith

John H. Davis 32

Harry Taylor ("Bus") 31+

Charles J. Lehman (31 ?)

Millard Noonan 31 (maybe)

Valera Goodridge 1932

Carlton Butler 1932?

Ward Morley - 1932

Regina E. Jollett

Robert A. Kote

LaBene Doctor '32'

Lena Rosca 32'

Mary Zerby - 32

Betty Dibble - '32

Elaine Hudson - '32