

# DCGS NEWS

D E N T O N C O U N T Y G E N E A L O G I C A L S O C I E T Y

## OCTOBER MEETING THURSDAY, OCTOBER 9, 2008



1896- Denton County Courthouse-

The Denton County Genealogical Society meets on the second Thursday during the months on September-November and January-May.  
6:30 P.M.

Denton Public Library, Emily Fowler Central Library, 502 Oakland St., Denton, TX 76201  
www.rootsweb.com/~txdcgs

**Program:**  
“Courthouse Records”  
**Speaker: Tresa Tatyrek**

Tresa is Past President of the Dallas Genealogical Society. She is the list mother for several surname mail lists on rootsweb. Tresa teaches a Special Interest Group on Family Tree Maker twice a month, one at the Grapevine Library and the other for the Dallas Genealogical Society at the J. Erik Jonsson Library

in Dallas. Tresa was named 2005 Volunteer of the Year for the Dallas Genealogical Society, the 2004 Volunteer of the Year for the Grapevine Library, and holds a Certificate of Outstanding Service from the DAR for her work on the Information Specialists Committee for Website Construction.

Tresa works on the Shows, Touchstone, and Taunton surnames

everywhere and anywhere, not just the directly related lines to her or her husband.



### INSIDE THIS ISSUE:

Program: “Courthouse Records” Speaker: Tresa Tatyrek	1
October is Family History Month	
Connecting With Cousins By Kathy Strauss Treasurer’s Report	2
Minutes	3
News from the Library Emily Fowler Central Library Receives Conservation Bookshelf	4
Ancestry Quick Tips	5

## OCTOBER IS FAMILY HISTORY MONTH

Family History Month takes place every October and is a time to bring your family together to remember and honor your ancestors.

Making Family History Month nationally recognized has been a project many have worked hard on for years. Senator Orrin Hatch helped pass legislation that designated October as Family History Month in 2001, 2002, and 2003. He has said, “ Researching ancestry is a

very important component of identity. It can lead to long-sought-after family reunions or allow for life saving medical treatments that only genetic links will allow.”

Celebrate your roots with your family this month.



## Connecting With Cousins and Discovering Our Mutual Origins

By Kathy Strauss

In mid-September, Chris and I took our first trip together to New England. We attended the Soule Kindred in America annual reunion in Plymouth, Massachusetts.

Soule Kindred in America, Inc. was formed in 1967 by a group of dedicated people who were interested in preserving and passing information on to future generations. It is a non-profit organization incorporated in Massachusetts in 1972. Through the diligence of the first president George Soule and Colonel John Soule, direct descendants of George Soule, a Mayflower passenger, a great heritage was found to have been left by our founding fathers.

We flew into Boston a day before the

reunion in order to spend some quality research time at the New England Historic Genealogical Society Library.

Once we arrived in Plymouth, we enjoyed several planned outings, including a trip to Duxbury, a tour of the Mayflower II, a day at Plimouth Plantation, complete with a luncheon of historic foods.

Over 50 people from all over the county attended this reunion. I was able to meet with cousins who are descended from as far down as the 5th generation from the Pilgrim, George Soule.

Following the reunion, Chris and I travelled to Dartmouth and Norton, Massachusetts to do more research

into our roots. Chris was able to look at Norton records from the 1700's which answered some questions he had on one of his lines.

We both enjoyed the trip tremendously and we met some fantastic people who we will keep in touch with for a long time to come. We are looking forward to next year's reunion in Los Angeles.

Surname organizations often have reunions, and it is a good way to meet people and get help with mutual research questions. Check on these organizations on Cyndislist, Genforum, or Rootsweb.

## TREASURER'S REPORT

September 30, 2008

**Balance July 31, 2008**

**\$1,822.06**

### Funds Deposited

Dues	\$ 200.00
Lock-in	20.00
Birth Book	35.00
Death Book	25.00
Interest	.69
<b>Total Deposits</b>	<b>\$ 280.69</b>

### Funds Disbursed

Speaker Fee	\$ 50.00
<b>Total Disbursed</b>	<b>\$ 50.00</b>

**Balance Sept. 30, 2008**

**\$2,052.75**

**2008-2009 Paid Members—39**

### Library Donations

April 1995 - May 06	\$2,876.52
June 2006 – June 08	500.00

Birth Books Sold (59)	\$1,915.00
Printing Cost (200)	-2,049.13
Postage	-118.69
Sales Tax Paid	-104.78
Advertising (1)	-30.00
<b>Profit</b>	<b>\$ -387.60</b>

Death Books Sold (141)	\$3,254.72
Printing Cost (300)	-1,593.15
Consignment Fees	-400.00
Postage	-156.99
Sales Tax Paid	-77.19
Advertising	-237.45
<b>Profit</b>	<b>\$ 789.94</b>

Respectfully Submitted,  
Holly Hervey, Treasurer

**MINUTES—SEPTEMBER 2008**

The Denton County Genealogical Society met in the meeting room of the Emily Fowler Central Library on September 11, 2008. Refreshments were provided by the officers. President Linda Touraine began the meeting at 7:00 PM and welcomed everyone, including our visitors and new members.

Linda opened our business meeting with the May minutes and the treasurer's report. They were both approved as read. Linda read a list of the new books purchased by the library with the

April donation. The books will be soon available for use.

In new business, Marilyn Simms is requesting reviews on the different genealogy programs used by the membership. This information will be used in planning the January program. Marilyn is also requesting stories from your research, tips and tricks, and any other creative endeavors in regards to genealogy for our May round robin.

If you have any family books or anything of genealogical interest,

please bring them to the table at the back wall of the room so that others might find inspiration, and who knows, maybe find another cousin. Marilyn Simms introduced our speaker for the evening, Dr. Richard McCaslin. He presented an entertaining and informative program entitled "Presidents". Meeting was adjourned at 8:30.

Respectfully submitted,

Shirley Harris, Secretary

**EXECUTIVE BOARD MEETING MINUTES—JUNE 13, 2008**

Officers for the Denton County Genealogical Society met on June 13, 2008 to discuss and finalize plans for programs to be presented during the 2008-2009 year. Marilyn Simms made a motion to raise out-of town speakers fees from

\$50.00 to \$75.00 due to rising gas prices. Motion passed.

Respectfully submitted,

Shirley Harris, Secretary

**Following the Evidence Trail****Texas State Genealogical Society****2008 Conference at Abilene**

*co-hosted by West Texas Genealogical Society*

**MCM Elegante' Suites**

**4250 Ridgemont Drive, Abilene TX 79606**

**October 24-25, 2008**

**Contact Abilene Convention Bureau for more things to do**

**[www.abilenevisitors.com](http://www.abilenevisitors.com) 800-727-7704**



## NEWS FROM THE LIBRARY

### **The Haunting of Emily Fowler**

Is the Emily Fowler Central Library haunted? Rumors have circulated for years that more than just books reside in Denton's original Library. The Denton Area Paranormal Society has conducted a year-long investigation of the building. Join us as they present their findings along with "how to" tips for paranormal research.

**10/25/2008 Emily Fowler Central Library 3:00 pm**

The Denton Public Library Special Collections Department has been a busy place throughout the year. Researchers from all over the country have stopped in to investigate their local Denton roots and to do historical research.

To access our Genealogy Web Page, log-in to [www.dentonlibrary.com](http://www.dentonlibrary.com) and click on the Genealogy button. Our page provides information about our collections, indexes to the Denton Record Chronicle obituaries, marriages, and births, and links to in-house resources and important genealogical websites.

Our in-house resources have grown this fall. We now

have two new electronic resources available for you to peruse when you come in to the library.

Footnote.com

Original documents unite with genealogists and historians.

Newspaper Archives

Provides access to digital images of over 3,000 newspapers, including the Denton Record Chronicle issues from 1909 to 1977. Every newspaper in the archive is fully searchable by keyword and date, making it easy for you to quickly explore historical content.

The Special Collections staff can provide in-depth research assistance. We will help you to make inroads into those "brick-wall" problems. For an appointment, call the Genealogy Desk, 940-349-8752 and set up an appointment.

Volunteer opportunities abound in the Special Collection Department. Learn how to work on archival projects, indexes, or come in regularly to read shelves in the various book collections. Your help will be appreciated.

## **Emily Fowler Central Library Receives Conservation Bookshelf**

Treasured objects and artifacts held by the Emily Fowler Central Library will be preserved for future generations with the help from the *IMLS Connecting to Collections Bookshelf*, a core set of conservation books, DVDs and online resources donated by the Institute of Museum and Library Services (IMLS), the primary source of federal funding of the nation's museums and libraries. IMLS and its cooperator the American Association for State and Local History, will award a total of 3,000 free sets of the IMLS Bookshelf by the end of 2009.

The Denton Public Library is being awarded this essential set of resources based on an application describing the needs and plans for care of its collections. The IMLS Bookshelf focuses on collections typically found in history or art museums and in libraries' special collections, with an added selection of texts for zoos, aquaria, public gardens, and nature centers. It addresses such topics as the philosophy and

ethics of collecting, collections management and planning, emergency preparedness and culturally specific conservation issues.

The IMLS Bookshelf is a crucial component of *Connecting to Collections: A Call to Action*, a conservation initiative that the Institute launched in 2006. IMLS began the initiative in response to a 2005 study by Heritage Preservation documenting the dire state of the nation's collections. The multi-faceted, multi-year initiative shines a nationwide spotlight on the needs of America's collections. For more information on the conservation initiative, please go to [www.imls.gov/collections](http://www.imls.gov/collections).

The materials received in the IMLS *Connecting to Collections* bookshelf can be viewed in the Special Collections department at the Emily Fowler Central Library, 502 Oakland.

## ANCESTRY QUICK TIPS

### Keep the Date on Newspaper Clippings

I have been scanning obituaries from a file that my mother kept of family. I am most disturbed by the lack of the date and sometimes the name of the paper--just an old yellowed announcement and not even the year on most obituaries. When you're clipping newspaper articles to save, be sure to include the name and date of the newspaper.

Nancy Cragun Day

### Label Your Genealogy Binders and Folders

I've created labels to put on all of the genealogy binders and folders I bring with me to libraries or anywhere else I research. They include my name and phone number with the message that if anyone finds them to please call and that I will gladly reimburse the finder for return postage to mail them back to me. Hopefully, should I ever lose one, I'll be able to get it back this way.

Verna, Huntington Beach, California

### Look at Alternate Names

Recently I was searching census records for a relative. I had found him in the 1910 and 1930 census in the same location, but I could not find him in the 1920 census. I tried several different tactics, using common misspellings for his last name, Soundex, searching by birth year, first name, etc, but without luck.

I searched on the last name again. This time, among the results at Ancestry, I noticed another family with the same last name. For that family alternate names were listed, the correct spelling and also an incorrect spelling from either the original census taker or the transcriber. This misspelling was one I had never seen before. I redid my search using that misspelling and bingo, there was the person I was looking for! His last name has never been corrected with an alternate name for this census.

In the future I will pay more attention to the alternate names for other similarly named.

Joan

### Post-ems on RootsWeb

On RootsWeb, many of the databases let you add Post-ems, for instance California Deaths, Texas Deaths, and the Social Security Death Index (SSDI). When I locate family in these indexes, I add the following with the Post-ems:

~ First Middle and Last Name (Maiden if applicable)

~ Husband or Wife of . . .

~ First/Middle/Last Son or Daughter of (Fathers full name & mother's maiden name)

This identifies the person, supplies information the researcher may not have, and gives the researcher my contact information, should they need more information. If all researchers would do that it would grow into a very useful database.

Tom Hoot

### Create Your Genealogy "Business" Card

I have run into people at conferences and local society meetings who share my surname interests. For these occasions, I have created genealogy "business cards" that include my contact information, surname interests, and the geographical areas where my search is focused. I've also added a link to my tree on Ancestry, so that people I meet can check for themselves to see if there is a connection between our families. Office supply stores carry paper that you can use to print the cards.

Natasha Gold

### Save Address Books

I read with interest, the article "[Diary on the Family Calendar](#)" in the 7 Sep 2008 edition of *Ancestry Weekly Journal*. Another important reference source found in the home is the handwritten personal telephone/address book kept near the telephone. While looking for a family member's address in our telephone/address book, I was pleasantly surprised to find in the back of the book, an area for birthdays, anniversaries, births, etc. We had gotten this little book as a gift early in our marriage, and it contained names and dates with 40 years worth of entries. My wife had been keeping this information in order to send cards, etc. and I didn't even know it. So, when a loved one passes away, and it's your responsibility to dispose of their belongings, check for a personal telephone / address book. It could contain priceless information about family and friends.

Bob Allen, Crystal River, FL

### 2008-2009 OFFICERS

President—Linda Touraine

Vice-President—Marilyn Simms

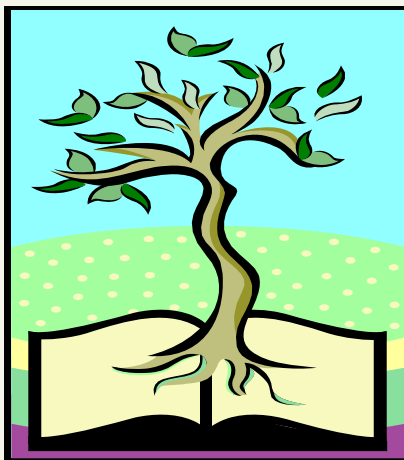
Secretary—Shirley Harris

Treasurer—Holly Hervey

Librarian—Kathy Strauss

Webmaster—Chris Strauss

Parliamentarian—Diane Abner



**NEXT MEETING OF  
THE DENTON  
COUNTY  
GENEALOGICAL  
SOCIETY WILL BE ON  
NOV 13, 2008  
Emily Fowler Central  
Library  
502 Oakland St.  
Denton**

**DENTON COUNTY  
GENEALOGICAL SOCIETY**

PO Box 424707  
Denton, TX 76204