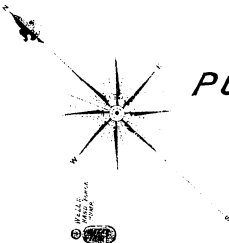
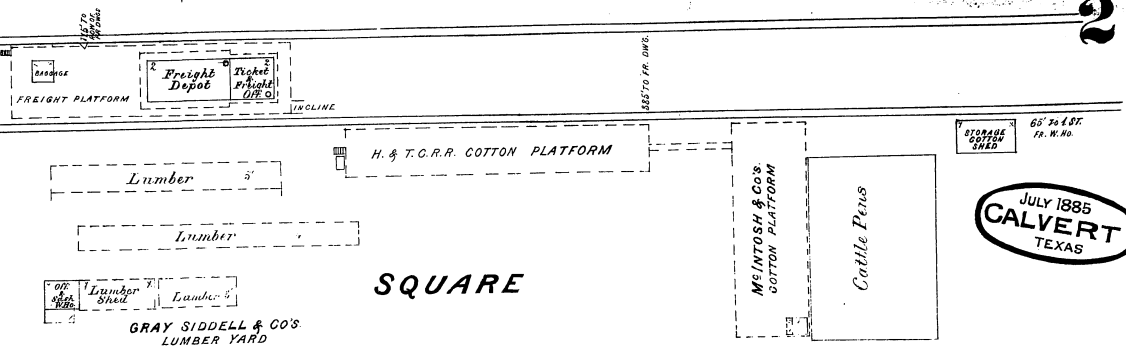


JULY 1885  
**CALVERT**  
 TEXAS



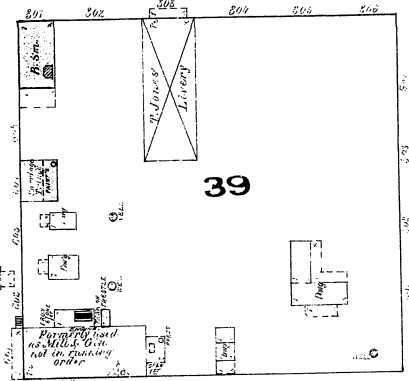
**PUBLIC SQUARE**



GRAY SIDDELL & CO'S  
 LUMBER YARD

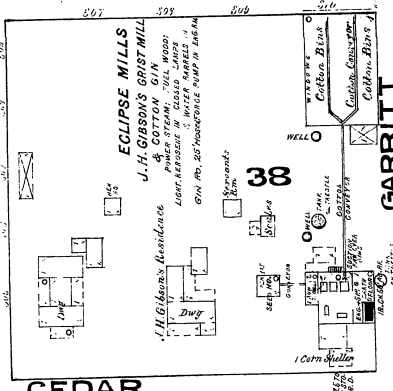
SEE SHEET No. 1.

**GREGG**



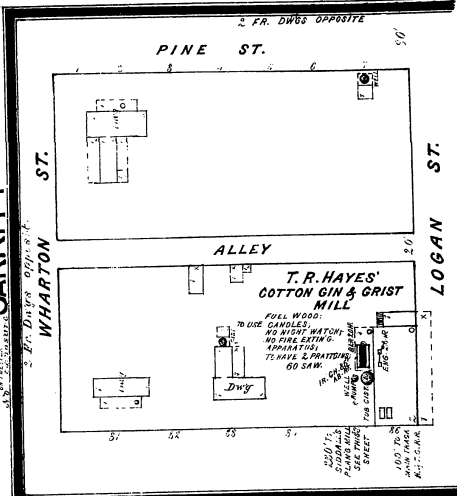
39

**MAIN**



38

**GARRITT**

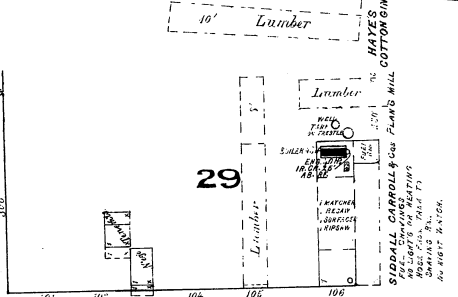


T.R. HAYES'  
 COTTON GIN & GRIST  
 MILL

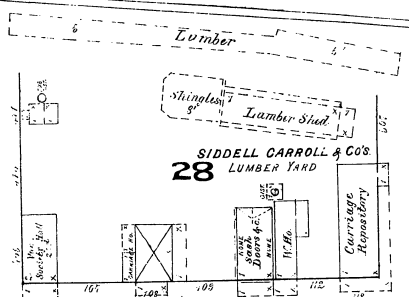
**CEDAR**

HOUSTON & TEXAS CENTRAL R.R.  
 100' FROM MAIN TRACK TO EAST SIDE OF RIGHT OF WAY FR. DWGS BEYOND

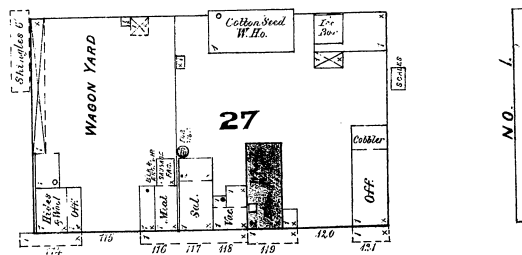
50 TO 127 1/2  
 FR. 2400'



29

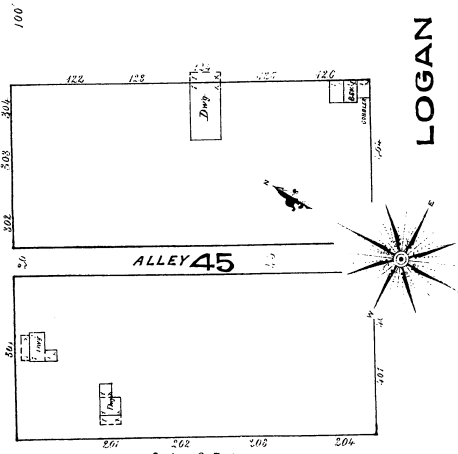


28



27

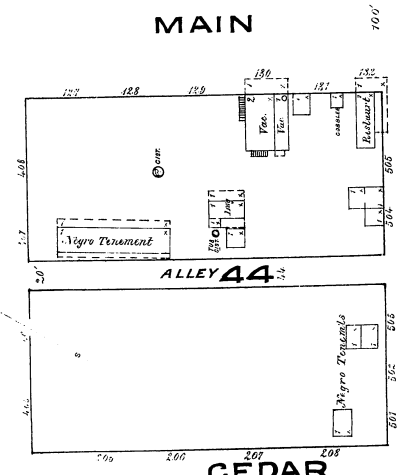
**WHARTON**



ALLEY 45

Scale of Feet.

**LOGAN**

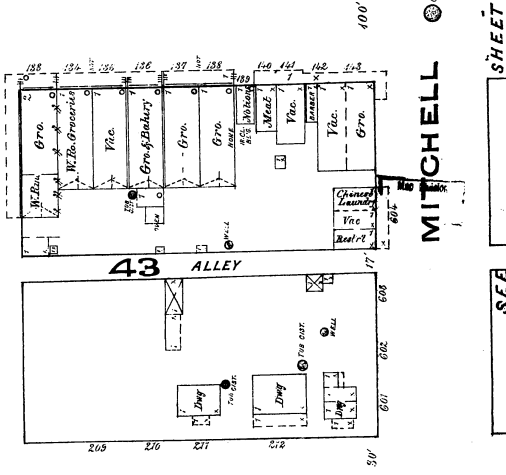


ALLEY 44

**CEDAR**

3 Fr. Dwgs. on opposite side

**BARTON**



ALLEY 43

3 Fr. Dwgs. on opposite side

**MITCHELL**

SEE SHEET

SEE