

INDEX

STREETS	SHEET	INDEX	SHEET
Anderson, E. A.	100-001	1	100-001
Barren, N.	100-002	2	100-002
Beech, E.	100-003	3	100-003
Birmingham, N.	100-004	4	100-004
Burgess, N.	100-005	5	100-005
Cedar, E.	100-006	6	100-006
China, E.	100-007	7	100-007
Colonywood, W.	100-008	8	100-008
Edin, E.	100-009	9	100-009
Gage, N.	100-010	10	100-010
Hanna, N.	100-011	11	100-011
Hesper, N.	100-012	12	100-012
Kiper, N.	100-013	13	100-013
Lagan, N.	100-014	14	100-014
Magnolia, E.	100-015	15	100-015
Main, E.	100-016	16	100-016
Mitchell, N.	100-017	17	100-017
Perin, E.	100-018	18	100-018
Parkway, N.	100-019	19	100-019
Ray, E.	100-020	20	100-020
St. James, N.	100-021	21	100-021
St. Joseph, N.	100-022	22	100-022
St. Luke, N.	100-023	23	100-023
St. Mark, N.	100-024	24	100-024
St. Paul, N.	100-025	25	100-025
St. Peter, N.	100-026	26	100-026
St. Vincent, N.	100-027	27	100-027
St. Yves, N.	100-028	28	100-028
Union, N.	100-029	29	100-029
Washington, N.	100-030	30	100-030
White, N.	100-031	31	100-031
White, N.	100-032	32	100-032
White, N.	100-033	33	100-033
White, N.	100-034	34	100-034
White, N.	100-035	35	100-035
White, N.	100-036	36	100-036
White, N.	100-037	37	100-037
White, N.	100-038	38	100-038
White, N.	100-039	39	100-039
White, N.	100-040	40	100-040

of san. 696 JUL 17 1931

WATER FACILITIES:
Privately owned. Source: One deep well system gravity No reservoirs.
One Layne electric driven pump, size 6 cpsi, 3500 GPM
One Worthington duplex steam driven pumps, size 35-3/4" cpsi, 250 GPM each.
80000 gal stand pipe, 100 ft high, base level with business section.
Auxiliary System: Both Worthington pumps can be used direct for high pressure.
5/8 Miles of 4" 5' 8" water mains, 25 Double hydrants
Average daily consumption 75,000 gallons
Domestic pressure at Pumping Station 40 lbs

FIRE DEPT
Volunteer system, 24 Members including one Chief (Volunteer) and 2 Act. Chiefs (Volunteer) One Fire Station, fully motorized.
One Red Speed Motor triple combination pump, motor & hose
Truck, pump, hoses, 400 GPM, 60 Gal. booster tank, 200 ft. hose
1000 ft. 2" hose & minor equipment
One Wichita cabin ladder & chem truck one 50 gal chem tank, 250 ft. hose, 300 ft. 2" hose & minor equipment
500 ft. of 2" hose in reserve.
Fire Alarm given by telephone, bell & steam whistle
500 ft. of 2" hose in reserve.
Public lighting - elec

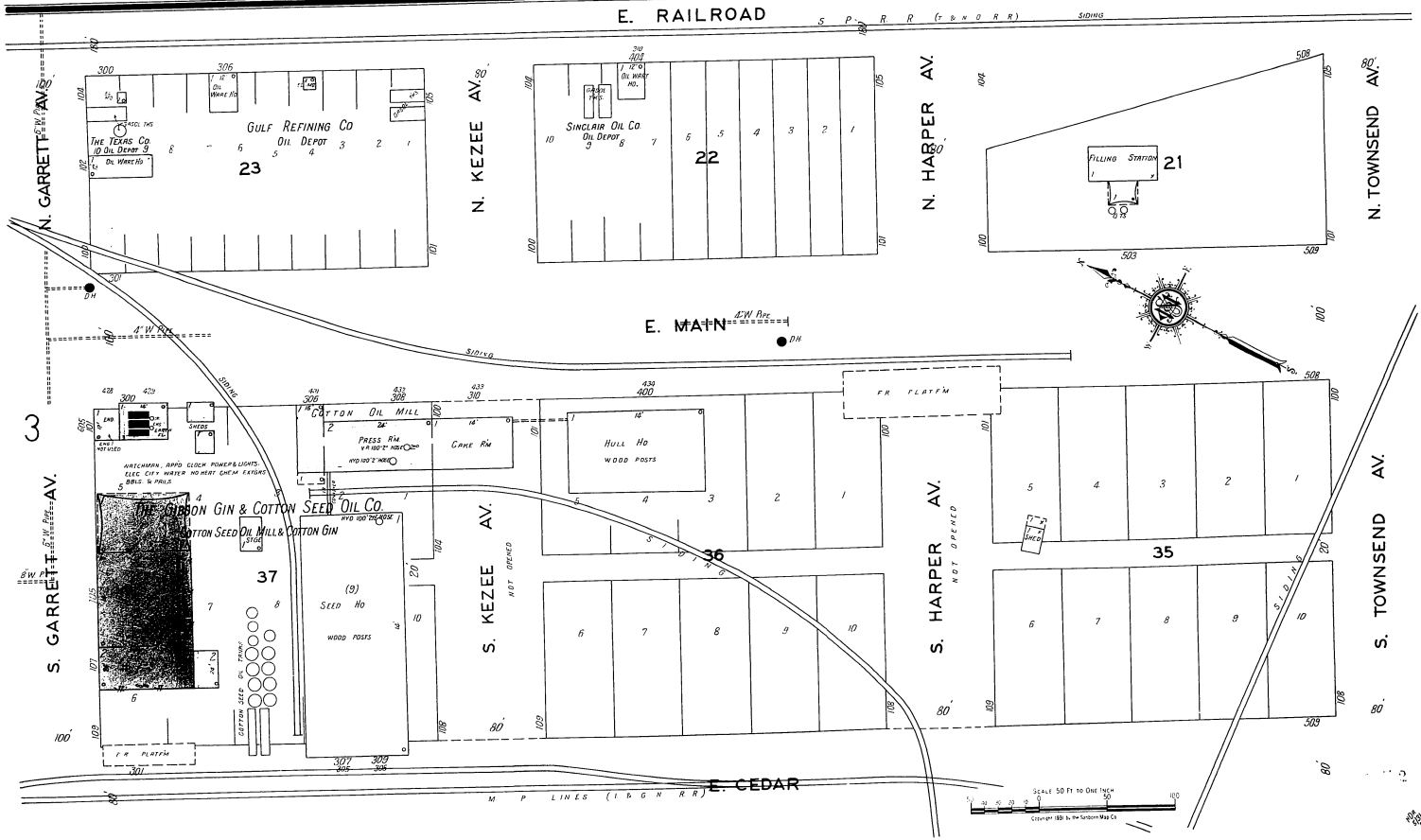
FIRE RESISTIVE ROOFING ORDINANCE.
Ordinance Prohibits Wooden Shingle Roofs in Fire Limits only.

KEY

- 1. FIRE HALL AND ROOF
- 2. FIRE ENGINE AND PUMP
- 3. WATER CONDUIT
- 4. FIRE HALL WITH ALAPPOOR
- 5. FRAME PARTITION
- 6. OPENING WITH NON-FIRE
- 7. HULL HO
- 8. HULL HO
- 9. WINDOW 1" STORY
- 10. WINDOW 2" STORY
- 11. WINDOW 3" STORY
- 12. WINDOW 4" STORY
- 13. WINDOW 5" STORY
- 14. WINDOW 6" STORY
- 15. WINDOW 7" STORY
- 16. WINDOW 8" STORY
- 17. WINDOW 9" STORY
- 18. WINDOW 10" STORY
- 19. WINDOW 11" STORY
- 20. WINDOW 12" STORY
- 21. WINDOW 13" STORY
- 22. WINDOW 14" STORY
- 23. WINDOW 15" STORY
- 24. WINDOW 16" STORY
- 25. WINDOW 17" STORY
- 26. WINDOW 18" STORY
- 27. WINDOW 19" STORY
- 28. WINDOW 20" STORY
- 29. WINDOW 21" STORY
- 30. WINDOW 22" STORY
- 31. WINDOW 23" STORY
- 32. WINDOW 24" STORY
- 33. WINDOW 25" STORY
- 34. WINDOW 26" STORY
- 35. WINDOW 27" STORY
- 36. WINDOW 28" STORY
- 37. WINDOW 29" STORY
- 38. WINDOW 30" STORY
- 39. WINDOW 31" STORY
- 40. WINDOW 32" STORY
- 41. WINDOW 33" STORY
- 42. WINDOW 34" STORY
- 43. WINDOW 35" STORY
- 44. WINDOW 36" STORY
- 45. WINDOW 37" STORY
- 46. WINDOW 38" STORY
- 47. WINDOW 39" STORY
- 48. WINDOW 40" STORY
- 49. WINDOW 41" STORY
- 50. WINDOW 42" STORY
- 51. WINDOW 43" STORY
- 52. WINDOW 44" STORY
- 53. WINDOW 45" STORY
- 54. WINDOW 46" STORY
- 55. WINDOW 47" STORY
- 56. WINDOW 48" STORY
- 57. WINDOW 49" STORY
- 58. WINDOW 50" STORY
- 59. WINDOW 51" STORY
- 60. WINDOW 52" STORY
- 61. WINDOW 53" STORY
- 62. WINDOW 54" STORY
- 63. WINDOW 55" STORY
- 64. WINDOW 56" STORY
- 65. WINDOW 57" STORY
- 66. WINDOW 58" STORY
- 67. WINDOW 59" STORY
- 68. WINDOW 60" STORY
- 69. WINDOW 61" STORY
- 70. WINDOW 62" STORY
- 71. WINDOW 63" STORY
- 72. WINDOW 64" STORY
- 73. WINDOW 65" STORY
- 74. WINDOW 66" STORY
- 75. WINDOW 67" STORY
- 76. WINDOW 68" STORY
- 77. WINDOW 69" STORY
- 78. WINDOW 70" STORY
- 79. WINDOW 71" STORY
- 80. WINDOW 72" STORY
- 81. WINDOW 73" STORY
- 82. WINDOW 74" STORY
- 83. WINDOW 75" STORY
- 84. WINDOW 76" STORY
- 85. WINDOW 77" STORY
- 86. WINDOW 78" STORY
- 87. WINDOW 79" STORY
- 88. WINDOW 80" STORY
- 89. WINDOW 81" STORY
- 90. WINDOW 82" STORY
- 91. WINDOW 83" STORY
- 92. WINDOW 84" STORY
- 93. WINDOW 85" STORY
- 94. WINDOW 86" STORY
- 95. WINDOW 87" STORY
- 96. WINDOW 88" STORY
- 97. WINDOW 89" STORY
- 98. WINDOW 90" STORY
- 99. WINDOW 91" STORY
- 100. WINDOW 92" STORY
- 101. WINDOW 93" STORY
- 102. WINDOW 94" STORY
- 103. WINDOW 95" STORY
- 104. WINDOW 96" STORY
- 105. WINDOW 97" STORY
- 106. WINDOW 98" STORY
- 107. WINDOW 99" STORY
- 108. WINDOW 100" STORY



Scale 1000 feet to one inch (Approx)



SCALE 50 FT TO ONE INCH
Copyright 1931 by Standard Map Co.