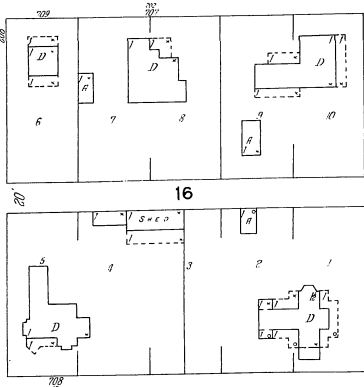


4

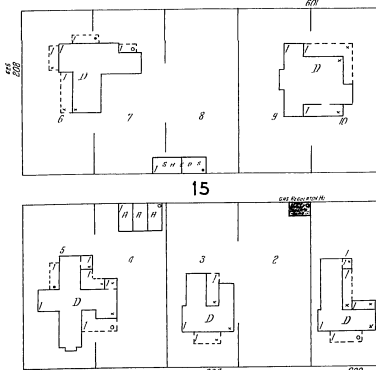
AV. (PERKINS AV.)



16

W. PINE

AV.

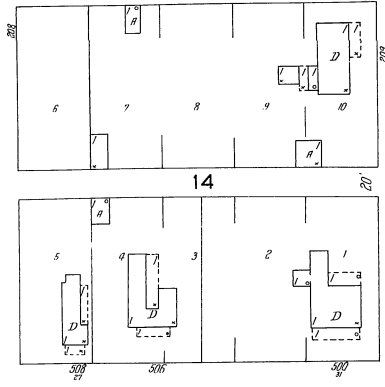


15

W. RAILROAD

S. P. R. R. (T. & N. O. R. R.)

AV.



14

MAR. 1931
CALVERT
TEX.

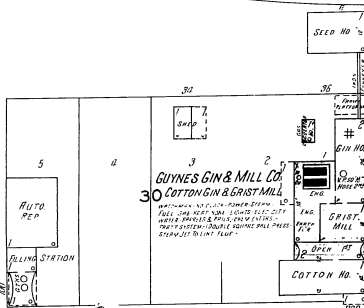
4

AV.

N. BROWNING

AV.

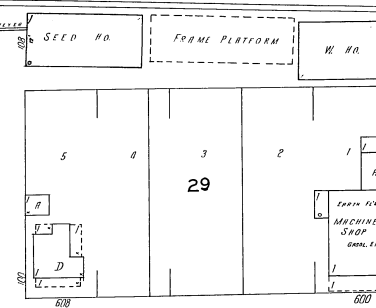
S. BROWNING



30

N. WHARTON

AV.

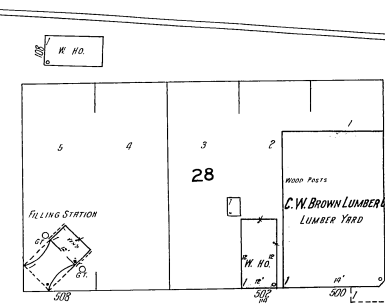


29

W. MAIN

N. LOGAN

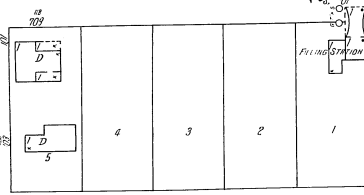
S. LOGAN



28

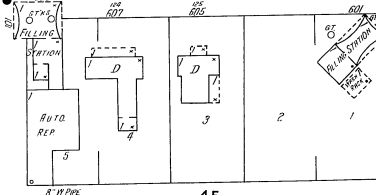
N. BARTON

S. BARTON

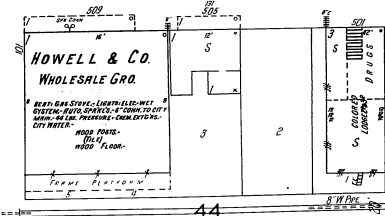


46

S. WHARTON

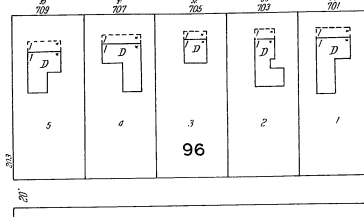


45



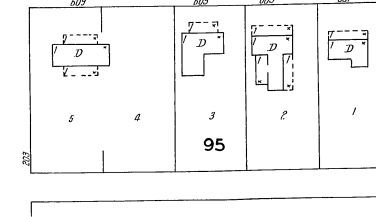
44

SCALE 50 FT TO ONE INCH
Copyright 1931 by the Station Map Co.



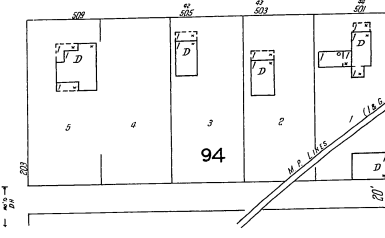
96

S. WHARTON



95

W. CEDAR



94

S. BARTON

AV.