

WATER FACILITIES:
 Private ownership. Gravity pressure about 35 lbs. Joint pipe capacity 46,000 gals. 75 high a elevated 12' above town. No pump. 3" stand pipe elevated on tower 100'. Water supplied by well at Ice Plant. 1 American deep well pump size 6" x 36" capacity 100 gals per minute. 3 single hydrants in station. 4" x 2" x 6" mains, cast in 1881. Slightly out of square.
Note: New Pumping Station to be built in near future. New well to be made near new Pumping Station to be located on Block 1335 of original town.

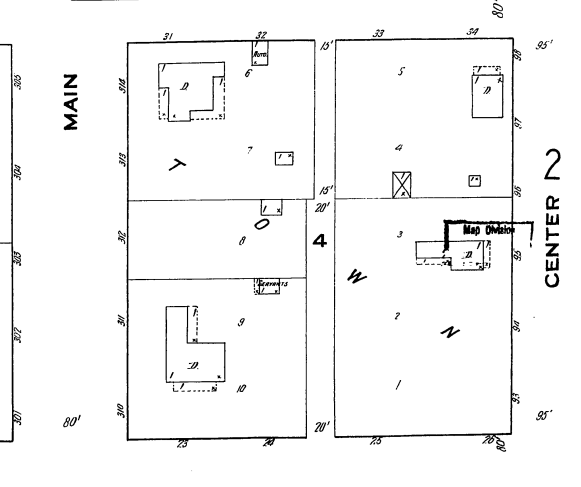
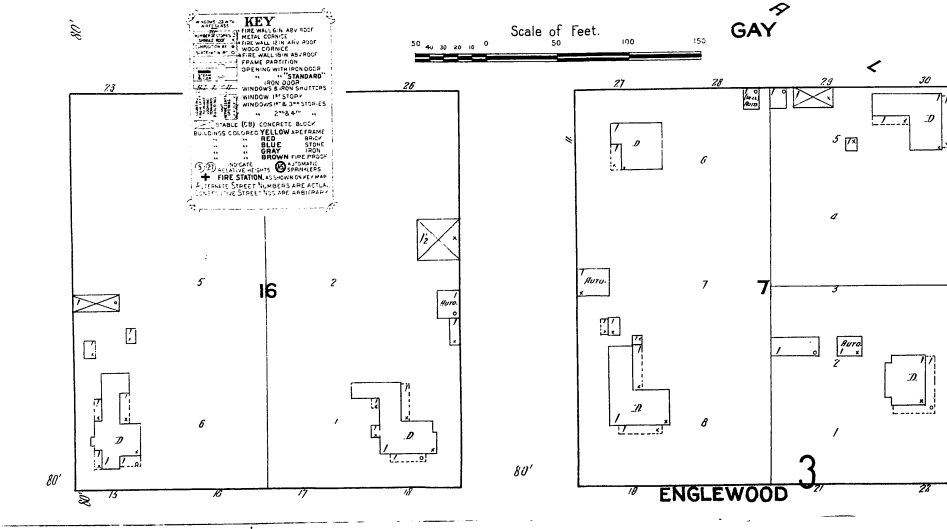
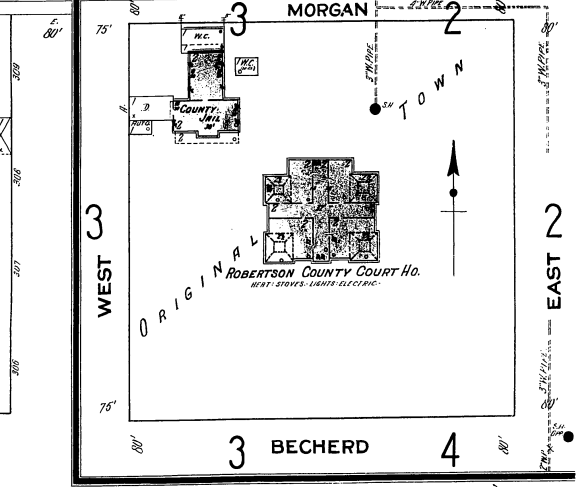
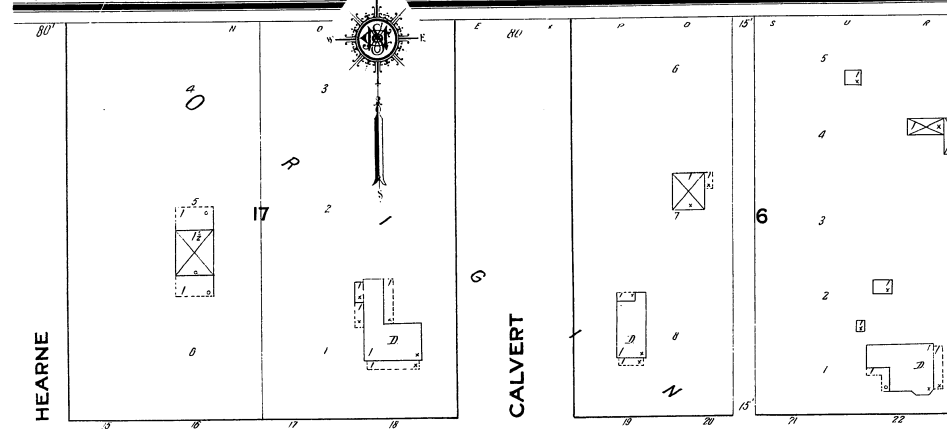
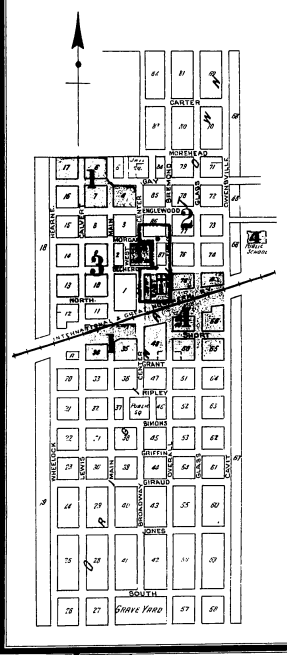
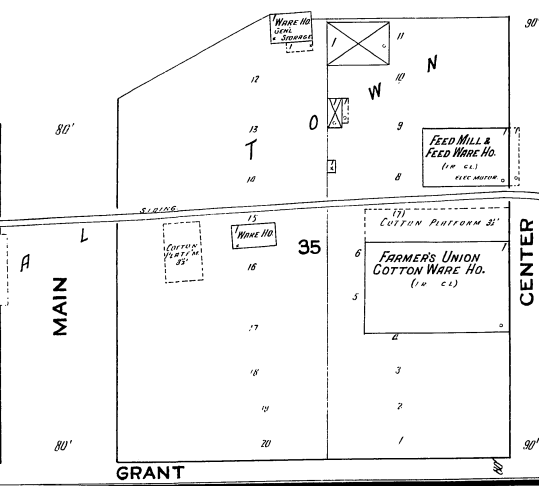
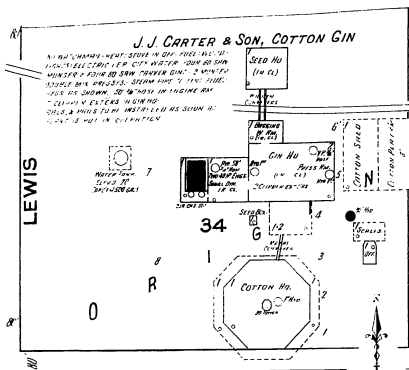
FIRE DEPT:
 Not organized. One 30 gal chemical cart, not in good repair.
 Grade's level except slightly falling near stand pipe. Streets not paved. Public lights electric.



Map Division
 APR 14 1916
 Library of Congress

INDEX

SPECIALS	BLK	NO
Baptist Church	B	3
Carnegie Library	C	4
Carter, J. J., & Son, Cotton Gin	1	1
Central Texas Lumber Co.	4	4
County Court House and Jail	1	1
Cox, J. A., Bottling Works	4	4
Farmers' Hotel	F	3
Mill and Feed Co.	2	2
Union Cotton Warehouse	4	4
Fire Department	4	4
Franklin Public School	4	4
Garter & Maris, Lumber Shed	G	4
Gilland, C. H., Feed Mill	3	3
Guyner's Gin and Ice Plant	4	4
I. & G. N. Railway Depot	I	4
Methodist Episcopal Church (South)	M	3
National Hotel	N	4
Non-Progressive Christian Church	2	2
Post Office	P	4



KEY

- WINDMILL
- WINDMILL FOUNDATION
- WINDMILL SHAFT
- WINDMILL GEAR
- WINDMILL BLADE
- WINDMILL CAP
- WINDMILL HOUSING
- WINDMILL FOUNDATION
- WINDMILL SHAFT
- WINDMILL GEAR
- WINDMILL BLADE
- WINDMILL CAP
- WINDMILL HOUSING
- WINDMILL FOUNDATION
- WINDMILL SHAFT
- WINDMILL GEAR
- WINDMILL BLADE
- WINDMILL CAP
- WINDMILL HOUSING

Scale of Feet. 0 50 100 150