

Visit Texas Tech Law Library

January 12, 2008

10:30 a.m. to 12:00 p.m.



S O U T H P L A I N S G E N E A L O G I C A L S O C I E T Y N E W S L E T T E R

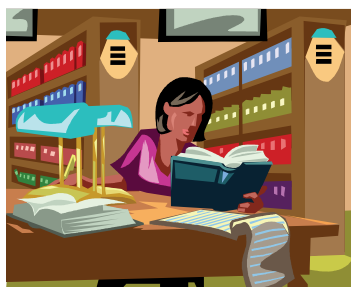
Volume 36, No. 1

January 2008

HAPPY NEW YEAR!

Wishing you a very good year in 2008 and may you find that "lost" ancestor you have been looking for.

For your resolution in 2008, we want you to volunteer in the Genealogy Section at the Mahon Library. You will learn much by looking through the shelves AND helping others in their research. I can guarantee that you will find books which you did not know were on the shelves. You will also meet new friends and they may give you an idea on research which may help you. Sharing ideas is how we learn and that is why our meetings are so important. Be sure to attend all of them and present your ideas.



VISIT TO THE TEXAS TECH LAW LIBRARY

January 12, 2008

10:30 AM to 12 Noon

The Law Library is located at 18th Street & Indiana Avenue. Go in the north entrance [faces the United Spirit Arena] and you may park anywhere on Saturday. There will be someone in the entrance to tell you where to go.

Two law professors and the librarian will give us a tour of the library and how to locate information to help genealogy researchers find data to help in our family research. Should be very interesting.

BRING A FRIEND OR NEW RESEARCHER!

PROGRAMS FOR FEBRUARY THROUGH MAY

These meetings will be in the Community Room, Mahon Library. These programs will be a series of "Beginning Classes" on RESEARCHING YOUR FAMILY TREE.

Even if you have researched for several years, it never hurts to start at the beginning to see if you have missed something in your research. Also, it might "JOG" your memory and teach you a new way to do things.

If you have a friend who wishes to start their genealogy research, be sure and invite them to attend each class. **ALL CLASSES ARE FREE & WE INVITE ALL TO COME.**

HAVE YOU HEARD OF THIS COUNTY?

On February 8, 1860, the Texas Legislature passed an act providing for the formation of Greer County, with boundaries "beginning at the confluence of the Red River and Prairie Dog Town River, passing north of the South Fork [Elm Fork] and following North Red River to its intersection with the 23 degree of west longitude [the 100th meridian]; thence due south across the Salt Fork to Prairie Dog River; following the river to the place of beginning. The act went into effect immediately but due to the Civil War, little was done toward the organizing and putting into effect a county government. However, in 1884, 144,000 acres of land was patented to the Day Land and Cattle Co., which also leased 203,000 additional acres. By 1884, there were some 10 families and 60,000 cattle, belonging to 7 or 8 firms that employed 100 men. The Francklyn Land and Cattle Co. owned 40,000 cattle there. In July 1886 the settlers of Greer Co. met at Mobeetie [TX] and organized on the authority of the act of 1860. Mangum was named the county seat. Soon the county commissioners began building a county jail and 2 post offices were established - 1 at Mangum and another at Frazier. A school system was set up and by 1892 there was an enrollment of 2,250 pupils.

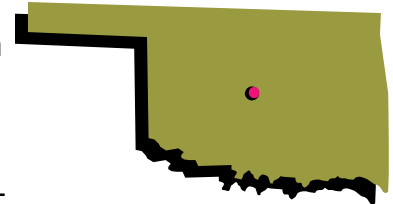


But the comparatively rapid development of Greer Co. was disturbed by a dispute between Texas and the US over ownership. The territory known as Greer County was not under the jurisdiction of Texas but under that of the United States. Greer County thus became a territory of the United States and, in 1906, part of Oklahoma.

HANDBOOK OF TEXAS ONLINE

<http://www.tsha.utexas.edu/handbook/online/articles/GG/hcg81.html>

Note: If you had ancestors in "early north Texas" this might be an area in which to do more research. **Greer County** is a county located in the state of Oklahoma. From 1860 to 1896, the State of Texas claimed an area known as Greer County, Texas, which included present-day Greer County, Oklahoma along with neighboring Oklahoma counties of Harmon, Jackson and part of Beckham.



MEMBERSHIP APPLICATION & SURNAME INFORMATION

Please fill in the Membership Application and Surname Directory information form that is inserted in the newsletter. Return it with your 2008 membership dues to SPGS. Membership dues expire December 31st of each year.

Visit the **SPGS** website:
www.rootsweb.com/~txspgs

This is a monthly publication of the South Plains Genealogical Society, P.O. Box 6607, Lubbock, TX 79493-6607, which was founded and chartered as a nonprofit organization devoted to assembling and preserving genealogical and historical materials. Membership is open to all persons interested in genealogical and historical research.

1911 Irish Census Details Now Online

After a several year project by the National Archives of Ireland, in partnership with Libraries and Archives Canada, anyone may now search the 1911 census of Ireland by first or family name. The site contains the digital equivalent of 4,000 reels of microfilm and 3.5 million images. It currently holds records for Dublin only, but project organisers plan to add the rest of the country, as well as details of the 1901 census, next year.

Each entry includes a person's education, religion, profession and place of birth. A category for "children still living" suggests some astonishing child mortality rates. Another column asks people, in the jargon du jour, if they are "deaf and dumb; dumb only; blind; imbecile or idiot; or lunatic." You can read more about the records at

<http://www.census.nationalarchives.ie/about/index.html>

The online version includes both a transcription as well as scanned images of each page. You can search the transcriptions for names, then click on a link to see the original image. The 1911 census has some interesting entries:

William B Yeates (sic), a "dramatic author and poet" was recorded in the company of Lady Gregory at Nolan's Hotel on South Frederick Street.

The return for Marjorie Dixon of Buckingham Street shows that she had lost seven of her 13 children during her 28-year marriage.

The 1911 census records of Dublin, Ireland can be found at

<http://www.census.nationalarchives.ie>

Posted by Dick Eastman on December 05, 2007

The previous article is from Eastman's Online Genealogy Newsletter and is copyright 2007 by Richard W. Eastman.

It is re-published here with the permission of the author.

Information about the newsletter is available at <http://www.eogn.com>.

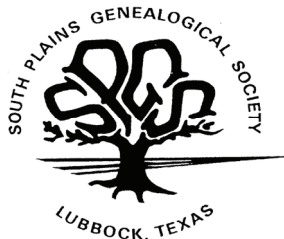
USING GOOGLE "BOOK SEARCH"

Finding books with Google Book Search is as easy as finding web-sites with Google Web Search; just enter the keyword or phrase you're looking for into the Google Book Search.

To get started from Google home page, click on <MORE> above Google Search box. Next click on <BOOKS> and it brings up the Book Search. As a test, type in <Lubbock Texas> and it will bring up a series of books containing the words Lubbock and Texas.

Click the book just like you see in a card catalogue. You might also see a few "snippets - sentences of your search term in context. If a publisher or author has given permission, you'll see full page and be able to browse within the book to see more pages. If the book is out of copyright, you'll see a full page and can page forward or back to see the full book. Clicking on "Search within this book." allows you to perform more searches within the book you've selected. You can click any of the "Buy this Book" links to go straight to an online bookstore where you can buy the book. In many cases, you can also click "Find this book in a library" to find a local library where can borrow it.

JEFFERSON CO. [KS] HISTORICAL SOC., Spring 2007



South Plains
Genealogical Society
P. O. Box 6607
Lubbock, TX 79493-6607

RETURN SERVICE REQUESTED

NON-PROFIT
U.S. POSTAGE
PAID
LUBBOCK, TEXAS
PERMIT NO. 800

Please fill in Membership/Surname
Directory form and return with
2008 membership dues to SPGS.
Dues expire December 31 of each
year.

NEWSLETTER ITEMS: Newsletter items may be submitted to Yvonne Perkins, 2107 54th, Lubbock, TX - 79412-2610 Telephone: 806-747-1319 e-mail: YvonneGengirl@aol.com
Alternate contact: Vi Zeeck at 806-794-6849 or chasviz58@sbcglobal.net

YESTERYEAR

During the years 5000 to 3000 BC, Egyptians used a concoction of powdered ashes, oxen hooves, myrrh, powdered and burnt eggshells and pumice to clean their teeth, The first "civilized" tooth powder became available to Britain in the late 18th century, but had to be fairly brave to use this unpalatable stuff.

Colgate helped revolutionize the toothpaste industry in 1873 when it introduced an aromatic toothpaste packaged in a jar. This was followed by the launch of Colgate Dental Cream in 1896, the first dental cream packaged in a collapsible tube, similar to the tubes used today. The advertising slogan, "comes out like a ribbon; lays flat on your brush" took the world by storm - and Colgate Dental Cream became the most famous and widely used dental product to the world.

WILSON-COBB HISTORY &
GENEALOGY RESEARCH LIBRARY
NEWSLETTER, Roswell, NM Vol. 4, No. 3

RESEARCHING CIVIL WAR RECORDS

The pensions for Confederate soldiers were paid by the individual Confederate states. Applications for pensions were made in the state in which the applicants lived, regardless of the state from which the veterans served or enlisted. Records are obtained from the state in which the soldier enlisted OR from the state he applied for a pension.

Pensions for the Union soldiers were paid by the US Government. All records for Union soldiers must be obtained from the National Archives and may be ordered online from the NARA site.

Pensions were paid ONLY to the veteran or his widow; never to parents or children of the veteran. YSP