



TARRANT COUNTY TXGENWEB

Barbara Knox and Rob Yoder, County Coordinators

Copyright © 2008-2009. All rights reserved.

Civil War Veterans of Northeast Tarrant County

Richard Landus Byas

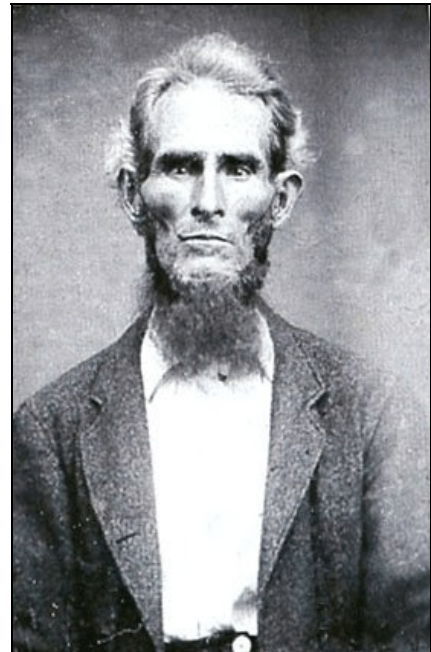
Compiled by Michael Patterson
Copyright 2008-2009. All rights reserved.

Richard Landus Byas, a son of Abram L. Byas, was born about 1842 in Claiborne Parish, Louisiana. He was a brother of Joseph L., Thomas H., and William R. Byas. In 1850 Byas was living with his parents and siblings in Bienville Parish, Louisiana (Bienville having been formed from a part of Claiborne Parish in 1848).

The Byases came to Tarrant County about 1857. When they first arrived in northeast Tarrant County, they lived on the W. A. Doty survey southwest of Bransford; which survey sat generally in the northeast corner of today's Precinct Line Road and West Glade Road.

By 1860 Richard owned one hundred sixty acres in Tarrant County in his own right. Richard enlisted in Co. A, 34th Texas Cavalry, on February 10, 1862 at Grapevine, Texas under M. W. Deavenport for twelve months. Richard is shown present in his company on a roll for January-February 1864.

About 1866 Richard Byas and his wife, Lucinda, were married. In 1870, they were living next-door to his father, Abram L. Byas, on the W. A. Doty survey. They had a single son living with them, Francis. Richard has no readable headstone in any northeast Tarrant County cemetery.



Abram Byas was the father of four Confederates, all of whom returned home after the War. They were Thomas, Richard, Joseph, and William. Abram Byas lies buried in Mt. Gilead Cemetery.