

Basic Batch Resizing for Digital Picture Frame

For this exercise we will assume you have images from your digital camera that you want to display in a digital picture frame and you have already transferred the images to your computer. The dimensions of the pictures are 3264 x 2448 and the files range in size from 3 to 4 megabytes each, there is a mix of landscape and portrait and you have rotated the portrait images to the correct direction.

The orientation of the frame is landscape and the instructions indicate the screen resolution is 320 x 240. You will have to decide if you want the portrait images to appear “Pillar Boxed” or crop the image.

See: [Pillarbox \(Film\)](http://en.wikipedia.org/wiki/Pillar_box_(film)) [http://en.wikipedia.org/wiki/Pillar_box_\(film\)](http://en.wikipedia.org/wiki/Pillar_box_(film))



The gray border represents the limits of the LCD screen in the digital frame.

Depending on how the pictures were framed cropping may work for some pictures but not for others; cropping will be covered in another exercise.

In either case it will be easier to process the images if you segregate them by orientation.

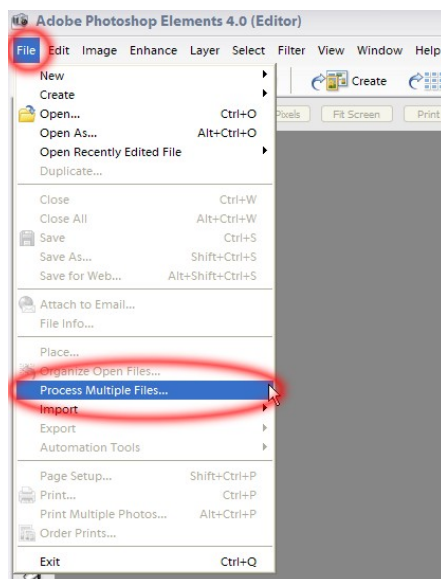
Prepare by creating a new folder; name it anything that makes sense to you.

Open the new folder and create three folders, name one Landscape, one Portrait and one Frame.

COPY the images you want to resize to the appropriate folder based on their orientation.

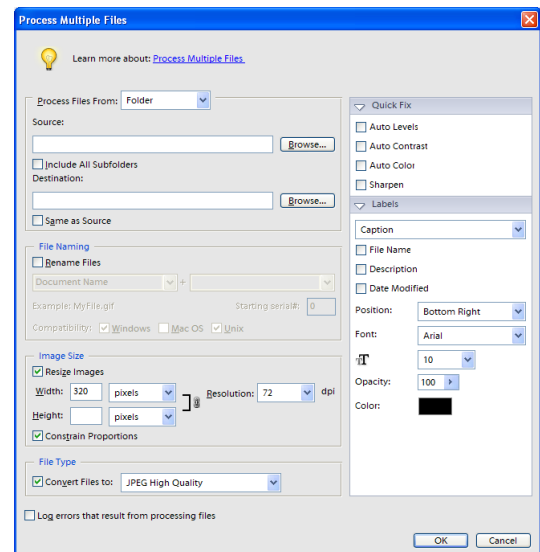
Once you have the images separated we will use Process Multiple Files function in Adobe Photoshop Elements to process the files. Files can be processed from three sources, Open Files, Folder or Import, (*we will not use Import in this lesson*). We will begin by processing the landscape pictures from a folder. Open Photoshop, but do not open any files for editing. If you have files open close them.

From the File menu choose Process Multiple Files

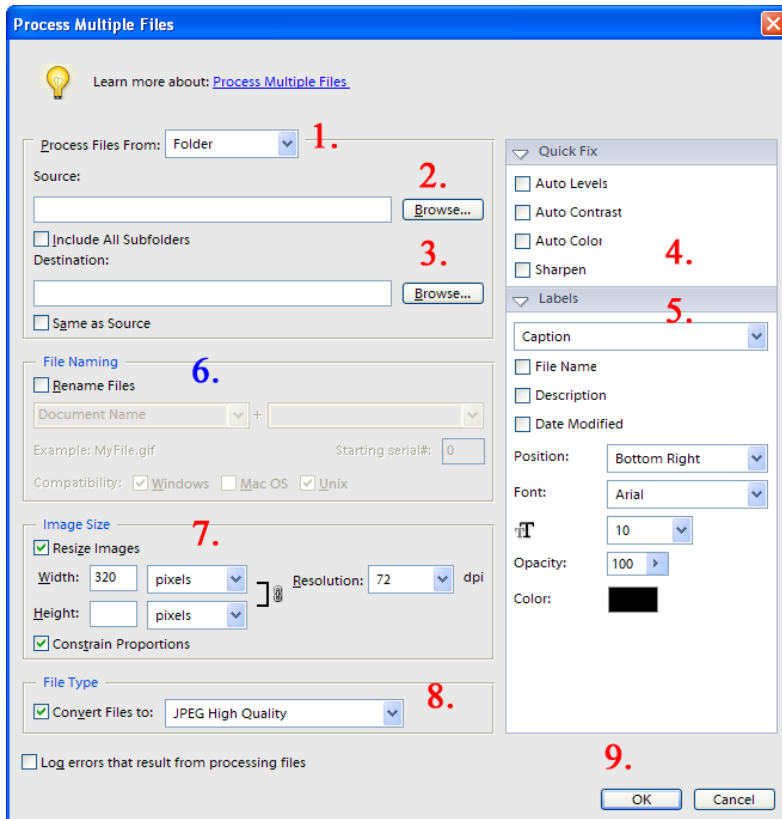


The Process Multiple Files dialog box opens.

We will use the settings and options on this dialog box to choose the source folder, destination folder, set the size, resolution and other items for the process.



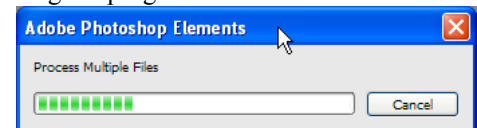
Basic Batch Resizing for Digital Picture Frame



1. If Process files From: is not set to Folder, activate the dropdown menu and choose Folder.
2. Click the Browse... button to the right of the Source: text box and navigate to the Landscape folder you setup earlier and select it.
3. Click the Browse... button to the right of the Destination: text box navigate to the Frame folder setup earlier and select it.
4. If any items in Quick Fix are checked uncheck them.
5. In Labels activate the dropdown menu choose Caption and uncheck all options.
6. We will not be renaming files uncheck the box if it's checked.
7. Check Resize Images, check Constrain Proportions, in the Width: text box enter 320, activate the dropdown menu and choose pixels, in the Resolution: dropdown menu choose 72 dpi (research indicates the LCD screen in digital frames only supports 72 dpi, anything higher is unnecessary).
8. Check Convert Files to: and choose JPEG High Quality*.
9. Click OK to begin the process.

Each file will open momentarily and then close.

Depending on the number of files processed you may see a small dialog box indicating the progress.



When the process completes you will be returned to the editor and NO files will be open.

Now we will repeat the process with Open files.

From the File menu navigate to the Portrait folder we setup earlier and open the images (3) you copied there.

From the File menu choose Process Multiple Files

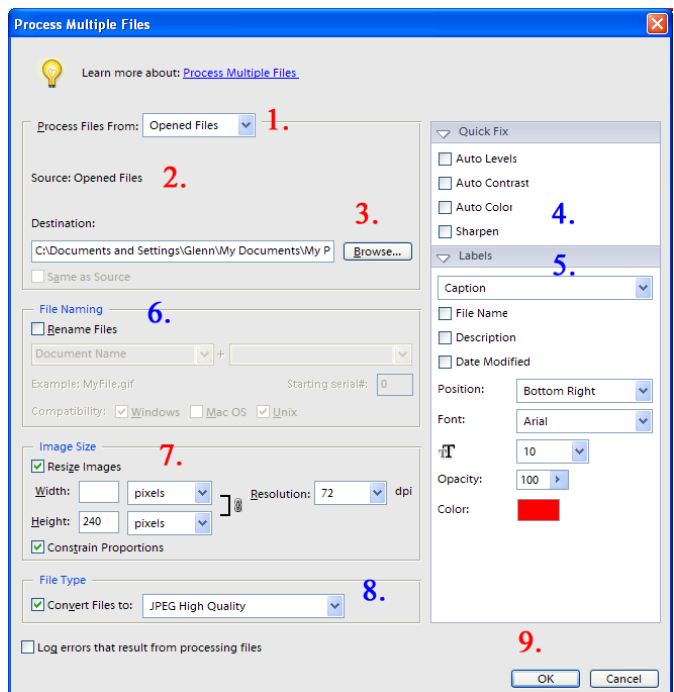
1. Activate the Process Files From: dropdown menu and choose Opened Files.
2. Note Source: indicated Opened Files.
3. Destination should still be set to the Frame folder previously selected.
4. As set previously.
5. As set previously.
6. As set previously.
7. Delete 320 from the Width: text box and enter 240 in the Height: text box, other items as set previously.
8. As set previously.
9. Click OK to begin the process.

As each file is processed it will close.

Again depending on the number of files the progress dialog may or may not appear.

The process completes when all files have closed.

* You may have to experiment with the quality setting, medium may be adequate for smaller frames, when reducing image size, if increasing size for a larger frame maximum quality may give better results.



If the results are not satisfactory delete the files from the Frame folder and start over with different settings.

Always work with copies & don't be afraid to experiment!

Screen Captures & Instructions from Adobe Photoshop Elements Version: 4.0 ~ Screen Captures edited with PsE.