



KEWAUNEE COUNTY HISTORICAL SOCIETY

HISTORICAL NOTES

Jerry Abitz, editor
Rhonda Hanson, production editor
Volume XX, No.3

Jill Dopke, co-editor
www.rootsweb.com/~wikchs
July 2008

Winner of the Governor's Archives Award 2005

If you would like to view our newsletter online please email
rhanson@doorpi.net with your email address

LESTER GILLIS (BABY FACE NELSON)

By Jerry Abitz



How does one write a story when all the information available locally is hearsay? We all know that as stories are retold, they often become embellished. That huge fish in that fish tale may actually have been much smaller when caught.

I have been aware of stories that have been circulating in this area about Baby Face Nelson ever

since I moved here in 1956. These have a life of their own similar to sightings of Elvis Presley, Bigfoot, or the Loch Ness Monster. When I became involved with the KCHS in 1971 and was taken on a tour of the museum in Kewaunee, the guide speculated that perhaps Baby Face Nelson might have occupied one to the antiquated jail cells.

I remember too, the story of how George Richard, the KCHS president in 1969, had traveled to the Dyckesville area to interview someone who may have been related. The interview was cut short when one of the individuals in Bay View, up the road a half-mile from Dyckesville, supposedly placed a holstered gun on the table. Richard did not stick around to determine any kinship of Lester Gillis, the real name of Baby Face Nelson, to the person being interviewed. When I repeated this tale to a former KCHS director who was the source of this information, she did not remember this at all. Which raises the question, who has the faulty memory?

While teaching at Wequiock School in the Town of Scott near Red Banks in neighboring Brown County, I encountered a parent, Jeanette McMonagle, who told me that her mother-in-law had Gillis as a student. Blanche McMonagle taught at the now extant Bay View School near Bay Beach in Green Bay. Recently I interviewed this lady's daughter, Carol Witchy. "Yes, that is true," she replied. "He was the only student she ever expelled for unruliness." The time frame was between 1904-1913. Later Witchy told me that the student answered to Leslie Fox, not Lester Gillis.

Lester Gillis was born in Chicago on December 6, 1908 according to his birth certificate. Could he have been Leslie Fox? Was Gillis actually enrolled in school at that point? If he was, he would have just been starting school.

His father, Joseph, and four brothers came from Belgium in 1885. This I gleaned from a ship's passenger list. Census records show the family living in Chicago in 1900, 1910 and 1920. In 1930 Lester Gillis was also listed in Chicago with his wife, Helen, and a son, Ronald.

Millie Rabas of Algoma had once mentioned in my presence that Gillis would come into town to buy gas at the station then

located where the Mobil Station is located at the intersection of State Highways 54 and 42. Recently I questioned her whether she had witnessed this happening. Her response was, "I was told that by others."

Nancy Miller from just south of Bay View said her ex-mother-in-law had waited on Gillis at Idyllwild resort in Southern Door County when she was in her late teens. Ken Deprey, owner of Deprey's Kwik Stop in Dyckesville, recently said that he had heard his father and other relatives say that Gillis would visit family in Bay View. Chris Deprey, his son, said that he had heard that Baby Face Nelson had a hideaway above the Gillis blacksmith shop in Bay View.

The late Harold Heidmann, the former owner of the *Algoma Record-Herald*, and KCHS director, George Miller, did some investigative work. They interviewed people in the Rosiere and Red River area. Both of these Kewaunee County locales are frequently connected with these stories. One report on file is that August Gillis, a farmer on County Road C, sold his farm in 1902 and moved to Chicago. This informant was sure that August was the father of Lester Gillis.

While monitoring the KCHS display at the annual Ag Heritage Days every September at the Luxemburg Fairgrounds, I would visit with a couple who always were there selling Watkins and Stanley Home Products. Joe Ruben told me that his grandmother had lots of stories about Gillis. Unfortunately because I was attending the KCHS display, I never had a chance to hear any of these tales. I did pass Ruben's name off to George Miller as a person of interest and should be interviewed. However, no one ever did. Several years ago, Ruben and his wife, Bernice, lost their lives in a fire at their home.

About ten years ago while visiting in the Ron Opicka home just north of Lincoln. I was told that when the police were seen as closing in on the gangs in Chicago during Prohibition Days, Gillis would hide out on Robin Lane in the Town of Lincoln. The building where he stayed is no longer there.

It seems everyone has a Baby Face Nelson tale, none of which is ever mentioned in any biography that I know of. Those all mention hideouts in Northern Wisconsin such as Little Bohemia. But in this area many assume he had a hideout in Southern Door County based upon stories repeated to them by parents, grandparents, or relatives. Some stories list him as staying with relatives in the Tonet area and actually playing on their baseball team.

But trying to locate valid information is like trying to pick up mercury from the floor. An article on Baby Face Nelson, which appeared in *The Door County Advocate* on December 9, 1994, decided no conclusions could be drawn. No eyewitnesses exist because of the elapse of time, facts appear somewhat hazy, and tales get better with the frequency of being retold.

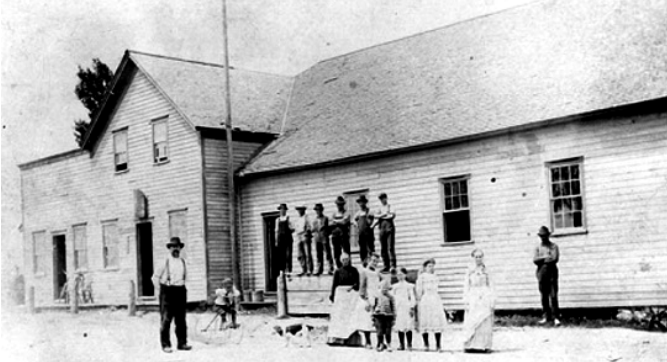
If you have heard any stories about this illusive guy, please contact me gabitz@centurytel.net or at my home address listed on the cover of this newsletter. ■

WAVERLY GARDENS AND AUGUST'S MOONSHINE

By Jill Dopke

While researching taverns of Kewaunee County, Mary Reckelberg had the opportunity to talk with Joyce (Pagel) Kinjerski who shared some memories of Waverly Gardens and her father, August Pagel. With additional research by Wes Cox, following is a small part of the history of Waverly Gardens during Prohibition (1920-1933). Like many saloons and dance halls of that time, moonshine was a vital part of their continued survival.

Waverly Gardens was located in West Kewaunee Town on Cty. C in Ryan where Donald Kudick now lives.



Waverly Gardens - In 1889 Robert Pavlat built a store, tavern and dance hall in Ryan. Proprietors that followed were Joe Pavlat, John Hruska, Stephen Putz, Wencel Opicka, John Marsichek, Anton Marsichek, Bill Klicamp, Wencil Pavlik, John "Jack" Smith, August Pagel, Thomas Kinjerski, and Albert Muchowski.

In 1926 August and Elizabeth Pagel purchased it from Jack Smith and called it Pagel's Hall. In 1928 August changed the name to Waverly Gardens. He sold it to his daughter, Joyce, and her husband, Tom Kinjerski, in 1945, and they operated it until selling it in 1954 to Albert and Lone Muchowski.

Joyce said that her father, August, made moonshine during Prohibition in his former house in Two Rivers and in Ryan for his tavern business. In Ryan he made the moonshine in a concealed room at the end of a long barn he owned across the road from the tavern. He also kept cows and chickens in the barn.

The recipe August used has long since been lost, but Joyce, remembers her dad boiling it in a big copper kettle on a kerosene stove. Made of barley, hops, yeast, and sugar, it had to be boiled a long time at a certain temperature then cooled and strained through felt before selling it. When August got the barley from Seyks in Kewaunee, he had it mashed so it would look like it was going to be fed to the chickens and pigs.

August delivered 5 gallon jugs of moonshine to Worachek's Saloon and dance hall in Norman, to Herman Kratz's Saloon in Luxemburg, and to many taverns in Kewaunee County. Soon the bar owners were coming to Waverly Gardens to buy and transport it themselves. After prohibition was repealed, the beer was made by Kewaunee Bottling Works owned by Charlie Hopp's father.

Of course, during Prohibition everything had to be brewed and sold by word of mouth, and as was apt to happen, someone "squealed" on August's moonshine business. The feds arrived one day, and they thought they knew just where to look - in the bar and behind the wainscoting in his living room. They did just that, but they were unaware that August owned the long barn across the road where the still was located, and they never looked there.

August heard the feds were coming and immediately cleaned out the concealed compartments behind the wainscoting and hid the moonshine under the dance hall which had a ground floor. The outside door to it was littered with junk to deceive.

The feds went through the house with flashlights probing all the wainscoting looking for cracks in the boards to detect the hidden liquor. August forgot one bottle in a compartment, but the feds didn't see it. When they left the house, they took at least six freshly made blood and liver sausages which were hanging to cool between two chairs in the living room. Elizabeth was so angry she wanted to go after them, but August said it was better to keep quiet so they'd go away.

Waverly Gardens hosted weddings, kermises, harvest dances, meetings and even medicine shows. The first time Romy Gosz and his polka band were hired in the late 1930's, he charged \$75. Ladies got in free. Men paid 10 cents. Beer was 5 cents and whiskey was 10 cents. Kids thirteen or fourteen could get beer, and they behaved or got kicked out. George Ouradnik

and Bill Lazansky, big guys, were door tenders.

However, only the men came into the tavern.



August & Elisabeth Pagel

The ladies stayed outside or came into the living room where August would bring them their drinks.

A fire destroyed Waverly Gardens in 1962, and Albert Muchowski never rebuilt. Today Waverly Gardens is but a memory in the hearts and minds of those fortunate enough to have tasted August's moonshine and danced to the music of Romy Gosz. ■

THE SPIRITUALIST CEMETERY IN KEWAUNEE COUNTY

By Bruce Vandervest

Belgian immigrants, Frank "Francois" Jaque/Jacque (1837-1908), and his brother-in-law, Desire LaCourt (1837-1918), established a Spiritualist Church near Luxemburg shortly after the Civil War. Desire had been mobilized in the 19th Wisconsin Infantry, but was found to have heart problems and dismissed from service. He returned home and along with Frank Jacque and other followers broke away from the Catholic Church. They turned an old house in Walhain, just west of Luxemburg, into a Spiritualist Church with Frank Jacque as the minister.

Spiritualism is a belief that the spirits of the dead can communicate with the living. It is an ancient belief that has existed since the dawn of human history. By the means of a person known as a medium going into a trance-like state, communication with the dead is supposedly possible. Many of the manifestations of Spiritualism have been proven to be trickery. Harry Houdini duplicated by purely physical means that which was said to be "psychic" phenomena. However, there are still certain manifestations for which no satisfactory explanation exists.

The Spiritualist Cemetery, also known as the French Spiritualist Cemetery, is located on the Jauquet farm on Hillview Rd. just west of Luxemburg. Frank Jacque originally owned an 80 acre farm on part of that land. On Sep. 21, 1885 he deeded about a quarter of an acre to the Spiritualist Society of Walhain to be used as a cemetery for the Church.



Spiritualist Cemetery

The cemetery is well cared for by the Jauquet family although the lilac bushes are trying to take over the property. They do not have family buried in the cemetery but are generous and respectful enough to take responsibility for its maintenance. The names on the gravestones are names that could be read out of our modern telephone book; Barbiaux, Boulanger, Fochion, Gaspard, Jacque, LaCourt, Melera, Petry, VanDresse, Vincent, and Pinchart. Pinchart is a name that is prominent in my own family tree. I don't know if Charles A. Pinchart, Sergt. Co. H. U.S. 34th Inf., was a relative of mine or not, but I wonder if he had red hair because my own red hair comes from the Pinchart line.

The Spiritualist Church disbanded sometime in the early 1900's, and the church building was torn down in the 1920's. All that remains today is the cemetery. One of the reasons for the demise of the congregation was an episode that happened in Door County. An over zealous member of the sect cut off his hand to test the power of the cult and he died from his wounds. The faith of the following was shaken, and they stopped attending.

Spiritualism survives to this day in various churches and in the New Age movement. If the people buried at the Spiritualist Society Cemetery can hear me: Rest in Peace.

Note: James Jacques provided some details for this article and is looking for more information about his grandfather, Frank Jacque – his village of origin in Belgium, parents' names, and etc. You may contact him at: jambeau84@sbcglobal.net ■

BEER STEINS

By Jerry Abitz

Other than their intrinsic value as a memento, most do not place a high value on beer steins. They run the entire gamut from cheap knockoffs produced today in China to very intricate designs from Germany from the 19th or early 20th century. They can be very utilitarian or very ornate. Most have covers to keep insects out or to keep the contents cool. They also will have a thumb lifter to easily access the contents.

Mention a "beer stein" to a German and they will give you a quizzical look. What in the heck is a beer stone? They know them as a *Bierkrug*, a beer mug. They are a symbol of the past for most beer in consumed in Germany today is in glasses with a marker on the side mandated by law so the bartender cannot cheat you out of a full glass.

The really valuable steins are regimental steins, which have a story to tell. Viewers of *Antique's Roadshow* know all about this as provenance. In the days of our German ancestors, every able-bodied man was expected to serve in the Kaiser's army. Upon their discharge they would be issued a stein designed for their regiment. On the sides of the mug would be written the names of those serving with them, the dates of service, and the area of service.

A genealogist with German ancestors cannot determine where their ancestor served since there are no central German archives with this information.

Imagine the value if you had your great grandfather's regimental stein? It would also open a window telling something of his life besides dates of birth and death.

Some time ago I was approached by Scott Vlies of rural Algoma. He had been given an unusual beer stein by a Milwaukee friend. Its history was unknown other than it had been owned by the deceased father of his friend. Vlies had seen a display of similar steins in Milwaukee so he had some idea that it had value as a collector's item. Scott wanted me to translate the German on the exterior. I agreed to do so.

Note the mounted calvary member atop his horse on the cover as shown in the photo. His was for an individual whose family name was Gross who served in the Trier-Strassbourg area on the western border with France and Luxembourg from 1894-1898. (Strasbourg today is in Alsace, a province taken by Germany in 1871 in the Franco-Prussian War and returned to France after World War I). Listed on the stein were all of his comrades in arms.

I sent photos and information to a German pen pal who lives near Trier. He was able to tell me where the stein may have been made. He said that the regimental stein was a memento given to their comrade-in-arms as they were being discharged.

Neither Scott nor the friend who gave it to him could make any connection to the family listed. One is left to conclude it was "liberated" by an American GI in the confusion at the end of World War II. It is valuable enough that Scott decided not to use it to store pennies, but wishes he could connect to the Gross family in Germany. ■



Regimental Beer Stein

ELIZABETH CLEMENT GRANDDAUGHTER OF QUEEN MARINETTE BURIED IN SCARBORO

By Jill Dopke

It seemed like a simple task. Check on newspaper accounts from 1907 in the Kewaunee Enterprise and Milwaukee Daily News about the death of Elizabeth Clement, Indian Royalty, in Kewaunee County. Both articles said that Elizabeth Clement, who died Monday, Sep. 9th, 1907 and was buried in Bunker Hill Cemetery in Scarboro, was a daughter of Queen Marinette. In fact, she was a granddaughter of Queen Marinette.

Queen Marinette was born in what is now Langlade County in 1793 to a French Canadian Voyageur, Barthelemy Chevalier, and Louise, a Chippewa Indian. Barthelemy's grandmother was a Menominee Indian. Marinette had a "contractual" marriage in the presence of a local French Magistrate at the age of 14 to Jean Baptiste Jacobs, a French Canadian fur trader. It was common for the fur traders to take Indian wives since they worked and lived among the Indians. These marriages were contracted for a season or more, considered legal by both parties and strengthened the Indian and fur trader alliance. Marinette learned the fur trade business at Jean's trading post, eventually ran the post herself and dealt fairly and compassionately with the local Indians throughout her lifetime.

The city of Marinette was named after her and “Queen” was added to her name out of respect.

Ancestry Chart of Elizabeth (Provencal dit Carbonneau) Clement

Barthelemy Chevalier French-Canadian & Chippewa	&	Louise Menominee
Marinette 1793-1865	&	1st Jean Baptiste Jacobs 1785-1835
Mary Polly 1811-1839	&	Antoine Provencal dit Carbonneau 1804-1885
Elizabeth 1829-1907	&	2nd Robert (Dosithee) Clement 1836-1901

Little is known of Queen Marinette’s granddaughter, Elizabeth, or “Libbie” as her friends referred to her, or Robert, her husband. Elizabeth was born in Green Bay, and Robert was born in Trois Rivieres, Quebec, Canada, the son of Julie (LaFreniere) and Romain Clement. His given name was Dosithee, and his ancestors emigrated from France to Canada in the 1600’s.

Robert left Quebec as a young man to work the seasonal lumber fields in Northern WI where he probably met Elizabeth. In the off season, his home was Scarboro where a small group of his friends and relatives from Trois Rivieres had settled. His obituary states, “One spring he returned from his winter in the north woods bringing with him a half-breed Indian woman who was known as his wife.” Robert and Elizabeth may have had a “contractual” marriage, but they weren’t married legally until 1890 in Kewaunee County.

“Clemence” Tombstone at Bunker Hill Cemetery, Scarboro



When Robert and Elizabeth settled in Scarboro to farm, the village was a small example of the changes going on all across the WI frontier in the 1800’s. For centuries the Indians had dominated the land. Then in the 1600’s the French Canadian Fur Traders arrived. Over the next 200 years these two cultures mingled, intermarried and created a new mixed blood culture sometimes identified as Creole, but more often referred to as Métis.

When the demand for fur came to an end in the early 1800’s and the Yankee and European immigrants descended upon the frontier, a new way of life began to emerge. These newcomers wanted to buy the land to use if for farming, fishing, and lumbering. In addition, the Federal Government was anxious to sell the land to pay debts incurred in the Revolutionary War and the War of 1812. Through a series of treaties the land was sold and the Indians were sent west to reservations. Some French Canadians and Métis followed while others chose to live as white alongside the newcomers taking up the new occupations of lumbering, fishing, and farming.

Robert, a French Canadian and Elizabeth, a Métis, were a part of this changing frontier and settling in Scarboro was a wise choice for it seemed Scarboro was accepting of many cultures. Among its early settlers and landowners were a mix of the old and the new. The French Canadians and Métis names included Bastian, Bunker (Verbonceur), Clement, Langlais, Provencal, Thibaudeau, Trudell, and Vanouse. Yankee and European immigrant names included Dax, Decker, Diring, Duescher, Grimmer, Kumbera, Krcma,

Kalhoefer, Larkin, Miesler, Novak, Peot, Pravachek, Slauson, Salentine, Schneider, Smetana, Smith, Tuma, and Veaser. In the tiny village of Scarboro all of these cultures lived together peacefully from all accounts and prospered. Today many of these families still live and work in the area.

Little is known of Robert and Elizabeth despite the fact that their families had lived in North America for 100’s perhaps 1,000’s of years. No pictures of them remain, and they had no children together, though Elizabeth had been married before so she may have had children. Like many of the earliest settlers, their names have faded into quiet anonymity. The only reminders that they lived at all are a couple of newspaper clippings, scattered vital records, and a gravestone in Bunker Hill Cemetery in Scarboro that reads simply “CLEMENCE” The finer print has been erased by time.

Note: I referenced two essential books for this research. The first, “Queen Marinette: Spirit of Survival on the Great Lakes Frontier” by Beverly Hayward Johnson, is a biography of Marinette and her life on the frontier. The second is a reference book, “The Wisconsin Creoles” written and published by Les and Jeanne Rentmeester. It traces the French Canadian, Métis, and Indian history and families of the Northwest Territory from the 1600’s to the mid 1800’s. If you like history or believe you may have French Canadian, Indian, or Métis ancestry, these books are must reads. ■

NEWS FROM THE RESEARCH CENTER

By Virginia Johnson

Hans Nell presents KCHS President Thomas Schuller with a \$500 check from the proceeds of *The Commercial History of Algoma*, a book he authored with Virginia Johnson and Ken Wolske.



Algoma Public Library was also a recipient of the proceeds. ■

Congratulations to 2008 Shanty Days honorees Merle and Kathy Colburn who are being recognized for their continuing contributions to Algoma.

Merle has been the video history cameraman since George Miller instituted the project. Merle and Audrey Krautkramer continued the project and have been working together for the last 5 years. In addition to generously donating time to KCHS, Merle, a retired music educator, directs the Peninsula Chamber Choir, has served as a councilman and videos city proceedings. Both Merle and Kathy have a long list of involvement and we salute them. ■

Janesville’s Parker Pen Company

Who could believe that Janesville’s Parker Pen Co. had roots in Ahnapee, now Algoma? During the early 1880’s Will Palmer, son of S.C. Palmer, onetime owner of the *Record*, conducted a telegraph and post office in the building now housing Algoma Mercantile. Palmer was born in Racine and arrived in Ahnapee as an 8 year old. He remained until 1882.

Palmer and Mr. Parker started their fountain pen company in 1892 in their Janesville hotel room. Palmer, who was working as an insurance salesman, furnished the money and Parker supplied the patent. Parker had been an instructor in telegraphy and arrived at his ideas about a perfect pen while repairing different makes used by the students in the school.

The pen was originally manufactured in the east but within the first six months the demand became so great that then men opened their own factory. Twenty years later they were employing over 100 men and were turning out ½ million pens yearly to an international market.

At one time Parker Pen's Main Street factory was the largest writing instrument plant in the world. The company eventually sold the pen business to Gillette, and no longer operates in Janesville. It is now owned by the British company, Sanford. ■



Book Review

Lives and Legends of the Christmas Tree Ships

By Virginia Johnson

Fred Neuschel's recently released *Lives and Legends of the Christmas Tree Ships* is the 6th book on historical Algoma in as many years. Each of the books has a different approach. Neuschel's is the only one focusing entirely on maritime history.

Neuschel's title is somewhat misleading as it suggests that the book revolves around the Christmas tree ship voyages, however he effectively uses the various Christmas tree ship captains to chronicle the city's maritime story. This must read is a well-documented, scholarly, non-fiction work that flows and reads easily, much like a novel. Chapter endnotes provide the reader not only with documentation, but also with sources for additional reading.

Algoma's most famous tree ship captain is Herman Schuenemann who was born in Ahnapee and grew up on the family farm in the area of today's Church and Arlington Streets. Herman and his older brother August both went to sea. They, and such captains as Henry, Sibilsky, Schmilng, Doak, Armstrong and Dingman, carried grain and wood products. But it was that last voyage of the season, taking trees from Northern Wisconsin and the U.P. to the German settlers in Milwaukee and Chicago that often brought as much money as a season's work. August went down on the *S. Thal* in 1898, however it is Herman and the sinking of the ill-fated *Rouse Simmons*, in 1912, that is romanticized in story, song, and even musical theatre.

Early Ahnapee residents envisioned a city destined to be an important lake port with a great economic future. For a while, things were looking good but an impenetrable ridge of limestone in the harbor and the opening of the Sturgeon Bay ship canal shattered the community's dreams. The coming of the railroad, a story in itself, was the final blow. Neuschel became enamored with Algoma when he and his wife Sue stopped years ago. A chance visit to a local shop brought an introduction to the late Harold Heidmann, with whom Neuschel formed a close relationship. It was Heidmann who taught him Sheephead, while mentoring him in the area's rich history.

Neuschel, a chaplain by day, is the author of numerous articles on maritime history. He points out that Ahnapee/Algoma was the capital of the maritime Christmas tree trade. It was his research that brought attention to the fact that 8 Ahnapee/Algoma sailors were a part of 44% of the Christmas tree voyages to Milwaukee and Chicago.

Neuschel was in Algoma for the dedication of Christmas Tree Point in December 2002 and portrayed Capt. Schuenemann, known as Captain Santa, for the 2004 Lakeshore Maritime Fest. As a storyteller, he has portrayed Schuenemann numerous times for programs in Wisconsin and Illinois.

Neuschel and author Rochelle Pennington are extensively interviewed in the Weather Channel's *Storm Stories* series on the Christmas tree ships. The program also credits Kewaunee County Historical Society which allowed use of its photographs for the documentary.

Neuschel published a small book on the life of Schuenemann in addition to his maritime articles, which have appeared in *Anchor News* and *Wisconsin Historical Society* magazine. ■

Luxemburg Now and Then 1937 and 2007 is July's silent movie at the Research Center. The movies begin at 1:00 on Friday, July 18, 2008. There is no charge for this event, which is open to all. ■

Trygvie Jensen, author of *Wooden Boats & Iron Men*, a History of Commercial Fishing, presents the Shanty Days' program at the Research Center, 219 Steele St. in Algoma, on Friday afternoon, August 8, 2008, at 1:30. Names such as Albertson, Bohman, Cornell, Hickey, LaFond and Wenniger are only a few of those about whom Jensen has written. Jensen's slide and story presentation is free and open to all. A reception and book signing follow the program. ■

KCHS T-SHIRTS AVAILABLE AT THE RESEARCH CENTER AND BY MAIL



The Kewaunee County Historical Society now has t-shirts available at the Research Center. They are Navy with gold lettering and a gold and copper design located in the upper corner on one side of the t-shirt and a pocket on the other side. **Cost is \$12 for M-L-XL and \$14 for XXL.** They can also be purchased through the mail by contacting:

Jill Dopke
E2664 Rocky Ct.
Kewaunee, WI 54216

Add for shipping/handling

- \$3 for One t-shirt
- \$5 for Two t-shirts

Make check or money
order payable to
Kewaunee County
Historical Society



Northeastern Wisconsin Czech Festival

By Orv Konop

The Northeastern Wisconsin Czech Festival will be held Saturday, August 2nd, and Sunday, August 3rd, at the Kewaunee County Ag. Heritage Farm located at N2251 State

Road 42, Kewaunee Wisconsin. Due to the growing attendance and the generated interest in the Northeastern Wisconsin Czech Festival and the Heritage Farm Czech Fest and Kolache Festival, the two events will be held together at the Heritage Farm.

Plans for **Saturday** are to start the day with a Kolache Festival and Bake Off. Kolaches will be for sale throughout the day, with many homemade fillings and a new filling developed for 2008. Other Czech foods and refreshments will also be available throughout the afternoon. Baking demonstrations and a kolache bake off will conclude the morning programs. The afternoon will consist of entertainment, presentations of Czech culture and heritage by Joel Blahnik, singing by The Czech Choraliers, public dancing to Czech music, Czech exhibits in the Heritage Farm School, antique farm machinery on display, vendors selling Czech crystal, cookbooks, and other Czech related articles. Gift articles will also be available in the Heritage Country Store. A fun day for those that would like to be a Czech for a day. Enter your baking skills in the Kolache Bake off by contacting Joann Vogel at the Kewaunee Heritage Farm, (920)388-0604 for more information. Admission for this day of entertainment will be just \$7.00.

Sunday will start off the day with a Polka Mass at 10:30 with Father Bill O'Brien and the OK Combo providing the Polka Mass music. At 11:30 a Czech Festival dinner will be available serving sauerkraut, dumplings, coleslaw, pork roast, mashed potatoes, vegetable and dessert. Refreshments will also be available.

Advance ticket price for the dinner and a complete day of entertainment will be \$16.00 and a price of \$18.00 at the door. Advance tickets will be available at the Kewaunee Heritage Farm or by calling (920)432-1556. General admission for the day will be \$7.00. Dancing to the music of Orv Konop and the OK Band will begin at 1:00 to 5:00 with guest performers appearing throughout the afternoon. Czech entertainment will also be provided throughout the day in the Heritage Threshing Barn and Stable with vendors of Czech Heritage available. ■

BANK OF LUXEMBURG

By Jerry Abitz

During the week of June 9-13 of this year, this historic building on Main Street met its demise. It stood at this location since 1916 servicing the needs of the community. In 1985 an addition had been added to this Foeller & Schober designed building to accommodate growth.

Since then this bank has grown to include a number of branch banks located from East Green Bay over to Forestville in Door County. The number of employees has grown accordingly to offer the services required by a full service bank. Employees were working in a crowded basement and something needed to be done to provide additional space.



Demolition of Luxemburg Bank

Last year construction began on a three-story replacement building on the eastern half of the block where this bank was located. Stories soon were circulating that when completed, the old building would be sold. However, the 1985 addition would be removed because the bank needed the room for parking according to the stories. One could ask, "Why did they build here where space was limited? Did they consider other sites?"

The Luxemburg area is trying to establish a library and this building was offered as a potential site. When a consultant examined the space, that idea was scuttled as being unsatisfactory.

According to Lois Hoida, one of the bank's directors, the bank was offered for sale on the Internet as well as through realtors. With no visible interest, the decision to demolish was made. The KCHS had placed one of its heritage signs on this building in 1996. Part of the wording was. *"Its large size and ornamentation were unusual for a small village. Few external changes were made to the building until a major addition to the north was completed in 1985. At that time it was placed on the National Register of Historic Places."*

Despite what the sign said it was never placed on this list. John Slatky said that their lawyer had investigated and found this never happened. Speaking with Duane Pike, the bank president when this construction took place in 1985, he agreed that this action never happened either. However, they used National Register standards in the 1916 building remodeling and restoration project to get tax credits on work done.

The building is gone. Many residents were shocked when the building was razed. A number of people showed up with cameras to record its demise. I, myself, took about 15 photos for our archives. As I write this, the part housing the vault is still visible as is the rubble-filled basement.

Plans are being made to have a veterans' memorial on the southwest corner of the block. While plans are incomplete, it will include the bank's name removed from the building and a bronze plaque. Hoida stated they want to develop the area as the village square, something Luxemburg has never had.

One of the events scheduled for this area is part of the Luxemburg Centennial. The public is invited to a free corn roast and the Bob Rivers Band will entertain for the entire evening on Saturday, August 9th in the Bank of Luxemburg parking lot. ■



New Bank & Old Bank Vault on the right

LUXEMBURG CENTENNIAL

By Jerry Abitz

The original settlers to this area arrived in 1859. The settlement grew up around the present day intersection of Church Road and Main Street. Older residents will remember this as South Luxemburg before it was incorporated into the village.

In the 1890s the Green Bay and Western Railroad was built connecting Green Bay to the Lakeshore communities of Kewaunee, Algoma, and Sturgeon Bay. It did not go through the existing settlement, but passed to the north a short distance away. Supposedly this was because of the terrain, but it may have been influenced by other factors.

A new community sprung around the depot. In 1908 this settlement incorporated as Luxemburg Village. One hundred years later a celebration is planned commemorating this event.

A *Dairy Dash* was conducted on June 4th as part of June Dairy month. On Saturday, August 9th the public is invited to a free corn roast and the Bob Rivers Band will entertain for the entire evening in the Bank of Luxemburg parking lot.

Work is progressing on Fireman's Park across the street from the Village Hall on Maple Street. According to Len Lemens a lot of new equipment has been installed by the Luxemburg-Casco Problem Solvers, a group of students from LC High School. Existing equipment and the tennis and basketball courts have been refurbished. A new flagpole and signage has been erected. A dedication of this park will lead off the festivities on Saturday, August 23rd when a time capsule will be buried.

From there the celebration shifts to the Luxemburg Fairgrounds. Rides will be provided, the food stands will be open, and various displays will be shown. There will be antique cars and tractors on display and activities will be available for children. A petting zoo and pony rides will be provided. At noon the Community Band will play. In the afternoon cemetery walks will take place at both St. Mary's and St. John's Cemeteries. Ray Rollins Polka Band will play in the afternoon and Haze/Southern Gypsy (Classic & Country Rock) will perform in the evening. There will be a fireworks display in the evening.

The event continues into Sunday with a parade in the morning. Displays and events from Saturday will be continued at the Fairgrounds. The Dorf Kapelle will perform the entire afternoon. The festivities are scheduled to end at 5:00 p.m. Handouts are being sent out with a calendar of events. ■

NEW KCHS DIRECTORS

By Jerry Abitz

After going for over a year with board vacancies, we have acquired three new directors within a matter of two months. This highly unusual feat has never happened before. The newest directors are Lori Birr, Bevan Laird, and Al Briggs.

Lori Birr, who lives in Algoma, is the daughter of a former Luxemburg-Casco schoolteacher. She was raised in Green Bay where she graduated from St. Joseph Academy. She received a degree from UWGB in Fine Arts and French. She has a master's degree in Museum Studies from the University of Sydney in Australia. She has taught in Ithaca, Wisconsin, near Richland Center, and in international schools in Krakow, Poland and in Manila in the Philippines. She recently moved to Algoma to be near the art scene in this area. Lori is a skilled photographer and has taken photos of barns in the Town of Carlton for the KCHS. Some of her work is currently on display in the window at the KCHS Research Center in Algoma at 219 Steele Street.

Bevan Laird is a transplant from the Grand Rapids, Michigan area by way of Central Wisconsin. Employment of her husband in Two Rivers brought her to this area. She has a master's degree in reading and is employed by the Kewaunee School District. Her unusual first name is a common Welsh name as well as a family name reflecting her heritage, which also includes ancestors from Scotland. She has an 11-year old daughter and lives in rural Kewaunee with her husband,

Richard. She was recruited for the KCHS Board by fellow board member, Don Honnef, who attends the same church in Algoma.

Al Briggs was raised on a farm near Lamartine, southwest of Fond du Lac. He is a graduate of Garrett Seminary in Evanston, IL and was ordained as a Methodist minister. He served ten different congregations in various parts of Wisconsin during his career. His last assignment was servicing the West Kewaunee Methodist Church as well as the Algoma United Methodist Church from 1986 to 1991.

He retired after this assignment and continued living in Algoma. He is also an expert blacksmith and is a member of the Upper Midwest Blacksmith Association, a 300-member group of practicing blacksmiths. He worked as a reenactor blacksmith at Heritage Hill State Park for 13 years. He has his own shop and does some simple contract work, but confesses activity is now mainly a hobby. The Heritage Farm has recruited him to plan a blacksmith shop at their location south of Kewaunee.

Briggs was recruited as a director also by Don Honnef ■

KCHS ANNUAL FUND DRIVE

By Jerry Abitz

Our records show that the following individuals, families, or businesses have donated since the previous newsletter has been published. If you have donated and your name does not appear, this reflects what has been received up to June 25th. Anything received after this date will be acknowledged in the next newsletter. It has been very gratifying to see the generosity of our friends. For those who included notes thanking us, we acknowledge the complements. We hope we can continue to ferret out information from our past to whet your appetite for local history..■

Benefactor-\$100.00 or more

Helen Clinton	C.R. & Pat Kannewurf	Mike Sfat
ICS Cutting Tools	Mary Ellen Konop	Dennis Steinert
Lorna Jaconi	Randy & Sandra Kudick	James L. Toppe

Patrons-\$50.00 to \$99.00

Mary Bohman	Ruth Leszczynski
Richard & Susan Braun	Bill & Connie Roethle
Tom Dörner	Roger & Carol Ruhlin
Rosemary Glaser	Milton & Marilyn Schleis
Nada & Harmon Graves	Eileen Slaby
	Mary & Bob Webb

Family-\$25.00 to \$49.00

Lloyd & Carol Allan	James & Joyce Lampereur
Edward Bisely	Marie Mach
Carol & Marvin Bourgeois	Violet McCosky
Mark Buchanan	Peggy & Jerry Miesler
Al & Millie Burkey	George F. Miller
Caffé Tlazo (Jenelle & Mike Glime)	Susan & Paul Reince
Wesley S. Cox, Sr.	Patricia S. Rolfe
Janice L. Dart	Shaun & Brad Schmillng
Dee & Pearl Erickson	Ann & Larry Schmitz
Mr. & Mrs. Patrick Farrell	Pete & Jan Servais
Ronald & Tere Fassbender	Hank & Shirley Severin
Joseph & Ruth Fierst	Phyllis Slatky
Forest Construction	Bruce & Chris Steinhagen
Marvin & Muriel Gruetzmacher	Eric & Joann Swanson
Gerald & Mary L. Guth	Ernie & Janice Teske
Charlotte Hackman	Bruce Vandervest
Carole & Richard Hanaman	Mark & Nancy Vandervest
Darrell & Arleen Jadin	Tom & Linda Vogel
Linda Jerabek	Joseph & Cora Walag
Glen & Marian Koehler	Glenn & Bonnie Willems
Jeff and Lindy Kowalchuk	Peggy Wussow
Maynard & Ethel Kuehl	
Ausdauer Kennels-Jeanette & Kent Makela	

Individual-\$10.00 to \$24.00

Ila Abitz	Lorraine Kohlbeck
Bruce Annoye	Orville & Althea Krueger
David Annoye	Mark Ledvina
Edward Aude	N. Lensmire
Joan Bares	Nancy C. Leurquin
Alvina Bargmann	Ray & Dodo Liebl
Adeline Bauer	Allen J. Luedtke
David J. Chada	Chet and Dottie Majeski
Rich & Bess Cmeyla	Ed & Catherine Mastalir
Gladys Ciha	Marie Miller
Machael & Jayne Conard	Ralph & Nancy Miller
Marge Curtin	Harold Nell
Marie DeBaker	R. Neseemann
Vivian Derenne	Emily Nielsen
Roger & Veronica DeVillers	Edward Plansky
Beverly Diefenbach	Bernice Reckelberg
Leonard Dvorak	Bill Schinderle
Gale Fameree	Scott Schanhofer
Arleen M. Fitzgerald	Bob Sell
Ronald C. Flemal	Dennis E. Staral
Della Fox	Eunice Siebert
Nancy Grothman	Irma Seidl
David & Judy Hafeman	Dorothy W. Stangel
Dorothy Holub Heidmann	Dale Swoboda
Joyce B. Heinrich	Mary Ann & Wayne Thiry
Jeanne Hoppe	Norbert & Gertrude Waterstreet
George E. Jerovitz	Janet Willems
Willard Jost	Robert & Evoyne Yunk
Shirley Kirchman	Tammy Etienne Zekany
Ralph & Mary Kline	Erlah Zimmerman
	Ethel Zimmerman

Board of Directors

All Area Codes are 920

Jerry Abitz	866-2719	Don Honnef	388-3904
Lori Birr	487-2560	Darlene Mueller	388-0117
Joe Blazei	388-3038	George Miller	487-2373
Julie Bloor	487-2348	Mary Reckelberg	845-2465
Carl Braun	487-9813	Marilyn Schlies	388-4303
Al Briggs	487-3884	Tom Schuller	388-3858
Jill Dopke	388-2830	Judy Srnka	487-5728
Dona Fischer	487-3484	Larry Swoboda	845-2181
Bevan Laird	388-2519		

*Tom Schuller ... President *Jerry Abitz ... Vice President
 *Joe Blazei ... Treasurer *Julie Bloor ... Secretary
 *Darlene Mueller ... Curator *Carl Braun ... Emeritus Director
 *Virginia Johnson - Center Manager *Ruth Wawirka-Emerita Director

Kewaunee County Research Center
 219 Steele St * Algoma, WI. 54201
 Noon-4:00 p. m.
 Thursday & Friday
 Other days by appointment
 (920) 487-2516

Kewaunee County Museum
 Courthouse Square * Kewaunee, WI. 54216
 Noon-4:00p. m. Daily
 Off-season by appointment
 (920) 388-7176 or 388-0117

Visit our facilities

Address Service Requested

Kewaunee County Historical Society
 Jerry Abitz, Editor
 N9307 Abitz Lane
 Luxemburg, WI. 54217-9628
 gabitz@centrytel.net

